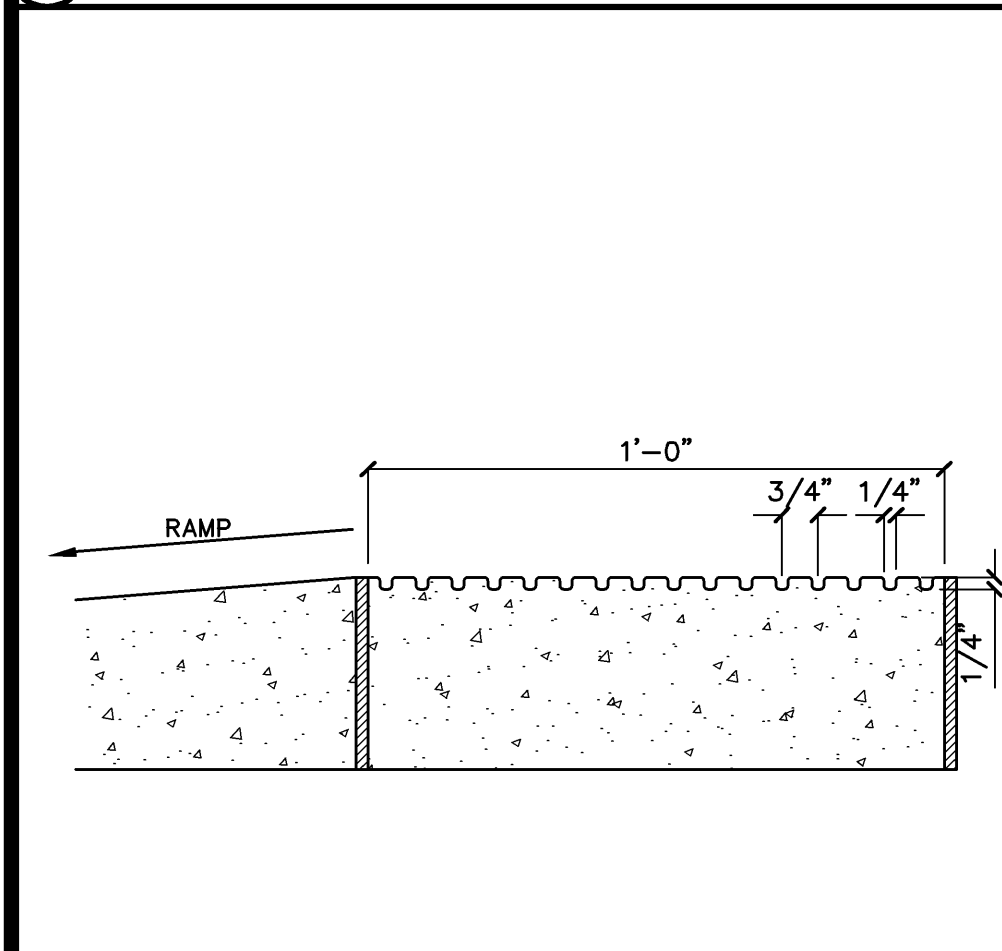
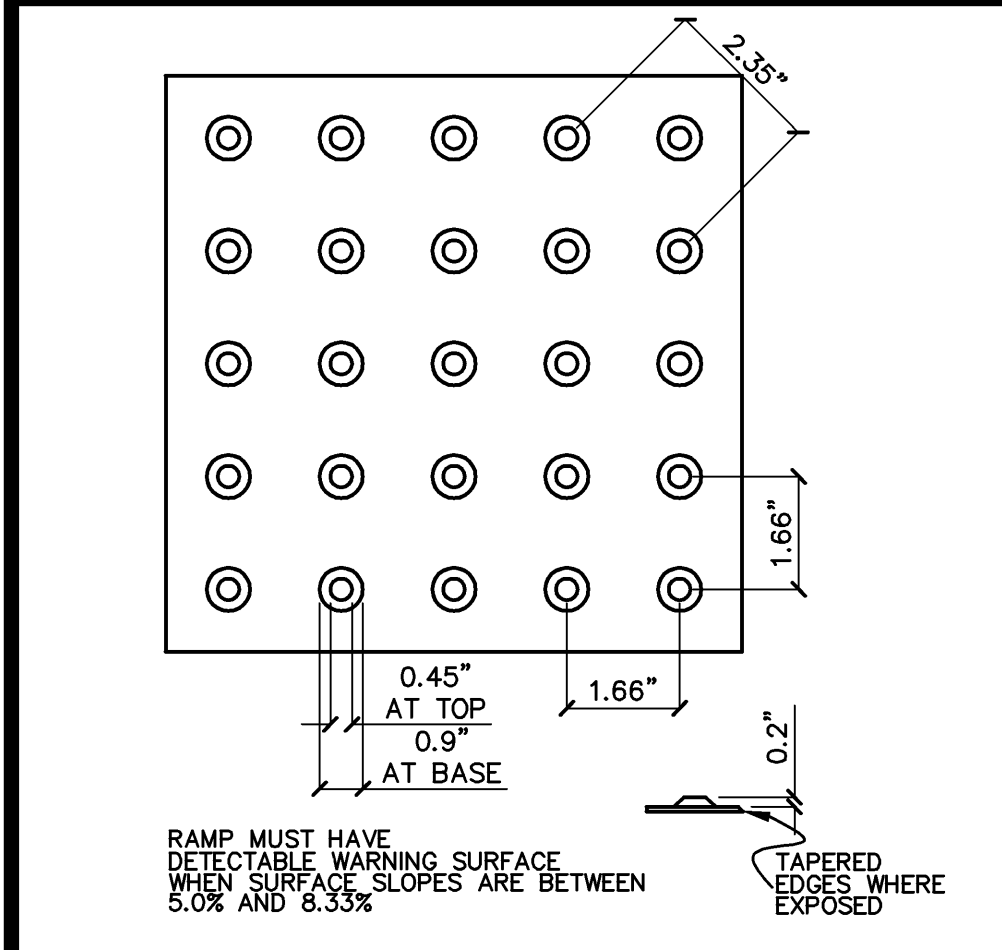


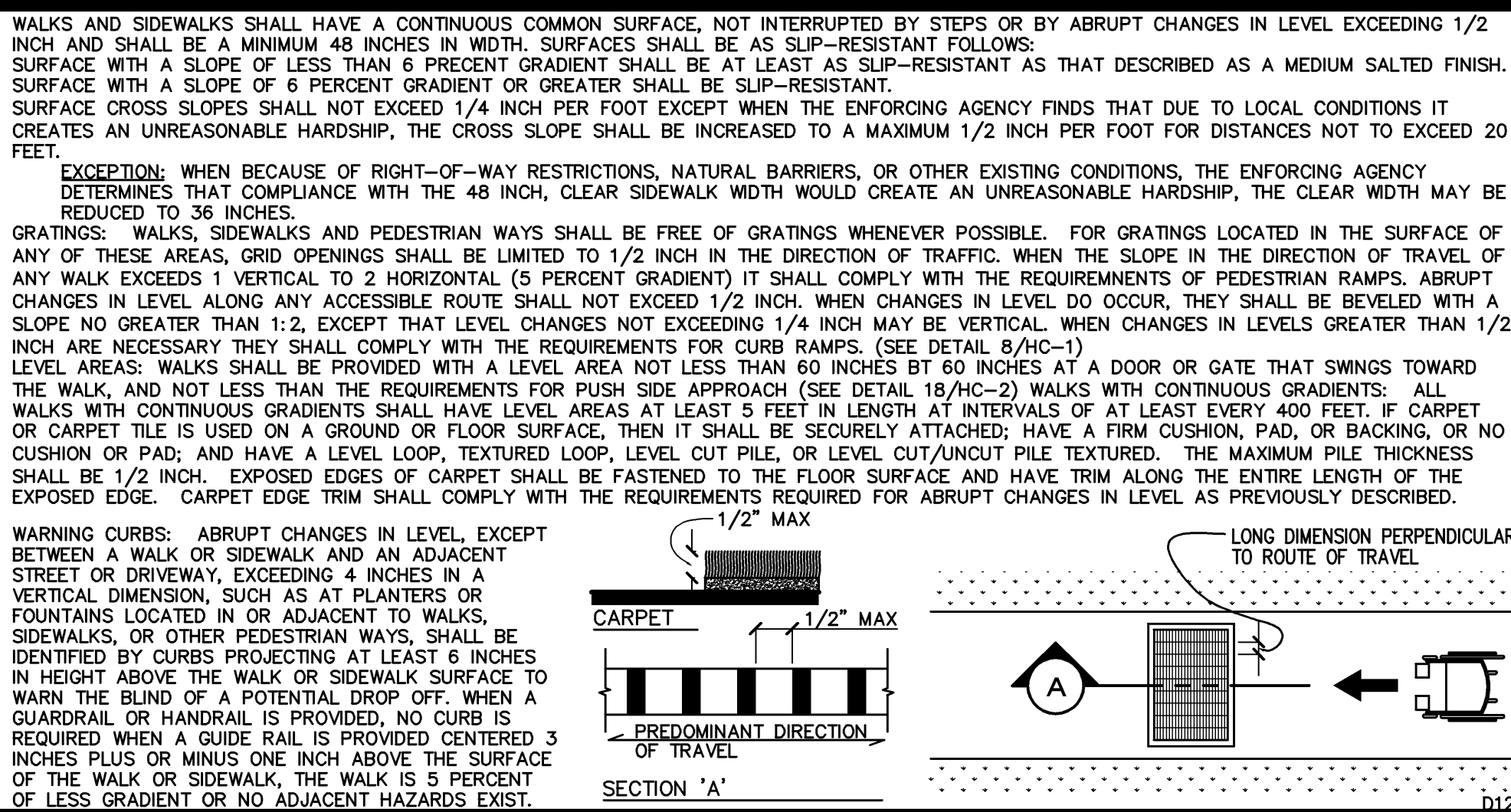
13) TOILET GRAB BAR REQUIREMENTS



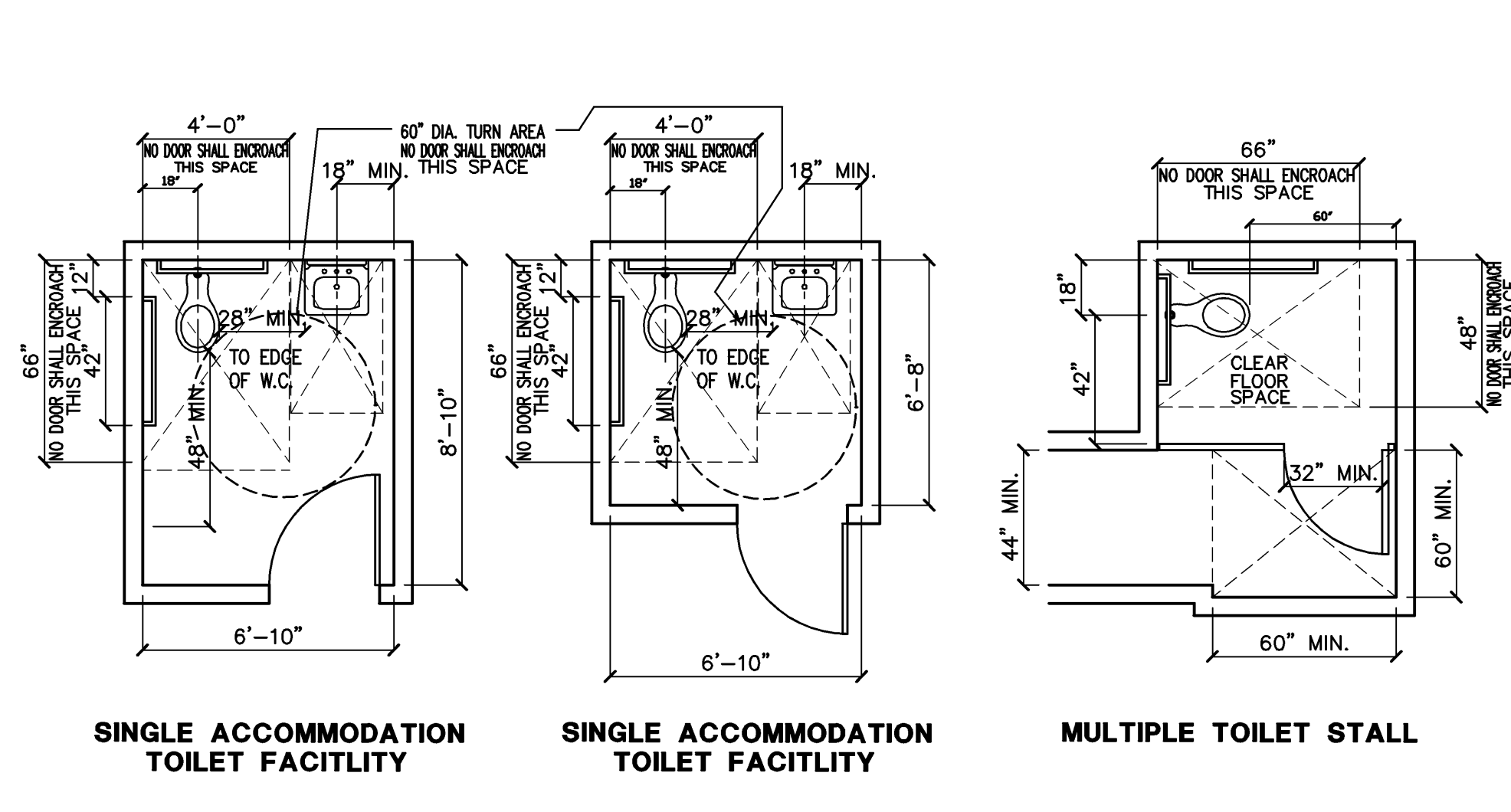
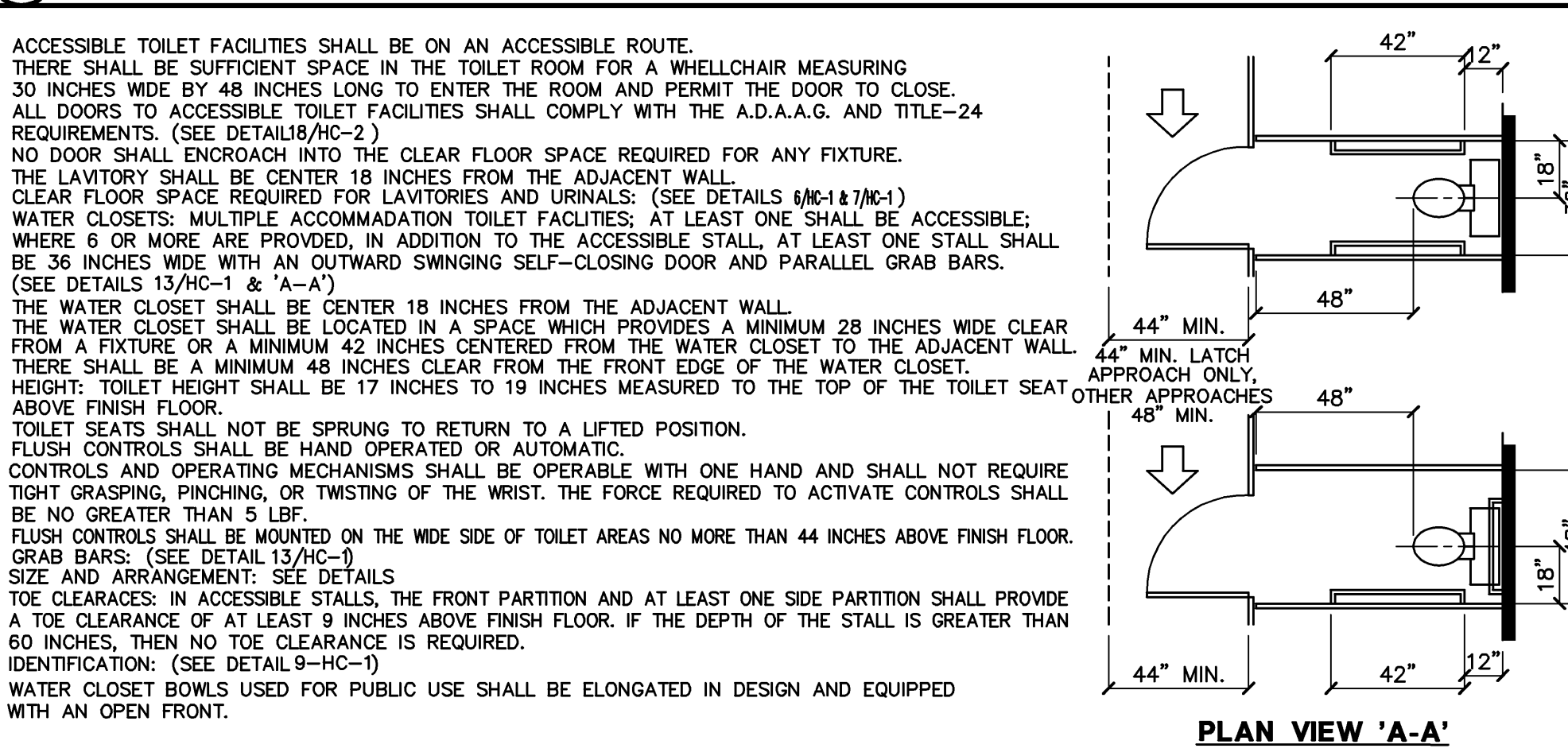
14) GROOVED BORDER



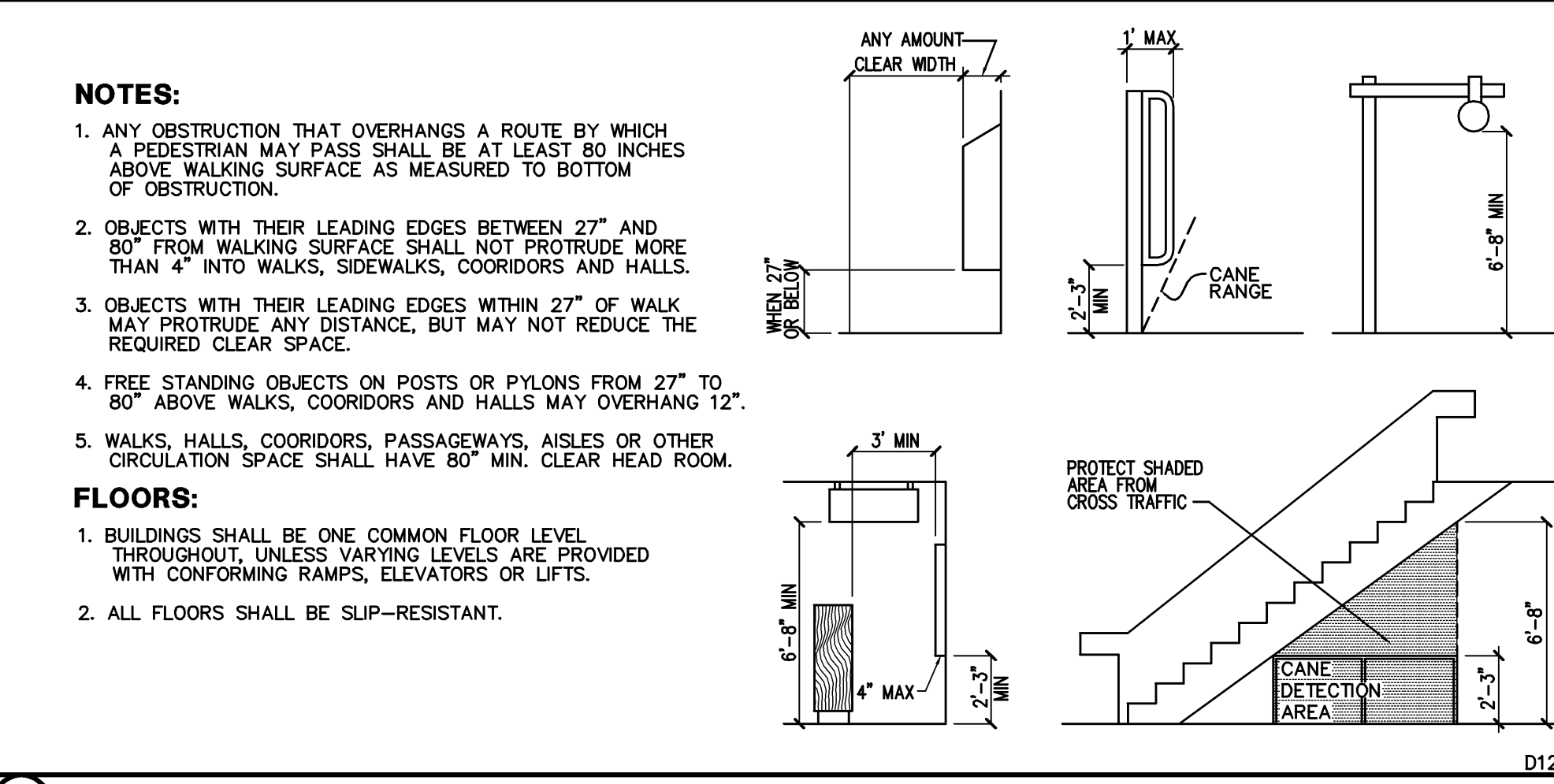
15) TRUNCATED DOMES



16) GROUND AND FLOOR SURFACE

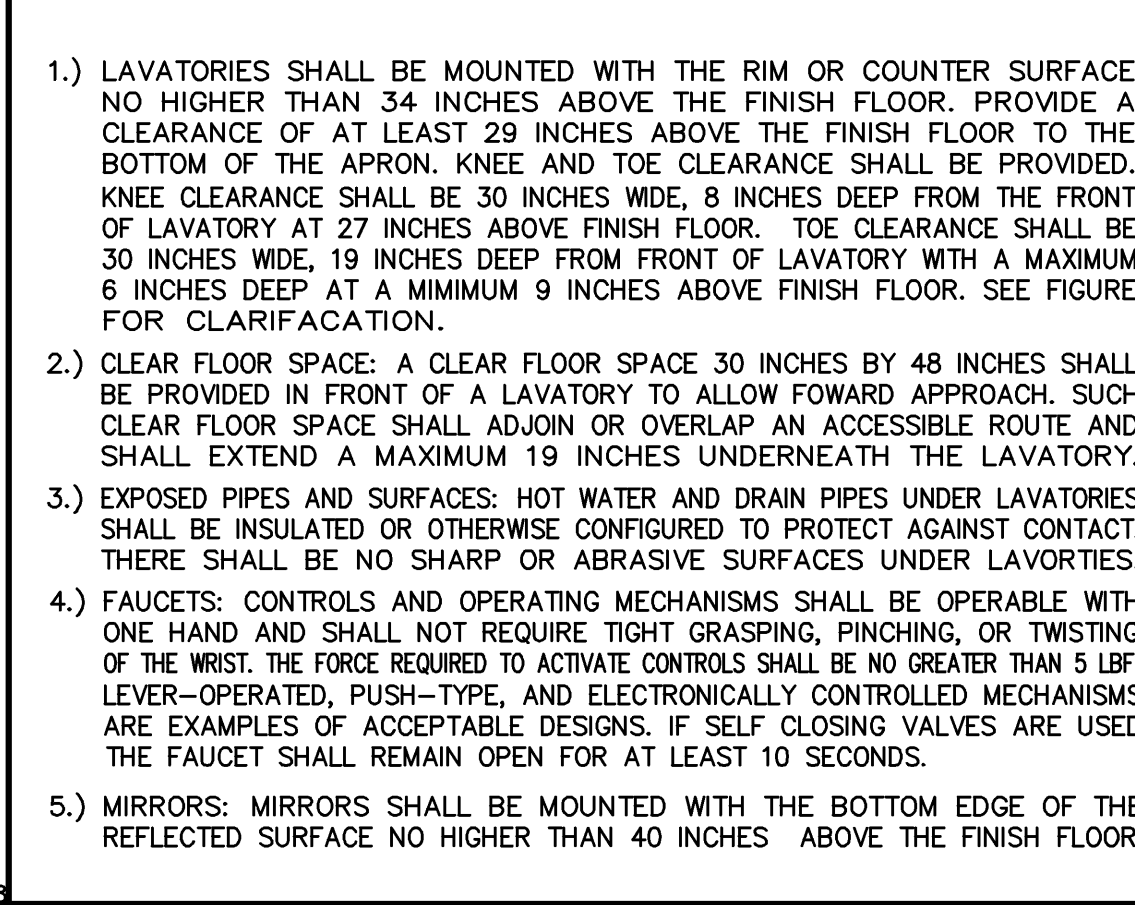


17) ACCESSIBLE TOILET FACILITIES REQUIREMENTS

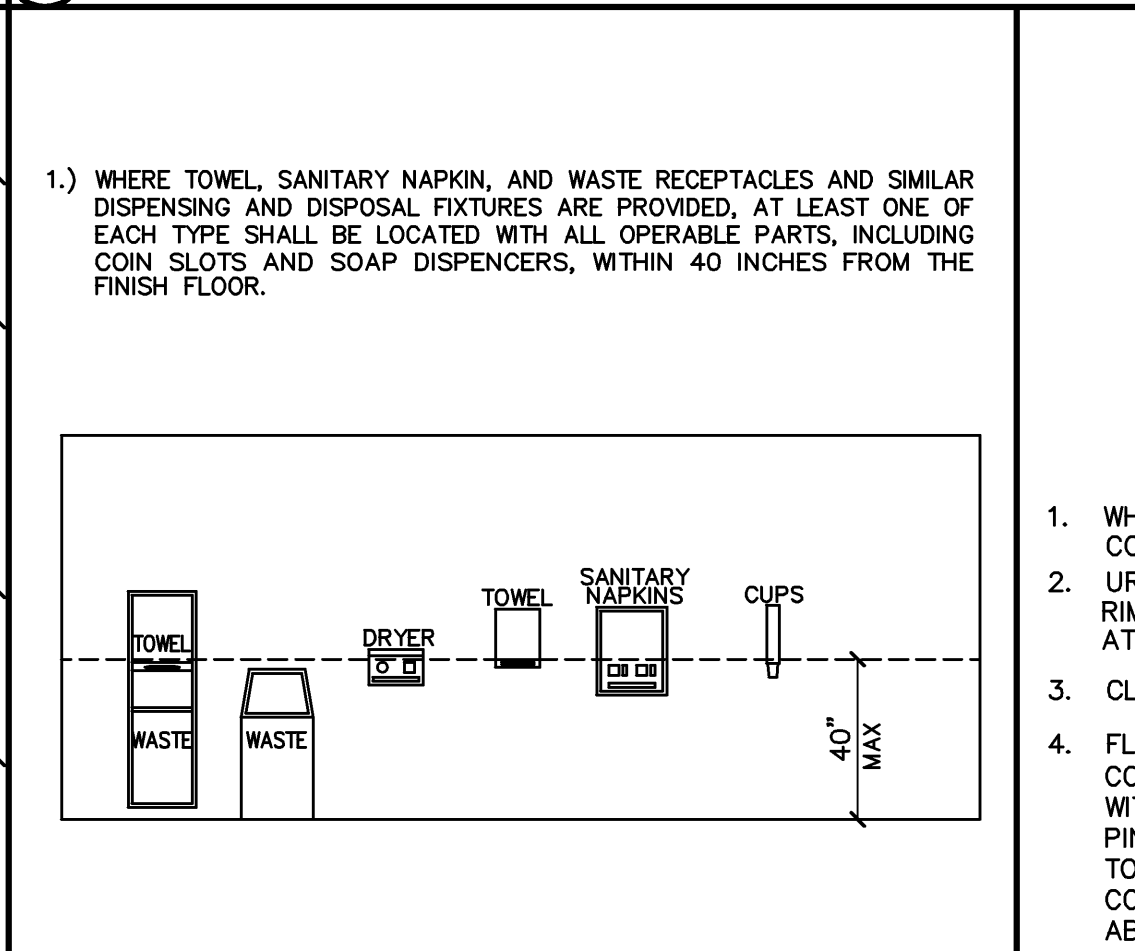


18) HAZARDS / PROTRUDING OBJECTS / HEAD ROOM

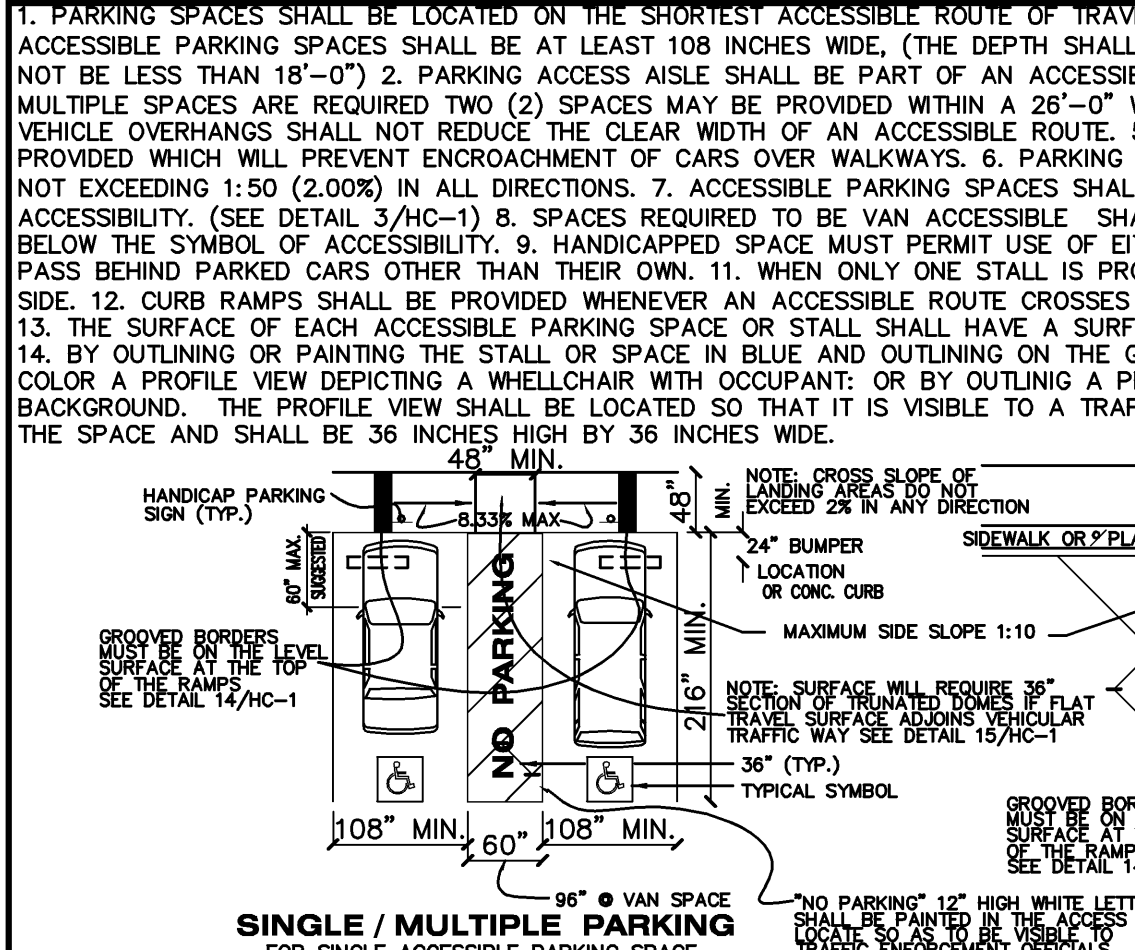
19) LAVATORIES AND MIRRORS



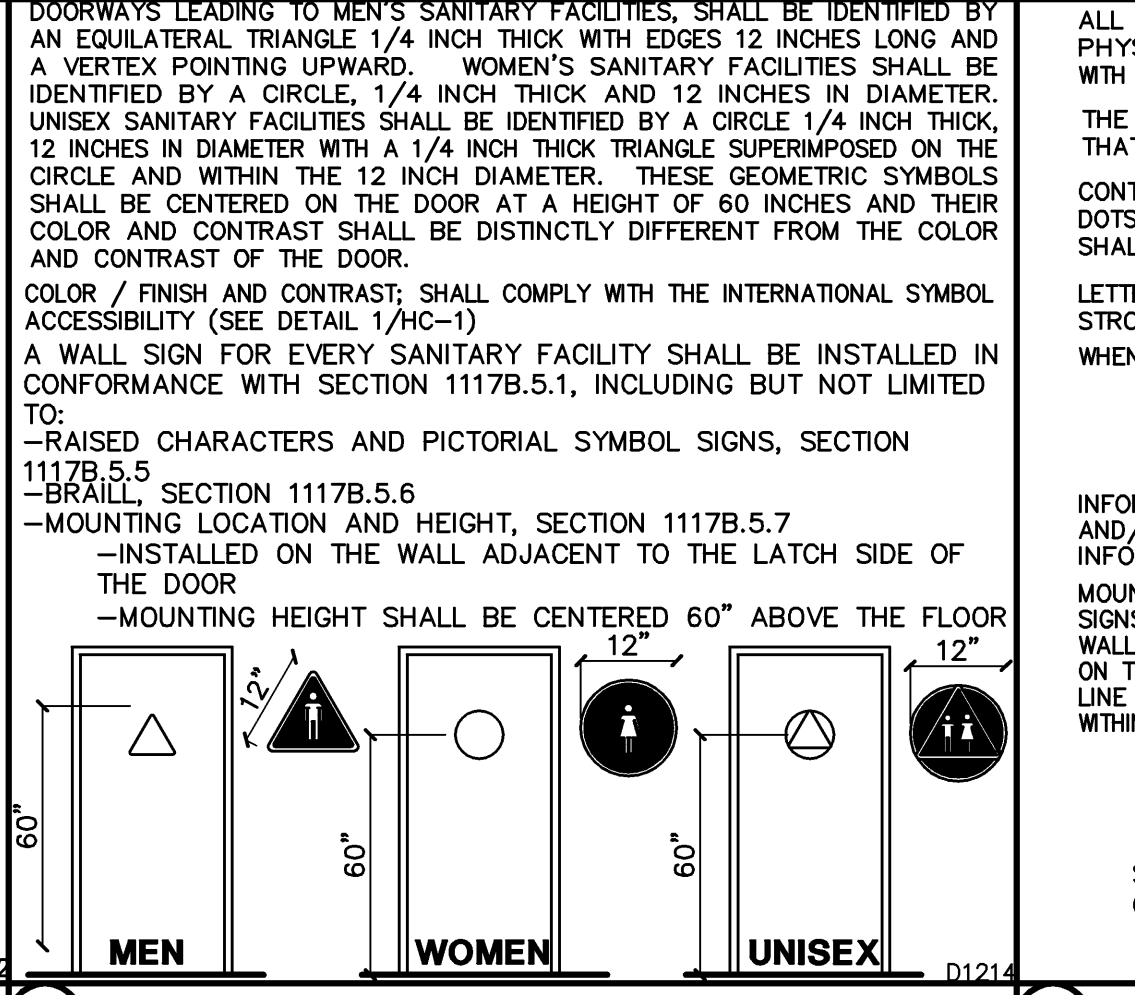
20) LAVATORIES AND MIRRORS



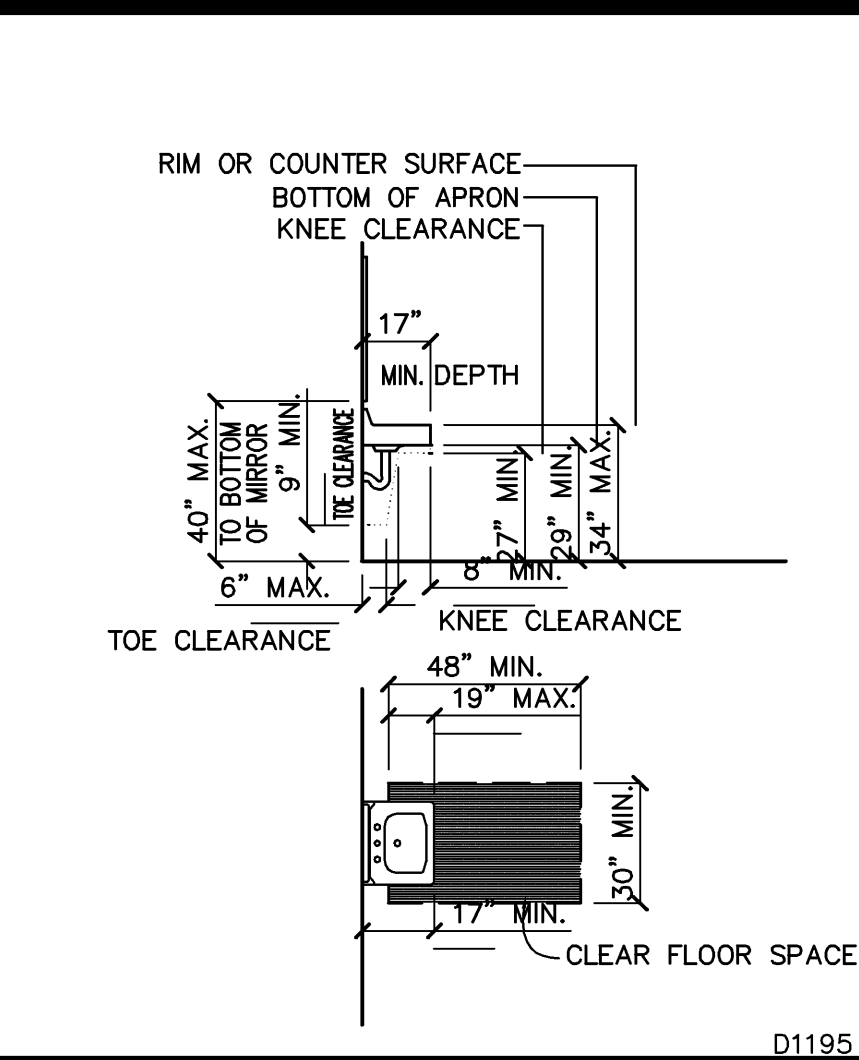
21) TOILET ROOM ACCESSORIES



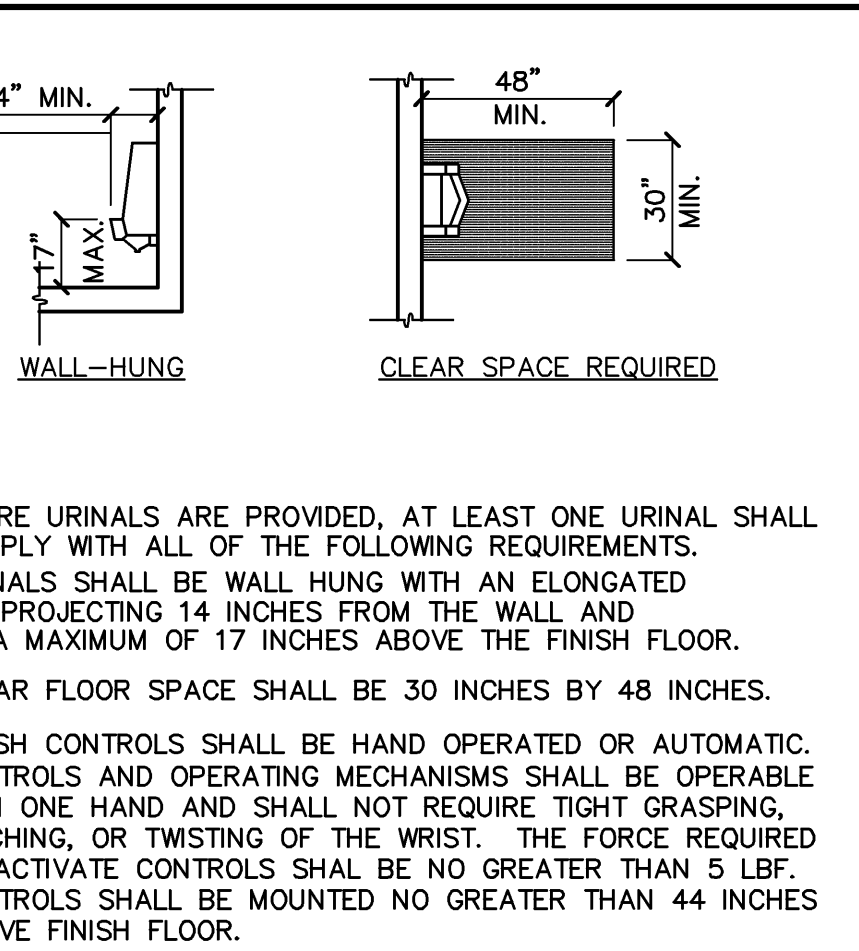
22) ACCESSIBLE PARKING STALL/SPACE REQUIREMENTS



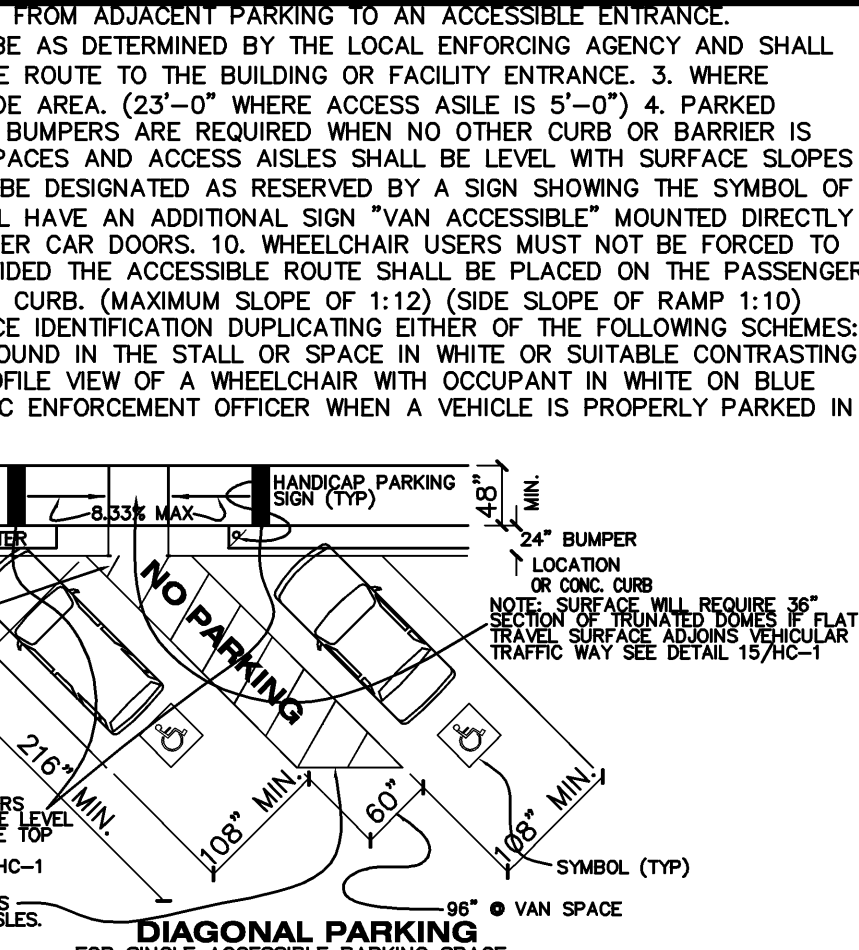
23) ACCESSIBLE TOILET FACILITY SIGNAGE



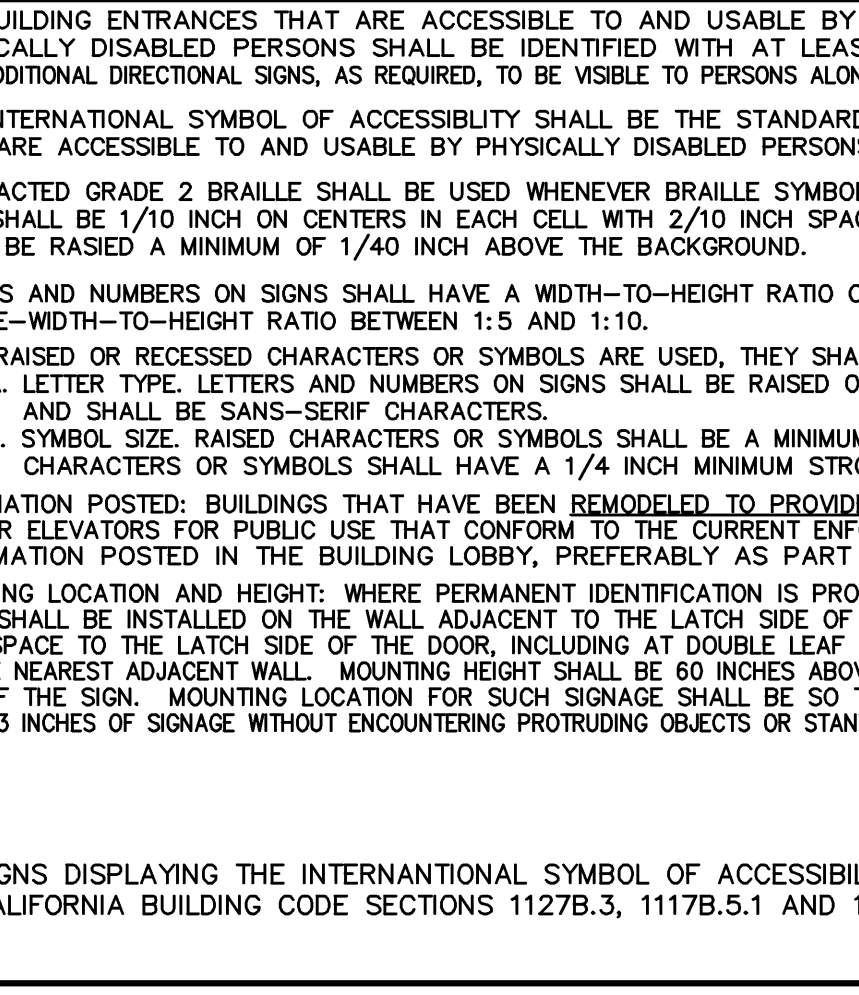
24) INTERNATIONAL SYMBOL OF ACCESSIBILITY



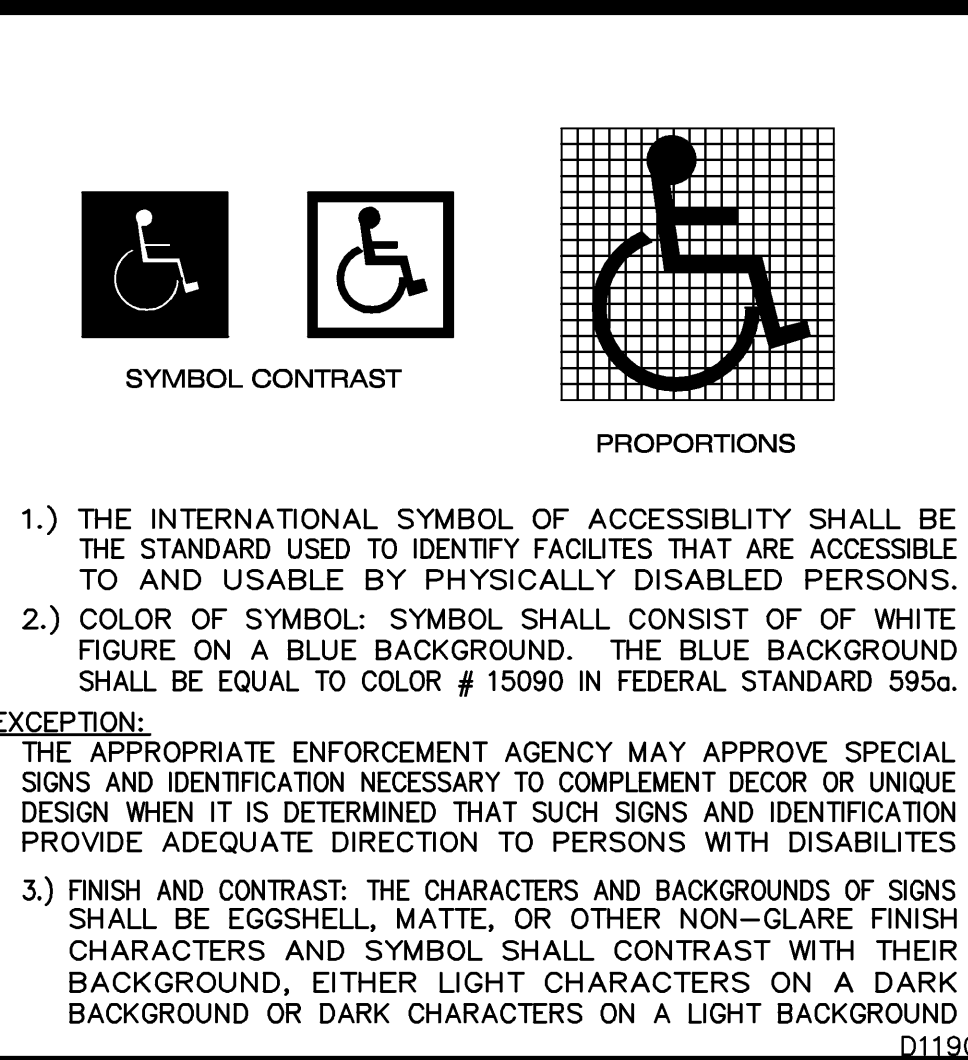
25) TRAFFIC ENTRY WARNING SIGN



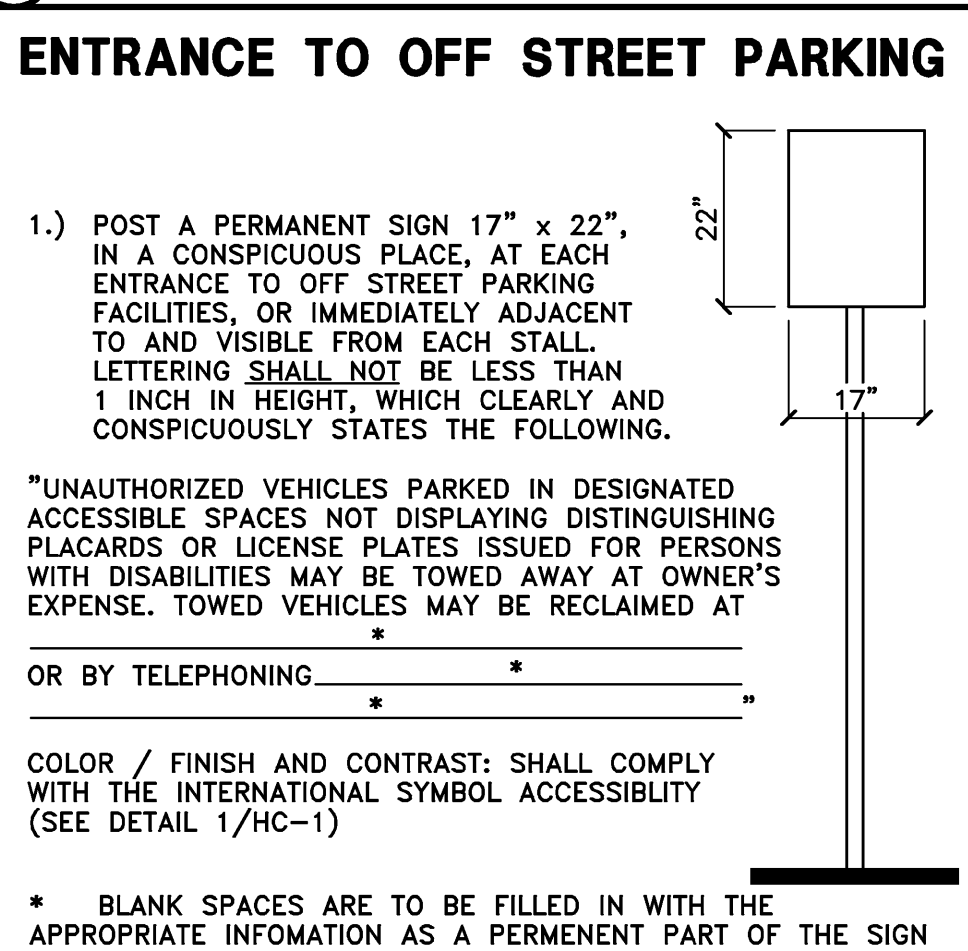
26) ACCESSIBLE PARKING STALL SIGN



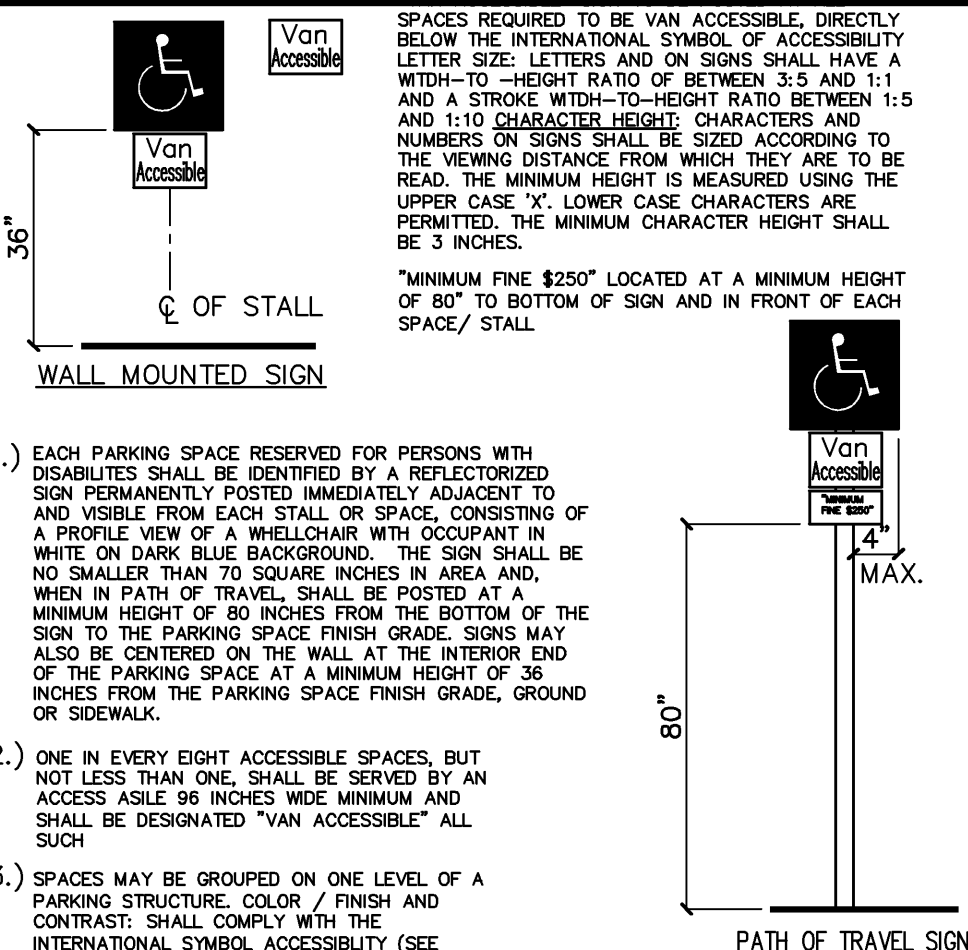
27) ENTRANCE SIGNS AND DIRECTIONAL SIGNS



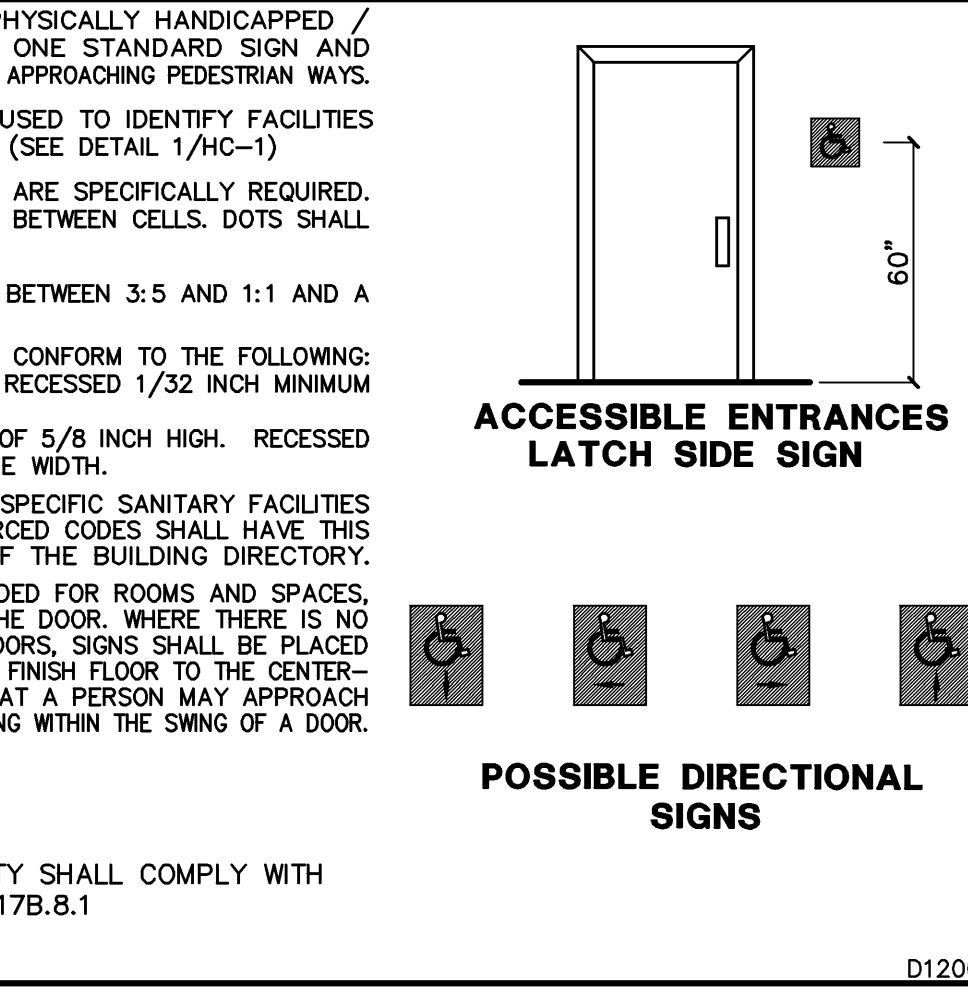
28) ENTRANCE SIGNS AND DIRECTIONAL SIGNS



29) ACCESSIBLE ENTRANCES



30) ACCESSIBLE ENTRANCES



31) ACCESSIBLE ENTRANCES

PASQUINI
ENGINEERING
INCORPORATED

903 H Street Suite 300
Bakersfield, CA 93304

Telephone: (805) 328-6600
Fax: (805) 328-9000

NO.	DATE

EXP. 12/31/10

SHEET

HC-1

PRINTED 11/17/2010