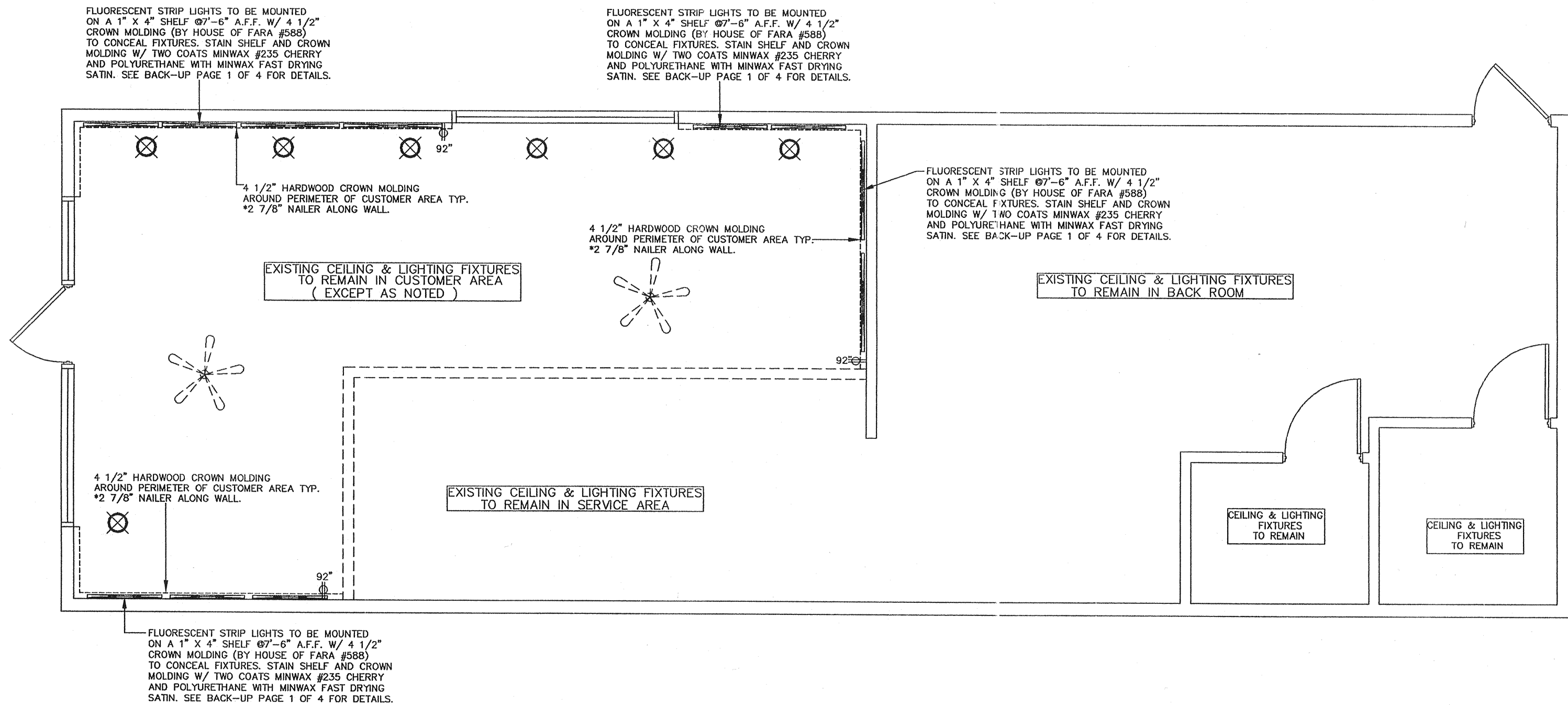


WALL FINISH PLAN



CEILING & LIGHTING PLAN

CEILING & LIGHTING LEGEND

EXISTING 2' X 2' DROP CEILING TO REMAIN. PAINT SPLINES WHITE.
OPTIONAL PAINTED CEILING TILE AND SPLINE COLORS (SPLINES MUST BE PAINTED THE SAME COLOR AS TILES):
BLONDE PAINT (SHERWIN WILLIAMS #SW 6128) *CUSTOMER AREA ONLY*
WHEAT GRASS PAINT (SHERWIN WILLIAMS #SW 6408) *CUSTOMER AREA ONLY*

SYMBOL	DESCRIPTION	MANUF.	SUPPLY	ORDERED FROM	NO.	NOTES:
	AMBER PENDANT LIGHT (LARGE)	TRUE TO FORM	SPECIALTY LIGHTING	DAI	7	LARGE SUSPENDED PENDANT FIXTURE (SW/AST/10-PL). USES (1) 15W FLUO. LAMP (MAXLITE MLST15EA). PENDANT LIGHTS ARE PLACED AROUND THE PERIMETER OF THE RESTAURANT AND SHOULD BE INSTALLED AT A HEIGHT OF 6'-6" (198.1cm) FROM THE FLOOR TO THE BOTTOM OF THE FIXTURE. (A PENDANT STEM KIT IS AVAILABLE THROUGH SPECIALTY STORE LIGHTING FOR USE WITH HIGH CEILING). *RECOMMEND INSTALLING CUSTOMER SEATING BEFORE PENDANT LIGHTS TO ALLOW FOR PRECISE PLACEMENT OF FIXTURES OVER TABLE TOPS.
	CEILING FAN	QUORUM	SPECIALTY LIGHTING GROUP	DAI	2	CD-445 WITH 5 CHERRY FINISH BLADES. CAN BE INSTALLED AS DROP STYLE (WITH 6" OR 2" STEM) OR HUGGER (FLUSH) STYLE.
	4' FLUORESCENT STRIP LIGHT	NORA LIGHTING	SPECIALTY LIGHTING GROUP	DAI	4	MODEL # NUS-28 (1) F20T5 BULB. UP TO 0 NULS FIXTURES MAY BE CONNECTED TOGETHER ON A SINGLE 120V POWER CORD FEED. MOUNT ON 4" SHELF 8'-6" A.F.F. & FINISH W/ 4 1/2" CROWN MOLDING TO CONCEAL FIXTURES. REFER TO BACK-UP PAGE 1 OF 4.
	3' FLUORESCENT STRIP LIGHT	NORA LIGHTING	SPECIALTY LIGHTING GROUP	DAI	7	MODEL # NUS-21 (1) F20T5 BULB. UP TO 0 NULS FIXTURES MAY BE CONNECTED TOGETHER ON A SINGLE 120V POWER CORD FEED. MOUNT ON 4" SHELF 8'-6" A.F.F. & FINISH W/ 4 1/2" CROWN MOLDING TO CONCEAL FIXTURES. REFER TO BACK-UP PAGE 1 OF 4.

TUSCANY II DECOR CALCULATIONS

NOTE: THE SUBWAY STORE DESIGN DEPARTMENT WILL NOT ACCEPT RESPONSIBILITY FOR ANY INACCURACIES. THE CALCULATIONS PROVIDED BELOW MUST BE VERIFIED BY THE G.C. AND FRANCHISE OWNER BEFORE ANY ORDER FOR THESE MATERIALS IS ACCEPTED AND PLACED.

QUANTITIES	CALCULATION WORKSHEET
CUSTOMER AREA	
1) (14) YARDS CITYSCAPE MURAL	1) M/TS + S/M + 10% DIVIDED BY 3.
2) (18) YARDS OF TUSCAN STUCCO WALL COVERING	2) M/TS + T/S + R/TS 10% DIVIDED BY 3
3) (42) FEET OF UPPER DECORATIVE MOLDING	3) M/TS + S/M + 10%
4) (54) FEET OF LOWER CHAIR RAIL MOLDING	4) M/TS + T/S + R/TS 10%
5) () YARDS OF QUENTIN WALLCOVERING (NON-TEDLAR) (OR OPTIONAL BUTTERNUT BRICK WALLCOVERING)	5) (CEILING HEIGHT - 7'-6") X (M/TS + S/M + (Q/WC OR B/T IN CUSTOMER AREA ONLY)) + 5% DIVIDED BY 12
6) (54) (OPTIONAL) FEET OF HARDWOOD CROWN MOLDING (AT CORNER WHERE WALL AND CEILING MEET)	6) M/TS + S/M + R/TS (+ W/TS IF WINDOWS NOT TO CEILING) + 10%.
7) (48) FEET OF HARDWOOD CROWN MOLDING (FINISH CAP ON STRIP LIGHTING SHELF)	7) TOTAL LENGTH OF WALLS WHERE FLUORESCENT STRIP LIGHTING TO BE INSTALLED + 10%
8) (6) YARDS OF RED WALL COVERING	8) HEIGHT FROM TOP OF TUSCAN STUCCO WALL COVERING (36" A.F.F.) X R/TS + 5% DIVIDED BY 12
9) (N/A) YARDS OF QUENTIN WALLCOVERING (WITH TEDLAR COATING) (FOR 48" HIGH BANQUETTE WALL ONLY)	9) Q/WC + 10% DIVIDED BY 3. (CUSTOMER AREA ONLY)
SERVICE AREA	
10) (N/A) 4' X 12' SHEETS FONT-HILL PEAR LAMINATE	10) FP/L + 5% DIVIDED BY 12
11) (N/A) 12' T-MOLDING STRIPS	11) (FP/L ON 36" HIGH WALLS X 2) + (FP/L ON 48" HIGH WALLS X 3) + 5% DIVIDED BY 12
12) (N/A) YARDS OF BUTTERNUT BRICK TEXTURED WALL COVERING	12) CEILING HEIGHT X B/T + 5% DIVIDED BY 12
13) (N/A) YARDS OF QUENTIN WALL COVERING (WITH TEDLAR COATING)	13) CEILING HEIGHT X Q/WC + 5% DIVIDED BY 12
14) (1) RIGHT (1) LEFT VEGETABLE MOSAIC TILE	
15) (N/A) (OPTIONAL) FEET OF COPPER CORNICE TRIM	
16) (1) 4' X 12' SHEETS FONT-HILL PEAR LAMINATE (OPTIONAL: FOR SOFFIT APPLICATION)	15) TOTAL LENGTH OF CUSTOMER SIDE OF HEADERWALL(S) OVER SERVICE AREA + 5%.

* CALCULATIONS ARE FOR FONT-HILL PEAR LAMINATE AND ALUMINUM T-MOLDING APPLIED TO 36" AND 48" HIGH WALLS. LAMINATE AND T-MOLDING, WHEN AFFIXED DIRECTLY TO DUKE FRONT COUNTER, IS SHIPPED READY TO INSTALL BY DUKE MANUFACTURING.

NOTE: THESE CALCULATIONS DO NOT INCLUDE THE MATERIALS NEEDED TO DECOR THE AREA ABOVE OR BELOW THE WINDOWS.

WALL FINISH LEGEND (TUSCANY II DECOR)

*SEE TUSCANY II BACK-UP SHEET 1 OF 4 AND 2 OF 4 FOR PROPER INSTALLATION OF WALLFINISHES IN CUSTOMER AND SERVICE AREAS.
(SEE TUSCANY SUPPLEMENTAL TILE BACK-UP SHEET WHEN APPLICABLE)

SYMBOL	DESCRIPTION	MANUFACTURER	SUPPLY	INST.	NOTES:
	SUBWAY MURAL	SUNGLO FABRICS	D.A.I.	G.C.	VINYL WALLCOVERING (UPPER CHAIR RAIL MOLDING AND QUENTIN OR BUTTERNUT BRICK WALLCOVERING AS REQUIRED)
	TUSCAN STUCCO WALLCOVERING	SUNGLO FABRICS	D.A.I.	G.C.	VINYL WALLCOVERING (WITH LOWER CHAIR RAIL MOLDING)
	WINDOW FRAME		G.C.	G.C.	PAINT SHERWIN WILLIAMS #SW6356 COPPER MOUNTAIN. (CITYSCAPE MURAL, UPPER CHAIR RAIL MOLDING AND QUENTIN OR BUTTERNUT BRICK WALLCOVERING AS REQUIRED)
	TUSCAN STUCCO WALLCOVERING	SUNGLO FABRICS	D.A.I.	G.C.	VINYL WALLCOVERING (WITH LOWER CHAIR RAIL MOLDING AS REQUIRED)
	RED WALL COVERING	SUNGLO FABRICS	D.A.I.	G.C.	VINYL WALLCOVERING
	TUSCAN STUCCO WALLCOVERING	SUNGLO FABRICS	D.A.I.	G.C.	VINYL WALLCOVERING (WITH LOWER CHAIR RAIL MOLDING)
	CABINET/WALL LAMINATE	WILSONART	G.C.	G.C.	FONT-HILL PEAR (#10745-60) - INSTALL GRAIN HORIZONTALLY
	WALL CAPS		G.C.	G.C.	HARDWOOD PLANK (STAINED MINWAX #235 CHERRY AND POLYURETHANED WITH MINWAX FAST DRYING CLEAR SATIN)
	MOSAIC TILE (RIGHT)	IMAGINE TILE	D.A.I.	G.C.	4 1/4" X 4 1/4" CERAMIC TILE. VEGETABLE GRAPHIC TILES FRAMED BY 1A (LIGHT CHERRY). SEE TUSCANY II SUPPLEMENTAL TILE BACK-UP SHEET FOR INSTALLATION.
	MOSAIC TILE (LEFT)	IMAGINE TILE	D.A.I.	G.C.	4 1/4" X 4 1/4" CERAMIC TILE. VEGETABLE GRAPHIC TILES FRAMED BY 1A (LIGHT CHERRY). SEE TUSCANY II SUPPLEMENTAL TILE BACK-UP SHEET FOR INSTALLATION.
	CERAMIC TILE	IMAGINE TILE	G.C.	G.C.	4 1/4" X 4 1/4" CERAMIC TILE. COLOR: 1A (LIGHT CHERRY). SEE TUSCANY II SUPPLEMENTAL TILE BACK-UP SHEET FOR INSTALLATION.

NOTE: ALL WOOD INTERIOR DOORS, UPPER & LOWER MOLDING & CROWN MOLDING TO BE STAINED W/ MINWAX #235 CHERRY AND POLYURETHANED W/ MINWAX FAST DRYING CLEAR SATIN.

NOTE: PREFINISHED AND PREFRAMED COUNTER ENTRANCE IS AVAILABLE THROUGH MARLITE OR GLUE 2 PIECES OF 5/8" PARTICLE BOARD TOGETHER. SEE BACK-UP SHEET #1 FOR FINISH OPTIONS.

REVISION:	BY	DATE

STORE MUST BE CONSTRUCTED AS DESIGNED IN THESE FLOOR PLANS SUBJECT TO FEDERAL, STATE AND LOCAL LAWS. RECIPIENT IS RESPONSIBLE FOR ENSURING COMPLIANCE WITH ALL LAWS. IF MODIFICATIONS ARE NECESSARY, PLEASE CONTACT THE FWH STORE DESIGN DEPARTMENT FOR WRITTEN APPROVAL OF THE REQUIRED CHANGES.

THIS DRAWING IS FURNISHED BY FWH ON BEHALF OF DOCTORS ASSOCIATES INC. (DAI) (DAI) SUBWAY. RECIPIENT MUST DETERMINE IF THIS DRAWING MUST BE SUBMITTED TO A LICENSED ARCHITECT OR SIMILAR PROFESSIONAL UNDER FEDERAL, STATE OR LOCAL LAW. ANY CHANGES MUST BE APPROVED BY DAI.

DO NOT SCALE DRAWING. WRITTEN DIMENSIONS TAKE PRECEDENCE OVER SCALED DIMENSIONS. AND SHALL BE VERIFIED IN THE FIELD BY THE GENERAL CONTRACTOR AND/OR FRANCHISE/OWNER. ANY DISCREPANCY IN DIMENSIONS SHALL BE BROUGHT TO THE IMMEDIATE ATTENTION OF DAI'S AREA DEVELOPMENT AGENT OR DESIGNATED FIELD REPRESENTATIVE.

THE GENERAL CONTRACTOR AND EACH SUB-CONTRACTOR SHALL MAKE HIS OWN INSPECTIONS AND MEASUREMENTS. FWH AND DAI SHALL NOT BE HELD RESPONSIBLE FOR THE ACCURACY OF DIMENSIONS AND FOR ERRORS AND OMISSIONS IN THE DRAWINGS IF WRITTEN CONFIRMATION HAD NOT BEEN RECEIVED BY THE FWH STORE DESIGN DEPARTMENT.

SUBWAY
WORLD HEADQUARTERS
325 BIC DRIVE
MILFORD, CT 06461
(203) 877-4281
(800) 888-4848

LOCATION:
STORE # 3681
50 TOWN CENTER PKWY
SANTEE, CA

FRANCHISEE:
MARWAHA
DEVELOPMENT AGENT:
MARWAHA

DATE:
JULY 14, 2010
DESIGNED BY:
DAVE MILLER
DRAWN BY:
D.G.M.
REVIEWED BY:

SCALE: 1/4" = 1'-0"

SHEET #:

T1 TO T2 REMODEL

GENERAL NOTES:

- CEILING HEIGHT IS 9'
- ELECTRICAL OUTLET HEIGHTS MEASURED TO BOTTOM OF BOX.
- ONE ELECTRICAL JUNCTION BOX TO BE LOCATED IN CEILING ABOVE EACH WINDOW.
- SMARTCURVE STAND (MFR. DISPLAY-BOX) REQUIRED IN CUSTOMER AREA AT POINT OF ORDER (PREFERRED PLACEMENT). 21 3/4" X 13 1/8" BASE, 58" (WITHOUT HEADER) OVERALL HEIGHT.
- SECONDARY CHIP RACK IS REQUIRED IN THE CUSTOMER AREA. THE TWO AVAILABLE OPTIONS ARE: BASKET STYLE CHIP RACK AT THE POINT OF ORDER (PREFERRED PLACEMENT) OR PURSE RAIL MOUNTED CHIP RACK. (MOUNTED ON TOP OF THE PURSE RAIL.)
- EXIT LIGHTS INSTALLED BY G.C. PER LOCAL CODE.
- EMERGENCY LIGHTS INSTALLED BY G.C. PER LOCAL CODE.
- EXTINGUISHERS, SMOKE AND FIRE DETECTION SYSTEMS INSTALLED BY G.C. PER LOCAL CODE.
- LABOR & MATERIAL SUPPLIED BY G.C. UNLESS OTHERWISE NOTED.
- ALL DIMENSIONS TO BE VERIFIED BY G.C. ON SITE.
- DECOR SPECIFICATIONS ARE TO BE SUBWAY'S "TUSCANY II" SCHEME.
- EXISTING FLOOR FINISH TO REMAIN.

PRINTED 7/13/2012