

1 WALL FINISH PLAN
SCALE 1/4"=1'-0"

CEILING & LIGHTING LEGEND

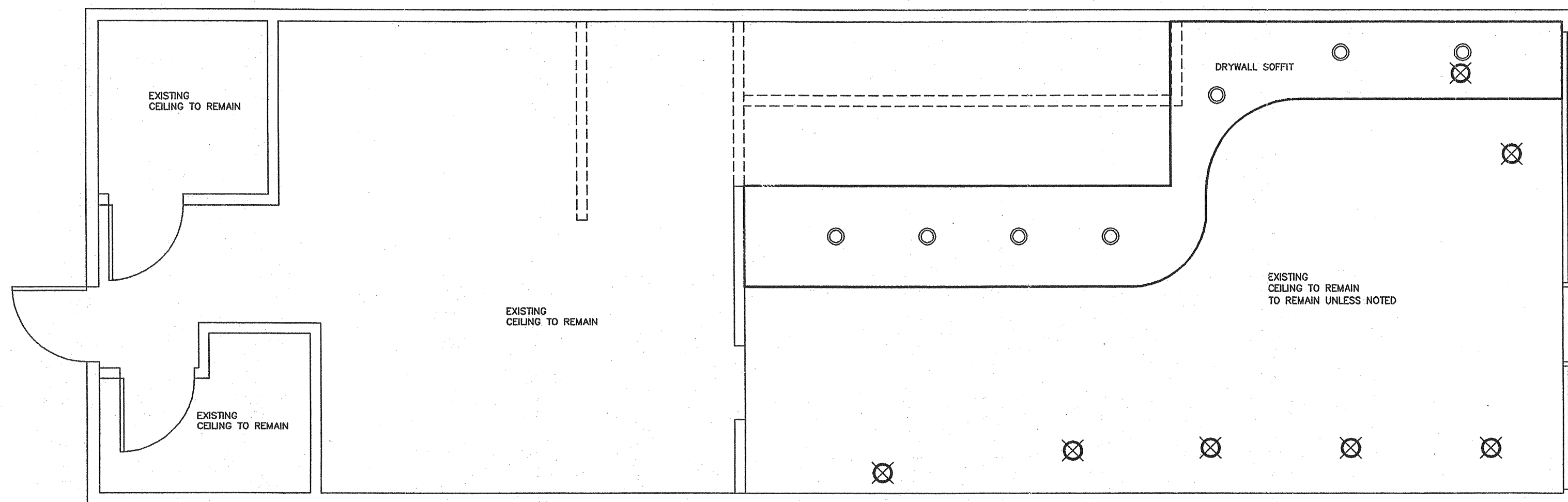
EXISTING 2' X 2' DROP CEILING WITH WHITE SPLINES.

OPTIONAL PAINTED CEILING TILE AND SPLINE COLORS (SPLINES MUST BE PAINTED THE SAME COLOR AS TILES):

BLONDE PAINT (SHERWIN WILLIAMS #SW 6128) *CUSTOMER AREA ONLY*

WHEAT GRASS PAINT (SHERWIN WILLIAMS #SW 6408) *CUSTOMER AREA ONLY*

SYMBOL	DESCRIPTION	MANUF.	SUPPLY	ORDERED FROM	NO.	NOTES
	DOWNLIGHT (SERVICE AREA)	LIGHTOLIER	SPECIALTY STORE LIGHTING	DAI	7	RECESSED FIXTURE (1102P1/1146). USES (1) 45WPAR BULB
	AMBER PENDANT LIGHT (LARGE)	TRUE TO FORM	SPECIALTY STORE LIGHTING	DAI	7	LARGE SUSPENDED PENDANT FIXTURE (SW/AST/10-PL). USES (1) 15W FLUO. LAMP (MAXLITE ML515EA). PENDANT LIGHTS ARE PLACED AROUND THE PERIMETER OF THE RESTAURANT AND SHOULD BE INSTALLED AT A HEIGHT OF 6'-6" (198.1cm) FROM THE FLOOR TO THE BOTTOM OF THE FIXTURE. (A 'PENDANT STEM KIT' IS AVAILABLE THROUGH SPECIALTY STORE LIGHTING FOR USE WITH HIGH CEILING). *RECOMMEND INSTALLING CUSTOMER SEATING BEFORE PENDANT LIGHTS TO ALLOW FOR PRECISE PLACEMENT OF FIXTURES OVER TABLE TOPS.



2 CEILING PLAN
SCALE 1/4"=1'-0"

WALL FINISH LEGEND (TUSCANY II DECOR)

*SEE TUSCANY II BACK-UP SHEET 1 OF 4 AND 2 OF 4 FOR PROPER INSTALLATION OF WALLFINISHES IN CUSTOMER AND SERVICE AREAS. (SEE TUSCANY SUPPLEMENTAL TILE BACK-UP SHEET WHEN APPLICABLE)

SYMBOL	DESCRIPTION	MANUFACTURER	SUPPLY	INST.	NOTES
	SUBWAY MURAL	SUNGLO FABRICS	D.A.I.	G.C.	VINYL WALLCOVERING (UPPER CHAIR RAIL MOLDING AND QUENTIN OR BUTTERNUT BRICK WALLCOVERING AS REQUIRED)
	TUSCAN STUCCO WALLCOVERING	SUNGLO FABRICS	D.A.I.	G.C.	VINYL WALLCOVERING (WITH LOWER CHAIR RAIL MOLDING)
	WINDOW FRAME		G.C.	G.C.	PAINT SHERWIN WILLIAMS #SW6356 COPPER MOUNTAIN. (CITYSCAPE MURAL UPPER CHAIR RAIL MOLDING AND QUENTIN OR BUTTERNUT BRICK WALLCOVERING AS REQUIRED)
	TUSCAN STUCCO WALLCOVERING	SUNGLO FABRICS	D.A.I.	G.C.	VINYL WALLCOVERING (WITH LOWER CHAIR RAIL MOLDING AS REQUIRED)
	RED WALL COVERING	SUNGLO FABRICS	D.A.I.	G.C.	VINYL WALLCOVERING
	TUSCAN STUCCO WALLCOVERING	SUNGLO FABRICS	D.A.I.	G.C.	VINYL WALLCOVERING (WITH LOWER CHAIR RAIL MOLDING)
	CABINET/WALL LAMINATE	WILSONART	G.C.	G.C.	FONT-HILL PEAR (#10745-60) - INSTALL GRAIN HORIZONTALLY
	MOSAIC TILE (RIGHT)	VACUFORM/WILSONART	D.A.I.	G.C.	GRAPHIC IMAGES (SEE TUSCANY II BACK-UP SHEET FOR DETAILS AND OPTIONS) WITH WILSONART #10745-60 FONT-HILL PEAR BORDER AND 4" LIGHTED PURSE RAIL
	MOSAIC TILE (LEFT)	VACUFORM/WILSONART	D.A.I.	G.C.	GRAPHIC IMAGES (SEE TUSCANY II BACK-UP SHEET FOR DETAILS AND OPTIONS) WITH WILSONART #10745-60 FONT-HILL PEAR BORDER AND 4" LIGHTED PURSE RAIL
	WALL CAPS		G.C.	G.C.	HARDWOOD PLANK (STAINED MINWAX #235 CHERRY AND POLYURETHANED WITH MINWAX FAST DRYING CLEAR SATIN)
	GRIMALDI CERAMIC TILE RESTROOM/SERVICE AREAS	ASSOCIATED AG/INTERNATIONAL LTD.	G.C.	G.C.	8" X 8" CERAMIC TILE. COLOR: CURRY (YELLOW). ITEM# C212005061. 8" X 8" CERAMIC TILE. COLOR: MUSGO (GREEN). ITEM# C212005051. GROUT COLOR: #17 BUTTER CREAM NON SANDED.

NOTE: ALL WOOD INTERIOR DOORS, UPPER & LOWER MOLDING & CROWN MOLDING TO BE STAINED W/ MINWAX #235 CHERRY AND POLYURETHANED W/ MINWAX FAST DRYING CLEAR SATIN.

TUSCANY II DECOR CALCULATIONS

NOTE: THE SUBWAY STORE DESIGN DEPARTMENT WILL NOT ACCEPT RESPONSIBILITY FOR ANY INACCURACIES. THE CALCULATIONS PROVIDED BELOW MUST BE VERIFIED BY THE G.C. AND FRANCHISE OWNER BEFORE ANY ORDER FOR THESE MATERIALS IS ACCEPTED AND PLACED.

QUANTITIES	CALCULATION WORKSHEET
CUSTOMER AREA	
1) (16) YARDS CITYSCAPE MURAL	1) M/TS + S/M + 10% DIVIDED BY 3.
2) (22) YARDS OF TUSCAN STUCCO WALL COVERING	2) M/TS + T/S + R/TS 10% DIVIDED BY 3
3) (48) FEET OF UPPER DECORATIVE MOLDING	3) M/TS + S/M + 10%
4) (66) FEET OF LOWER CHAIR RAIL MOLDING	4) M/TS + T/S + R/TS 10%
5) (10) YARDS OF QUENTIN WALLCOVERING (NON-TEDLAR) (OR OPTIONAL BUTTERNUT BRICK WALLCOVERING)	5) (CEILING HEIGHT - 7'-6") X (M/TS + S/M + (Q/WC OR B/T IN CUSTOMER AREA ONLY)) + 5% DIVIDED BY 12
6) (-) ABOVE CITYSCAPE MURAL (OPTIONAL) FEET OF HARDWOOD CROWN MOLDING (AT CORNER WHERE WALL AND CEILING MEET)	6) M/TS + S/M + R/TS (+ W/TS IF WINDOWS NOT TO CEILING) + 10%
7) (-) FEET OF HARDWOOD CROWN MOLDING (FINISH CAP ON STRIP LIGHTING SHELF)	7) TOTAL LENGTH OF WALLS WHERE FLUORESCENT STRIP LIGHTING TO BE INSTALLED + 10%
8) (10) YARDS OF RED WALL COVERING	8) HEIGHT FROM TOP OF TUSCAN STUCCO WALL COVERING TO CEILING (36" A.F.F.) X R/TS + 5% DIVIDED BY 12
9) (-) YARDS OF QUENTIN WALLCOVERING (WITH TEDLAR COATING) (FOR 48" HIGH BANQUETTE WALL ONLY)	9) Q/WC + 10% DIVIDED BY 3. (CUSTOMER AREA ONLY)
SERVICE AREA	
10) (3) 4' X 12' SHEETS FONT-HILL PEAR LAMINATE*	10) FP/L + 5% DIVIDED BY 12
11) (5) 12" T-MOLDING STRIPS *	11) (FP/L ON 36" HIGH WALLS X 2) + (FP/L ON 48" HIGH WALLS X 3) + 5% DIVIDED BY 12
12) (-) YARDS OF BUTTERNUT BRICK TEXTURED WALL COVERING	12) CEILING HEIGHT X B/T + 5% DIVIDED BY 12
13) (-) YARDS OF QUENTIN WALL COVERING (WITH TEDLAR COATING)	13) CEILING HEIGHT X Q/WC + 5% DIVIDED BY 12
14) (1) RIGHT (1) LEFT VEGETABLE MOSAIC TILE	
15) (-) (OPTIONAL) FEET OF COPPER CORNICE TRIM	
16) (8) 4' X 12' SHEETS FONT-HILL PEAR LAMINATE (OPTIONAL FOR SOFFIT APPLICATION)	15) TOTAL LENGTH OF CUSTOMER SIDE OF HEADERWALL(S) OVER SERVICE AREA + 5%.

* CALCULATIONS ARE FOR FONT-HILL PEAR LAMINATE AND ALUMINUM T-MOLDING APPLIED TO 36" AND 48" HIGH WALLS. LAMINATE AND T-MOLDING, WHEN AFFIXED DIRECTLY TO DUKE FRONT COUNTER, IS SHIPPED READY TO INSTALL BY DUKE MANUFACTURING.

NOTE: THESE CALCULATIONS DO NOT INCLUDE THE MATERIALS NEEDED TO DECOR THE AREA ABOVE OR BELOW THE WINDOWS.

REMODEL

GENERAL NOTES:

- CEILING HEIGHT IS 10'.
- ELECTRICAL OUTLET HEIGHTS MEASURED TO BOTTOM OF BOX.
- ONE ELECTRICAL JUNCTION BOX TO BE LOCATED IN CEILING ABOVE EACH WINDOW.
- STORE DESIGNED WITH COLORCOURT SEATING. SHOWN ON PLAN AS SINGLES NOT GROUPS.
- CUNO MODEL SW3-PLUS WATER FILTRATION SYSTEM IS REQUIRED IN ALL NEW STORES THAT DISPENSE BEVERAGES. THE RECOMMENDED PLACEMENT FOR INSTALLATION IS MOUNTED TO SODA SYRUP RACK BY COCA-COLA. SECONDARY PLACEMENT OPTION IS MOUNTED ON THE BACKROOM WALL. THIRD INSTALLATION OPTION IS MOUNTING INSIDE THE FRONT BEVERAGE COUNTER WHEN SPACE LIMITATIONS OCCUR. REQUIRED: 1/2" INCOMING WATER LINE FEED WITH 1/2" BALL VALVE SHUTOFF AND 1/2" FPT CONNECTION.
- MINIMUM 110 VOLT, 20 AMP ELECTRICAL SERVICE TO SUPPORT THE CARBONATOR AND WATER BOOSTER (MUST BE DEDICATED CIRCUIT).
- SMARTCURVE STAND (MFR. DISPLAY-BOX) REQUIRED IN CUSTOMER AREA AT POINT OF ORDER (PREFERRED PLACEMENT).
- 21 3/4" X 13 1/8" BASE, 56" (WITHOUT HEADER) OVERALL HEIGHT.
- SECONDARY CHIP RACK IS REQUIRED IN THE CUSTOMER AREA. THE TWO AVAILABLE OPTIONS ARE: BASKET STYLE CHIP RACK AT THE POINT OF ORDER (PREFERRED PLACEMENT) OR PURSE RAIL MOUNTED CHIP RACK. (MOUNTED ON TOP OF THE PURSE RAIL.)
- EXIT LIGHTS INSTALLED BY G.C. PER LOCAL CODE.
- EMERGENCY LIGHTS INSTALLED BY G.C. PER LOCAL CODE.
- EXTINGUISHERS, SMOKE AND FIRE DETECTION SYSTEMS INSTALLED BY G.C. PER LOCAL CODE.
- LABOR & MATERIAL SUPPLIED BY G.C. UNLESS OTHERWISE NOTED.
- DECOR SPECIFICATIONS ARE TO BE SUBWAY'S "TUSCANY II" SCHEME.
- EXISTING FLOOR FINISH TO BE UTILIZED.

REVISION:

BY

DATE

STORE MUST BE CONSTRUCTED AS DESIGNED IN THESE FLOOR PLANS SUBJECT TO FEDERAL, STATE AND LOCAL LAWS. RECIPIENT IS RESPONSIBLE FOR ENSURING COMPLIANCE WITH ALL LAWS. IF MODIFICATIONS ARE NECESSARY, PLEASE CONTACT THE FWH STORE DESIGN DEPARTMENT FOR WRITTEN APPROVAL OF THE REQUIRED CHANGES.

THIS DRAWING IS FURNISHED BY FWH ON BEHALF OF DOCTORS ASSOCIATES INC. (DAP) DBA SUBWAY. RECIPIENT MUST DETERMINE IF THIS DRAWING MUST BE SUBMITTED TO A LICENSED ARCHITECT OR SIMILAR PROFESSIONAL UNDER FEDERAL, STATE OR LOCAL LAW. ANY CHANGES MUST BE APPROVED BY DAI.

DO NOT SCALE DRAWING. WRITTEN DIMENSIONS TAKE PRECEDENCE OVER SCALED DIMENSIONS AND SHALL BE VERIFIED IN THE FIELD BY THE GENERAL CONTRACTOR AND FRANCHISEE/OWNER. ANY DISCREPANCY IN DIMENSIONS SHALL BE BROUGHT TO THE IMMEDIATE ATTENTION OF DAI'S AREA DEVELOPMENT AGENT OR DESIGNATED FIELD REPRESENTATIVE.

THE GENERAL CONTRACTOR AND EACH SUB-CONTRACTOR SHALL MAKE HIS OWN INSPECTIONS AND MEASUREMENTS. FWH AND DAI SHALL NOT BE HELD RESPONSIBLE FOR THE ACCURACY OF DIMENSIONS AND FOR ERRORS AND OMISSIONS IN THE DRAWINGS IF WRITTEN CONFIRMATION HAD NOT BEEN RECEIVED BY THE FWH STORE DESIGN DEPARTMENT.

THIS DRAWING AND THE INFORMATIONAL CONTENT HEREOF IS THE CONFIDENTIAL PROPERTY OF DAI AND IS PROVIDED SOLELY FOR THE USE OF AUTHORIZED FRANCHISEES, THEIR AGENTS AND CONTRACTORS. RECIPIENT AGREES NOT TO REPRODUCE, COPY, USE OR TRANSMIT THIS DRAWING AND/OR ITS INFORMATIONAL CONTENT, IN WHOLE OR IN PART, OR TO ALLOW SUCH ACTION BY OTHERS, FOR ANY PURPOSE, EXCEPT WITH THE WRITTEN PERMISSION OF DAI OR FWH ACTING ON BEHALF OF DAI. RECIPIENT FURTHER AGREES TO SURRENDER THIS DRAWING AND ANY PERMITTED COPIES HEREOF UPON DEMAND.

SUBWAY
WORLD HEADQUARTERS
325 BIC DRIVE
MILFORD, CT 06461
(203) 877-4281
(800) 888-4848

LOCATION:
STORE #13478
3939 CRENSHAW BLVD.
LOS ANGELES, CA

FRANCHISEE:
RAGHU, ROHIT
RAVI MARWAHA
DEVELOPMENT AGENT:
HARDI GREWAL

DATE:
JANUARY 15, 2010
DESIGNED BY:
BETH TABRIZ
DRAWN BY:
BT
REVIEWED BY:
DBF
SCALE: 1/4" = 1'-0"

SHEET #:
2 OF 2
PRINTED 1/13/2011

©2010 DOCTORS ASSOCIATES, INC.