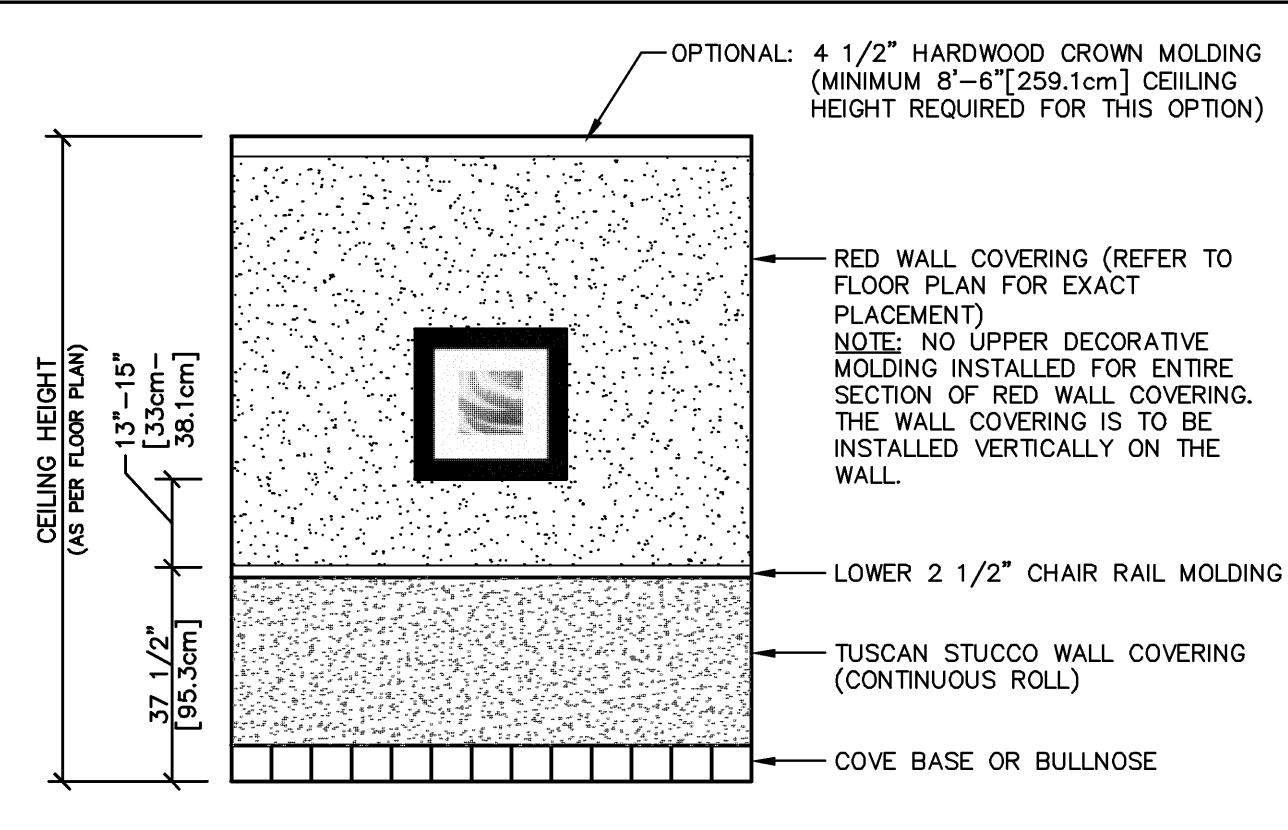


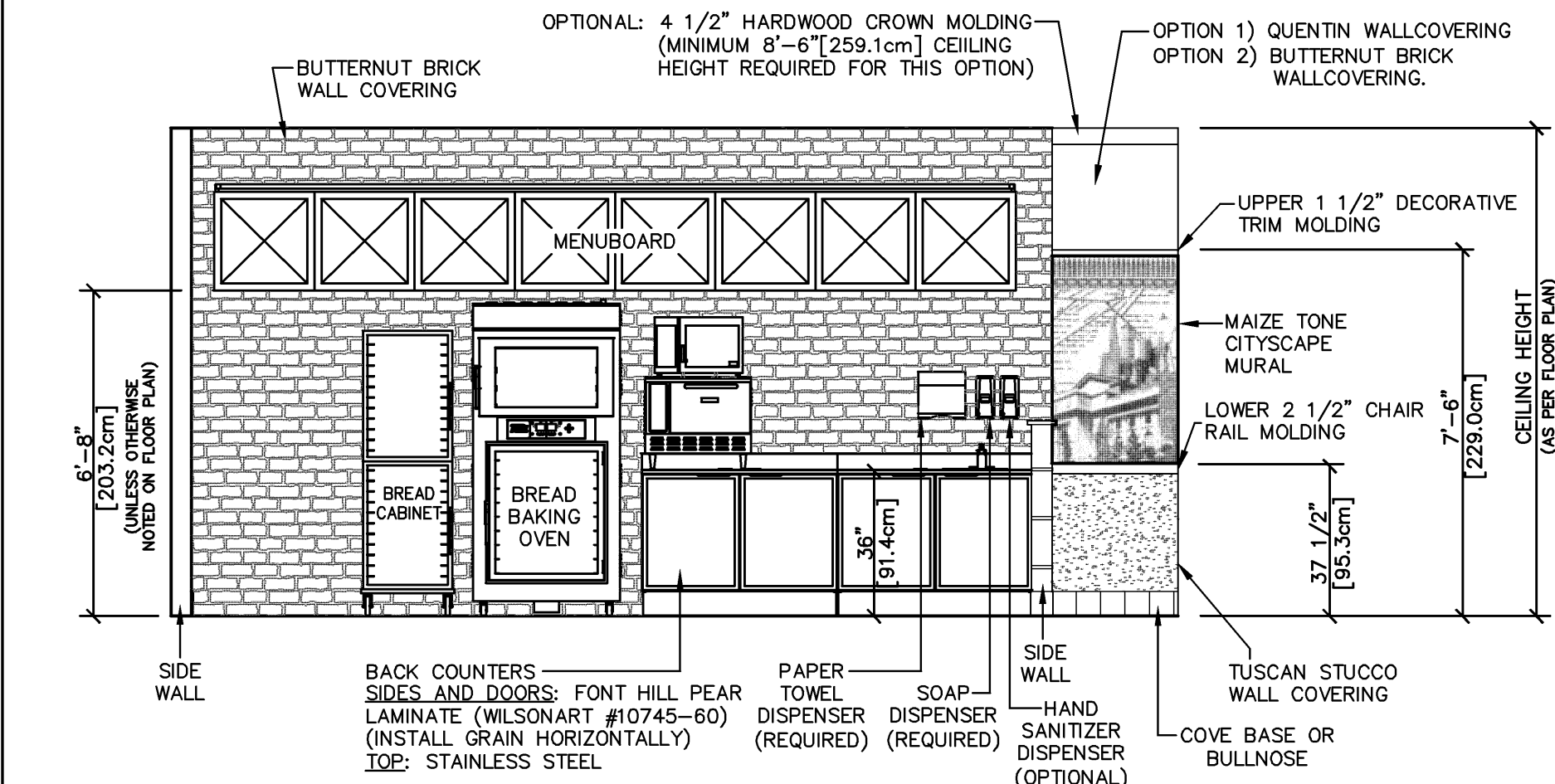
CUSTOMER AREA WALL ELEVATION (TYPICAL)

(SEE GENERAL NOTES 1, 2 & 5)



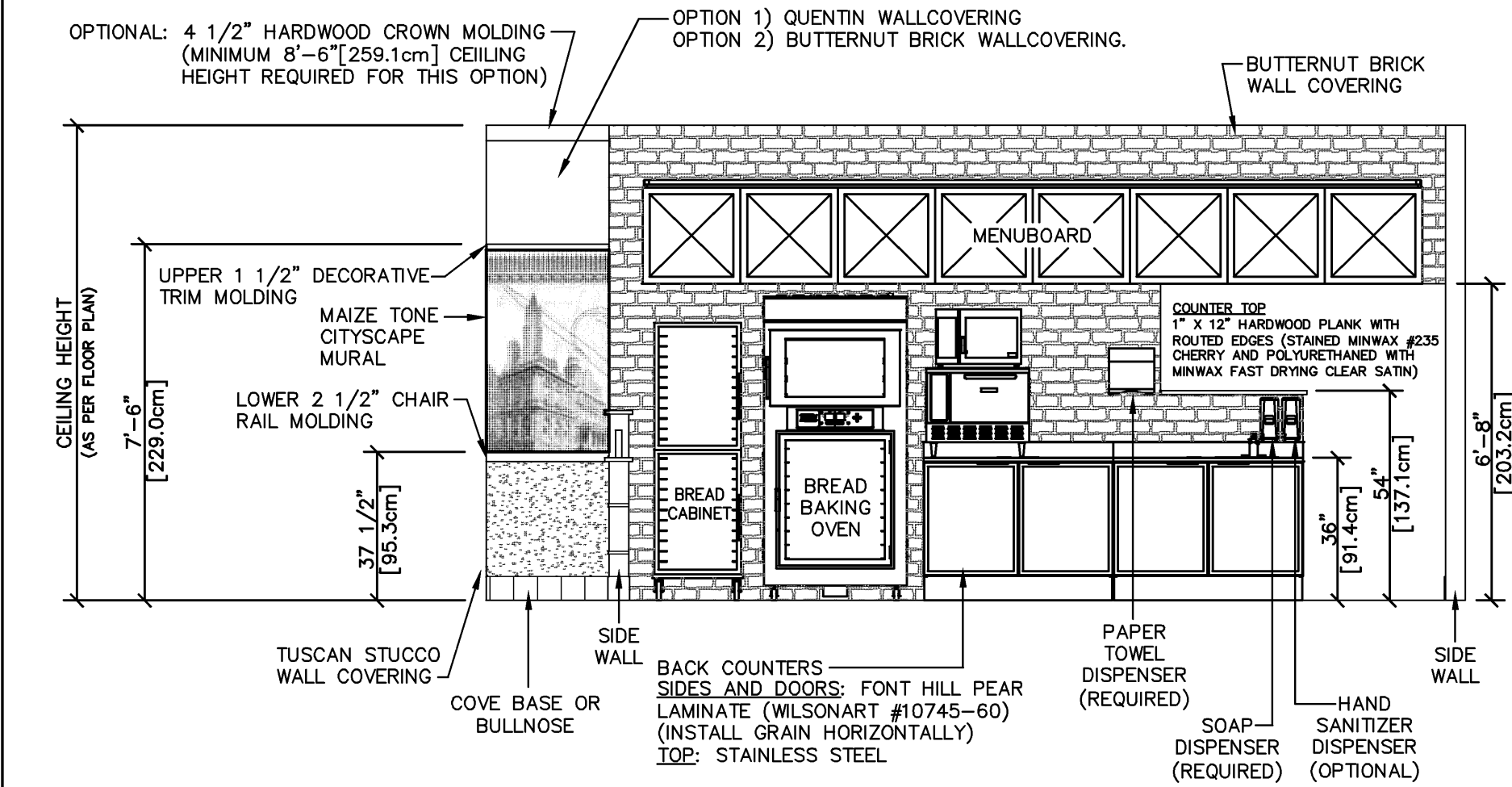
CUSTOMER AREA "RED" WALL ELEVATION (OPTIONAL)

(SEE GENERAL NOTES 1, 2 & 5)



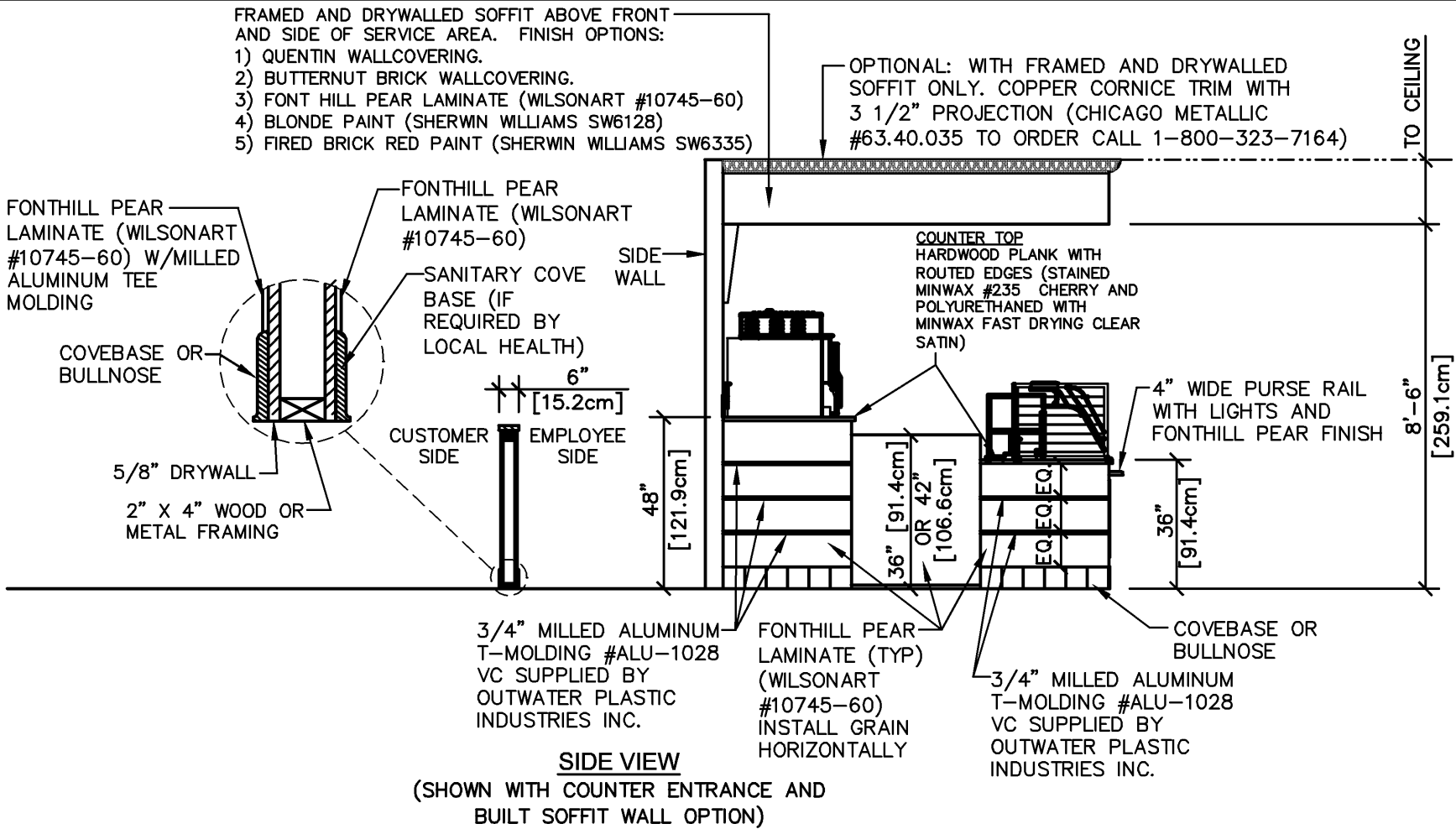
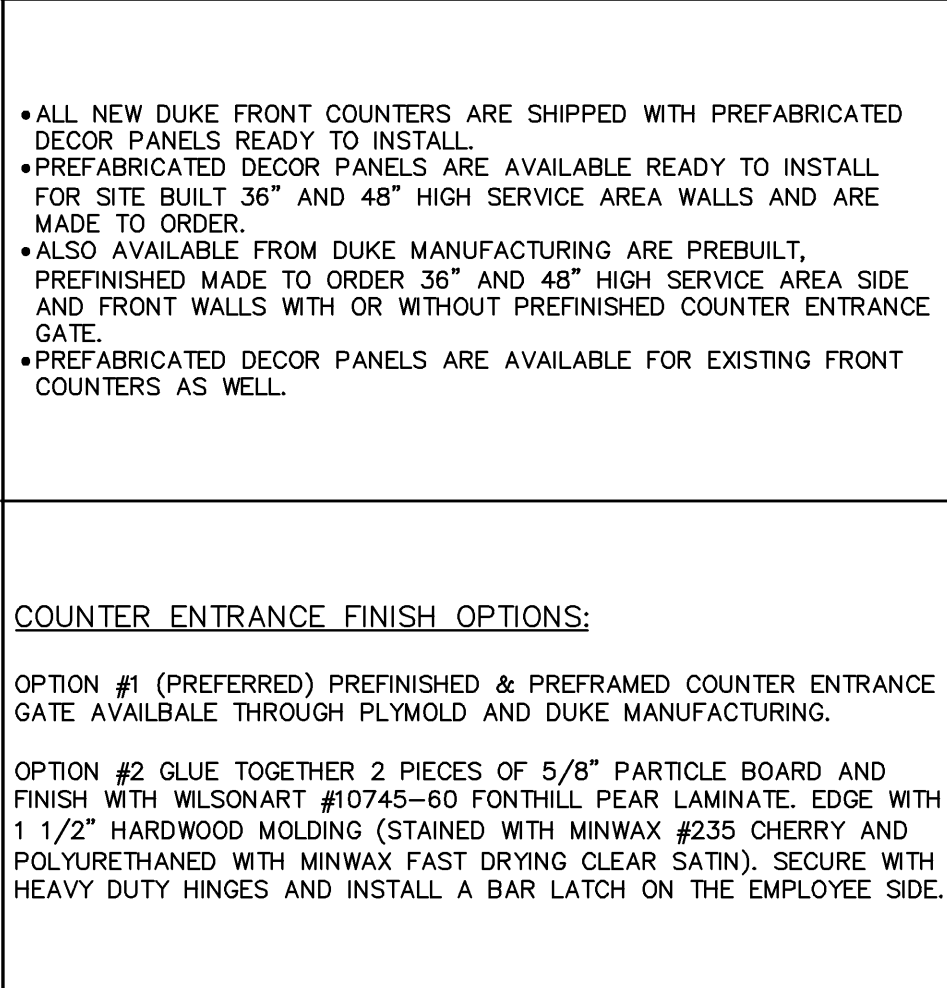
SERVICE AREA - SIDE FACING ELEVATION (TYPICAL)

(SEE GENERAL NOTES 1, 2, 3 & 5)



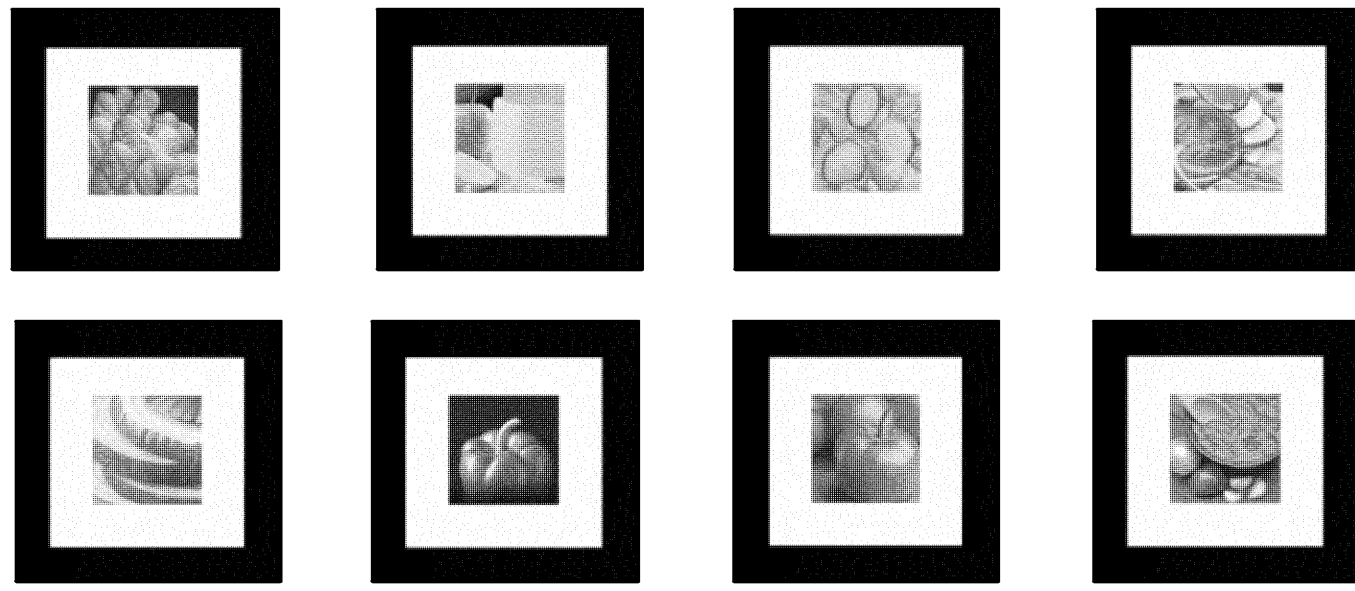
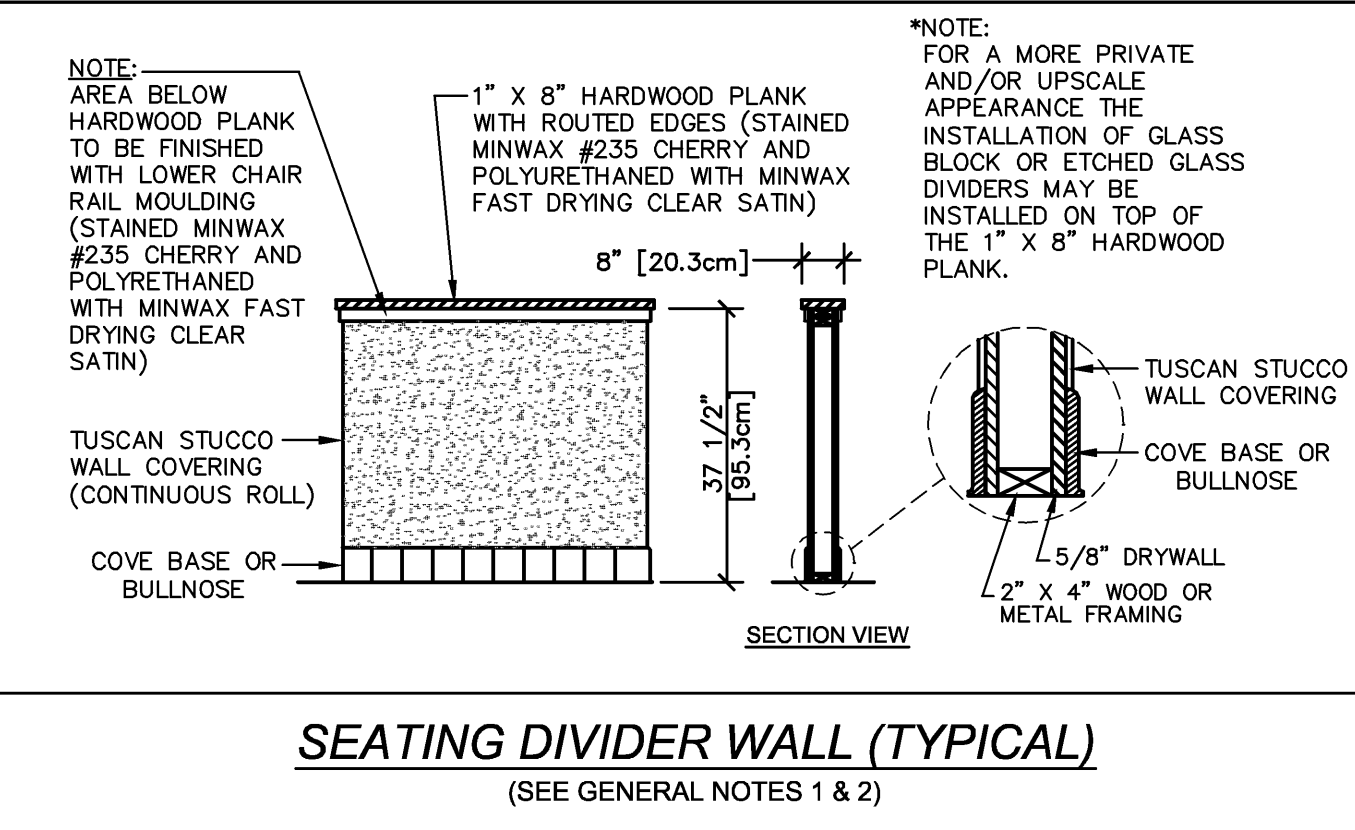
SERVICE AREA - FRONT FACING ELEVATION (TYPICAL)

(SEE GENERAL NOTES 1, 2, 3 & 5)

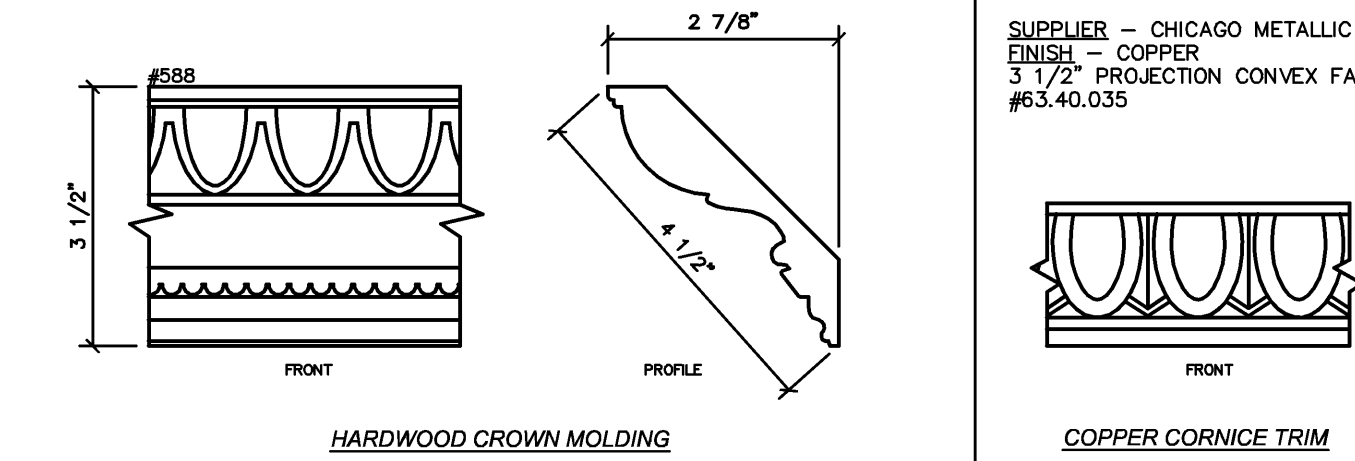


FRONT SERVICE COUNTER ELEVATION (TYPICAL)

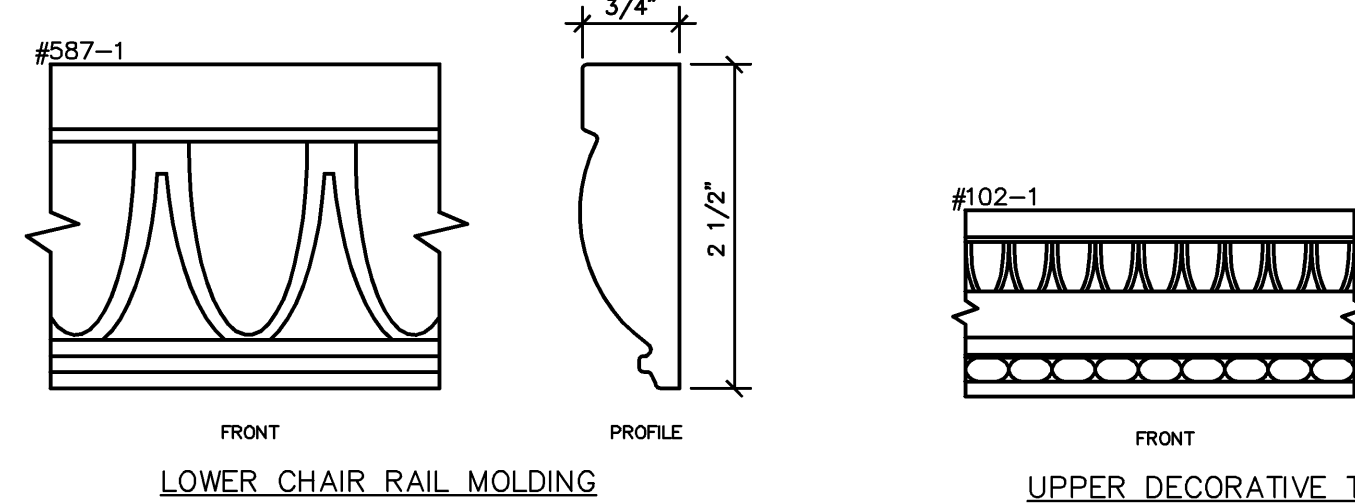
(SEE GENERAL NOTES 1, 2, 4 & 6)



WALL ART - SQUARE

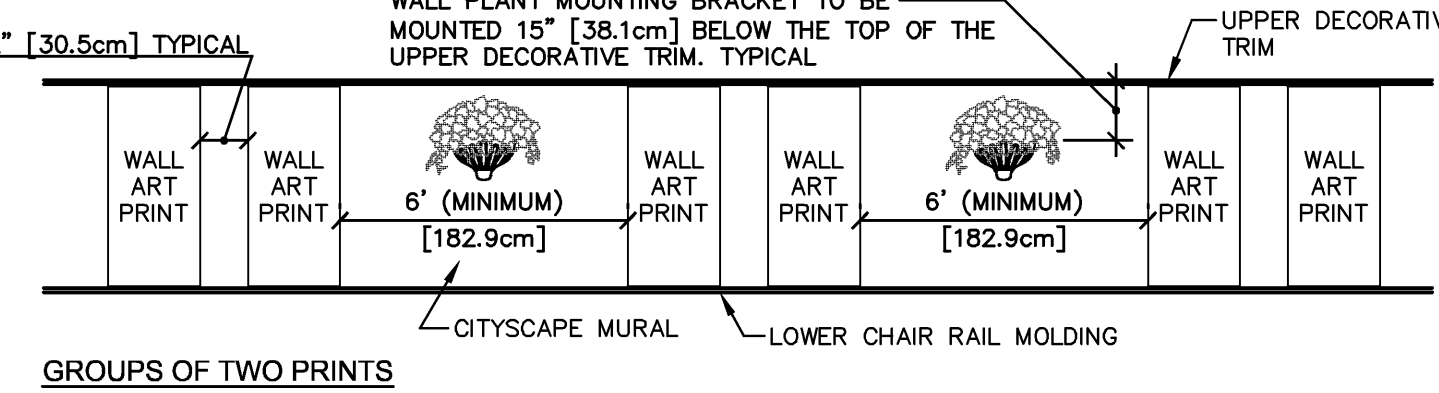
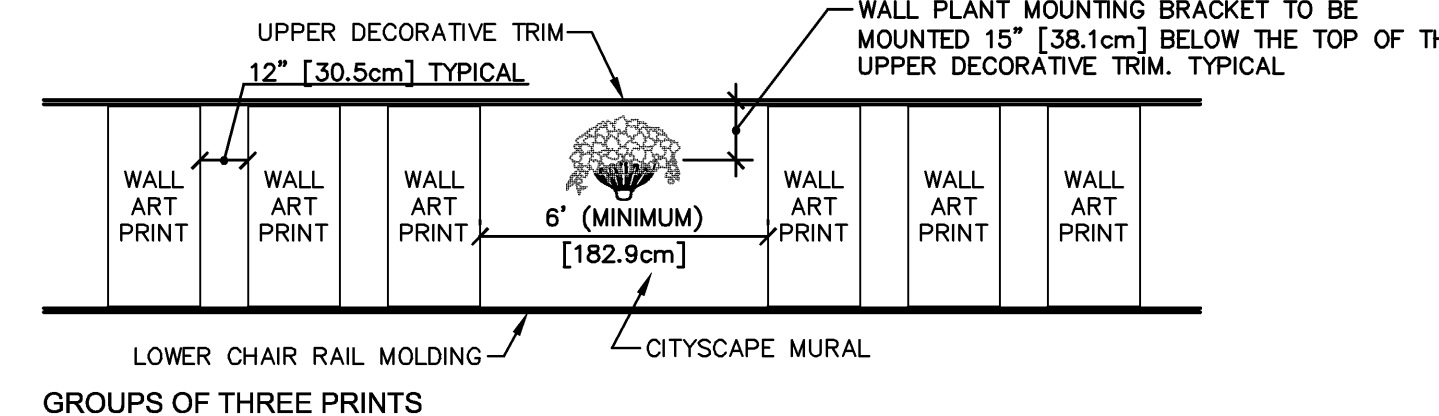
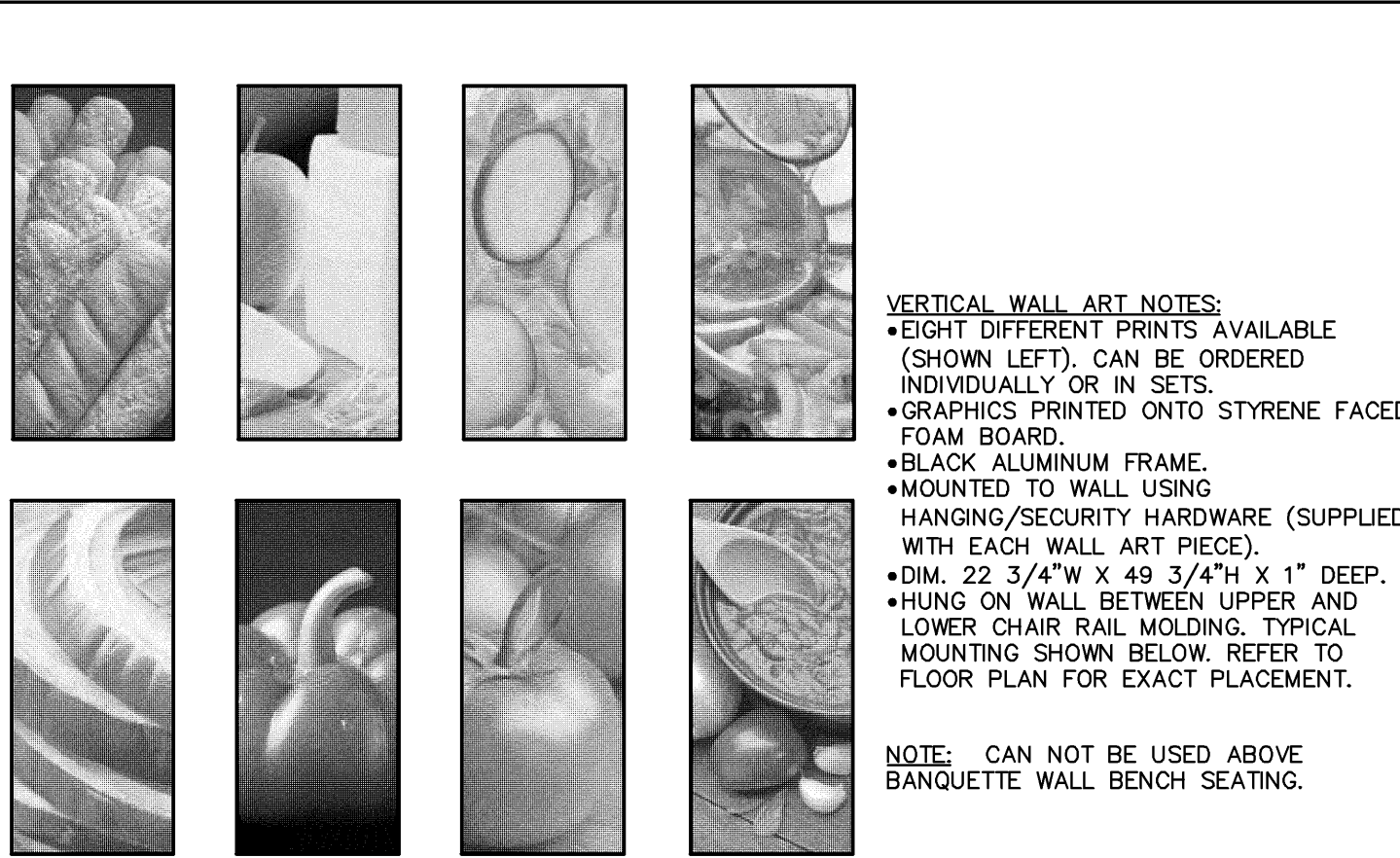
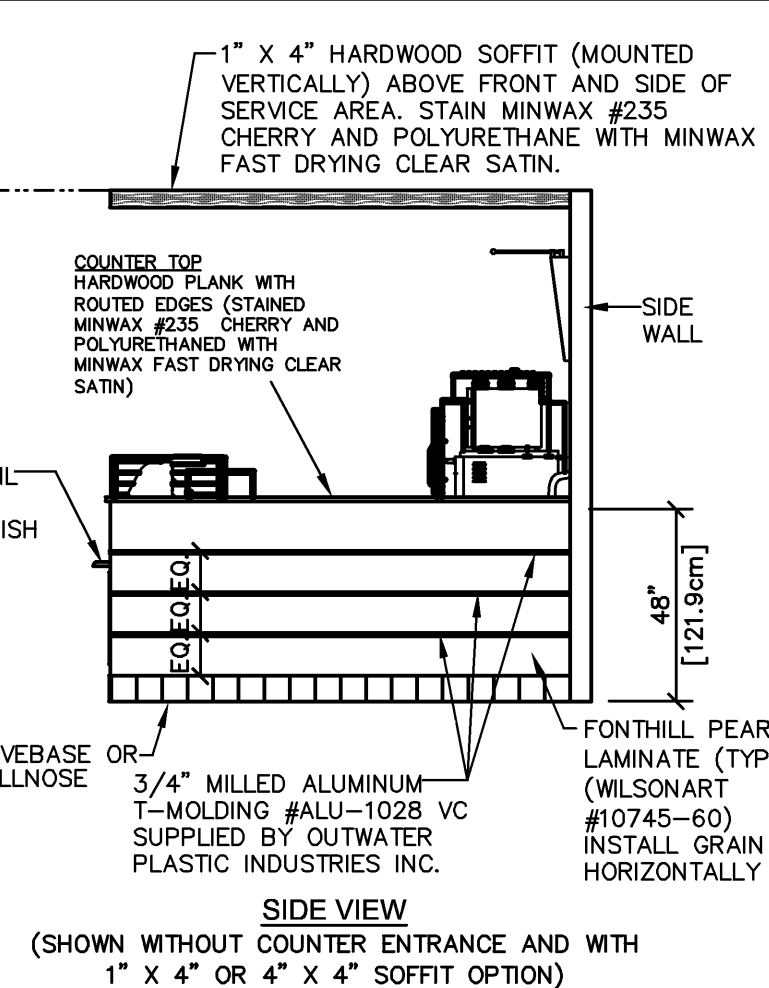
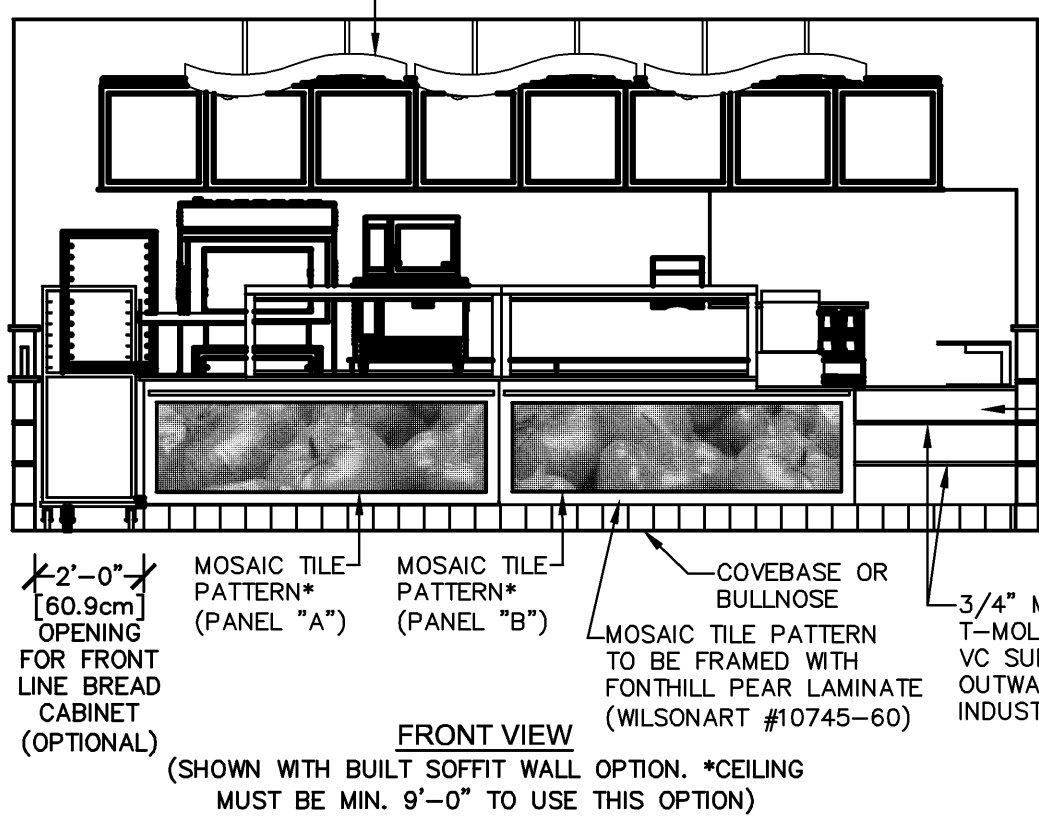


MOLDINGS (OPTIONAL)

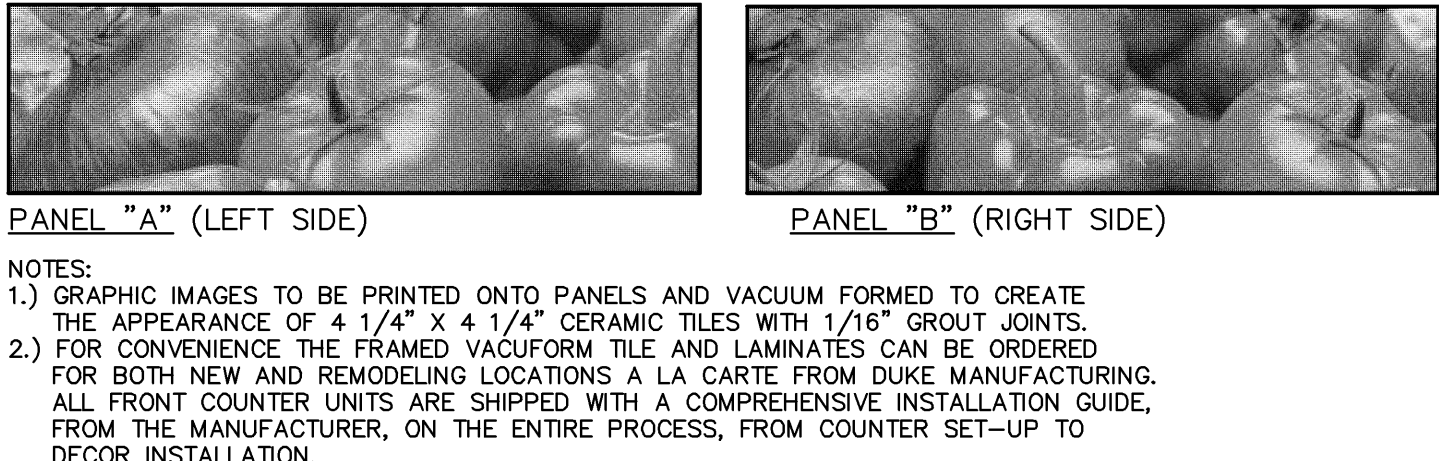


MOLDINGS (REQUIRED)

MODULAR ILLUMINATED WAVE DESIGN SOFFITS (AS SHOWN BELOW). ALSO AVAILABLE IN A STRAIGHT DESIGN. PREFINISHED IN FONT HILL PEAR LAMINATE (WILSONART #10745-60). SUSPENDED FROM CEILING. REFER TO YOUR FLOOR PLAN FOR PROPER INSTALLATION HEIGHTS. *U.S. RESTAURANTS ONLY.*



WALL ART - VERTICAL



MOSAIC TILE PATTERNS

GENERAL NOTES:

1. ALL HORIZONTAL DIMENSIONS ARE AS PER FLOOR PLANS UNLESS OTHERWISE NOTED.
2. BULLNOSE TO BE USED WHEREVER PORCELAIN FLOOR TILE IS USED UNLESS LOCAL HEALTH REQUIRES A SANITARY COVE BASE.
3. STORES WITH CEILING HEIGHTS OF 8'-8" [264.2cm] OR GREATER MAY INSTALL THE MENUBOARD OVER THE OVEN. REFER TO PLANS FOR EXACT PLACEMENT. FOR LOWER CEILING HEIGHTS REFER TO FLOOR PLANS FOR ALTERNATE MENUBOARD PLACEMENT.
4. FOR LOCATIONS WITH NEW DUKE FRONT COUNTERS, THE FINISH MATERIALS FOR THE FRONT FACE OF THE UNIT (MOSAIC TILE PATTERNS(S) WITH FONTHILL PEAR FRAMING WITH 3/4" T-MOLDING) ARE SHIPPED WITH THE COUNTER PREFABRICATED AND READY TO INSTALL. THIS APPLIES ONLY IF THE MATERIALS ARE TO BE INSTALLED DIRECTLY ONTO THE FRONT OF THE UNIT. PREFABRICATED AND FINISHED 36" AND 48" SERVICE AREA SIDE WALLS AND COUNTER ENTRANCE GATES ARE ALSO AVAILABLE FROM DUKE MANUFACTURING.
5. SEE CHAIR RAIL MOLDING DETAIL (THIS PAGE) FOR STYLE, FINISH AND PROPER PLACEMENT.
6. ALTERNATE COUNTER SIZES MAY VARY MOSAIC TILE PATTERN PLACEMENT. PLEASE REFER TO DRAWING FOR EXACT PLACEMENT.

FIRE RATINGS

	DRYWALL	UNBONDED	WOOD PARTICLE BOARD
SINGLO CITYSCAPE MURAL			
FLAME SPREAD INDEX	10		
FUEL CONTRIBUTED VALUE	0		
SMOKE DEVELOPED VALUE	5		
SINGLO TUSCAN STUCCO WALL COVERING			
FLAME SPREAD INDEX	15		
FUEL CONTRIBUTED VALUE	0		
SMOKE DEVELOPED VALUE	10		
SINGLO BUTTERNUT BRICK WALL COVERING			
FLAME SPREAD INDEX	15		
FUEL CONTRIBUTED VALUE	5		
SMOKE DEVELOPED VALUE	20		
SINGLO QUENTIN WALL COVERING			
FLAME SPREAD INDEX	10		
FUEL CONTRIBUTED VALUE	0		
SMOKE DEVELOPED VALUE	5		
SINGLO RED WALL COVERING			
FLAME SPREAD INDEX	15		
FUEL CONTRIBUTED VALUE	0		
SMOKE DEVELOPED VALUE	20		
WILSONART LAMINATE (G.P.)			
FLAME SPREAD INDEX	55	TYPE 102	TYPE 335
FUEL CONTRIBUTED VALUE	0	0	0
SMOKE DEVELOPED VALUE	30	95	135-105
MARLITE FIBERGLASS REINFORCED PANELS			
FLAME SPREAD INDEX	200		
FUEL CONTRIBUTED VALUE	0		
SMOKE DEVELOPED VALUE	450		
VACUFORM MOSAIC TILE:			
PHYSICAL PROPERTY		TEST METHOD	UNITS
HEAT DEFLECTION TEMP (ANNEALED) @264 PSI STRESS		ASTM D-648	DEGREES F
FLAMMABILITY RATING UNDERWRITERS LAB		UL 94 V-0	15"
FIRE AND EXPLOSION HAZARD DATA		FLASH POINT: 425°F, 218°C (COO)	
		AUTOTEMPERATURE: NO DATA	
		FLAMMABLE LIMITS: 6.7% TO 12.7%	

STORE MUST BE CONSTRUCTED AS DESIGNED IN THESE FLOOR PLANS SUBJECT TO FEDERAL, STATE AND LOCAL LAWS. RECIPIENT IS RESPONSIBLE FOR ENSURING COMPLIANCE WITH ALL LAWS. IF MODIFICATIONS ARE NECESSARY, PLEASE CONTACT THE FWH STORE DESIGN DEPARTMENT FOR WRITTEN APPROVAL OF THE REQUIRED CHANGES.

THIS DRAWING IS FURNISHED BY FWH ON BEHALF OF DOCTORS ASSOCIATES INC. (DAI) DAI, A SUBWAY RECIPIENT MUST DETERMINE IF THIS DRAWING MUST BE SUBMITTED TO A LICENSED ARCHITECT OR SIMILAR PROFESSIONAL UNDER FEDERAL, STATE OR LOCAL LAWS. ANY SUCH MUST BE APPROVED BY DAI.

DO NOT SCALE DRAWING. WRITTEN DIMENSIONS TAKE PRECEDENCE OVER SCALED DIMENSIONS AND SHALL BE VERIFIED IN THE FIELD BY THE GENERAL CONTRACTOR AND/OR FRANCHISEE/OWNER. ANY DISCREPANCY IN DIMENSIONS SHALL BE BROUGHT TO THE IMMEDIATE ATTENTION OF DAI AREA DEVELOPMENT AGENT OR DESIGNATED FIELD REPRESENTATIVE.

THE GENERAL CONTRACTOR AND EACH SUB-CONTRACTOR SHALL MAKE HIS OWN INSPECTIONS AND MEASUREMENTS. FWH AND DAI SHALL NOT BE HELD RESPONSIBLE FOR THE ACCURACY OF DIMENSIONS AND FOR ERRORS AND OMISSIONS IN THE DRAWINGS IF WRITTEN CONFIRMATION HAD NOT BEEN RECEIVED BY THE FWH STORE DESIGN DEPARTMENT.

THIS DRAWING AND THE INFORMATIONAL CONTENT HEREOF IS THE CONFIDENTIAL PROPERTY OF DAI AND IS PROVIDED SOLELY FOR THE USE OF AUTHORIZED FRANCHISEES, THEIR AGENTS AND CONTRACTORS. RECIPIENT AGREES NOT TO REPRODUCE, COPY, USE OR TRANSMIT THIS DRAWING AND/OR ITS INFORMATIONAL CONTENT, IN WHOLE OR IN PART, OR TO ALLOW SUCH ACTION BY OTHERS, FOR ANY PURPOSE, EXCEPT WITH THE WRITTEN PERMISSION OF DAI OR FWH ACTING ON BEHALF OF DAI. RECIPIENT FURTHER AGREES TO SURRENDER THIS DRAWING AND ANY PERMITTED COPIES HEREOF UPON DEMAND.

SUBWAY
WORLD HEADQUARTERS
(203) 877-4281
(800) 888-4848
325 BIC DRIVE
MILFORD, CT 06461

TUSCANY II DECOR BACK-UP SHEET

REVISION:	BY	DATE
54" SLICING PIT WALL & ADDED SOAP DISPENSERS	PMR	11/20/08
RED WALLCOVERING MOUNTING	PMR	3/4/09
ADDED MODULAR SOFFITS	PMR	10/20/09
SQUARE WALL ART NOTES	PMR	11/19/09
SQUARE WALL ART NOTES "REVISED"	PMR	3/23/10

DATE:	10-31-08
DESIGNED BY:	PATRICK ROSE
DRAWN BY:	PMR
REVIEWED BY:	PMR

SCALE: NOT TO SCALE

SHEET #:
1 of 4
PRINTED 11/17/2010

©2010 DOCTORS ASSOCIATES, INC.