

PANEL A (EXISTING)

PANEL 3ø 4 WIRETYPE NEMA 1LOC. KITCHEN EXITMTG. FLUSHMAIN M.L.O.

BUS: AMP 200VOLTS 120/208FEEDER EXISTINGAT

DESCRIPTION	WATTAGE			OUTLETS			BKR			P			BKR			OUTLETS			WATTAGE			DESCRIPTION
	A	B	C	L	T	R	A	B	C	A	B	C	A	B	C	A	B	C	A	B	C	
AC	2640						50	3		1	2		1	20		500			1080			POS
AC		2640					2	2		2	4		4	1	20							DELI 1
AC			2640				6	2		6	6		6	1	20							DELI 2
BREAD	2750						30	3		7	8		8	1	20		1320		1080			HOT WELL
BREAD		2750					9			10			10	1	20		1500					MICRO 1
BREAD			2750				11			12			12	1	20				1500			MICRO 2
TOAST 1	2500						30	13		14			14	1	20		1200					REF BACK COUNTER
TOAST 2		2500					15			16			16	1	20							FRNT GFI
WIC			1440				20	1		17			18	1	20				450		950	PREP GFI
WIC	1440						19			20			20	1	20		960					DRINKS COOLER
WIF		1850					20	1		21			22	1	20				400			SODA
WIF			1850				21			22			23	1	20							TEA
DOOR HEATERS	480						20	1		25			26	1	20		1320					ICE
SODA BAG		540					20	1		27			28	1	20		850					HOOD
SIGN			360				20	1		29			30	1	20						480	MENU
EM. LIGHTS	300						20	1		31			32	1	20		1140					LIGHTS
HOOF GFI		300					20	1		33			34	1	20				960			LIGHTS
H2O			2760				50	3		35			36									
H2O	2760						37			38			39									
H2O		2760					40			41			42									
CONNECTED LOAD	12,870	13,340	11,800													6,440	5,240	4970				CONNECTED LOAD
# A LOAD	19,310																					
# B LOAD		18,580																				
# C LOAD			16,770																			
TOTAL LOAD	54,660																					
54,660 KW+LCL56,160 KW=56.2 KW AT208 VOLTS 3ø156.11 AMPS																						

NOTES:  
EXIT SIGNS SHALL BE READILY VISIBLE FROM ANY DIRECTION OF APPROACH AND EXIT SIGNS SHALL BE LOCATED TO CLEARLY INDICATE THE DIRECTION OF EGRESS TRAVEL AND SUCH THAT NO POINT SHALL BE MORE THAN 100 FEET FROM THE NEAREST VISIBLE SIGN. CBC 1011.1

EXIR SIGNS SHALL BE CONNECTED TO AN EMERGENCY ELECTRICAL POWER SYSTEM (STORAGE BATTERIES, UNIT EQUIPMENT, OR AN ON SITE GENERATOR SET) OR AN APPROVED SELF LUMINOUS SYSTEM THAT PROVIDES CONTINUOUS ILLUMINATION INDEPENDANT OF THE EXTERNAL POWER SOURCE TO ENSURE THAT THE EXIT SIGNS ARE ILLUMINATED AT ALL TIMES. CBC 1011.5.3

THE MEANS OF EGRESS ILLUMINATION LEVEL SHALL NOT BE LESS THAN 1 FOOT-CANDLE (11 LUX) AT THE WALKING SURFACE LEVEL. CBC 1006.2

THE POWER SUPPLY FOR MEANS OF EGRESS ILLUMINATION SHALL NORMALLY BE PROVIDED BY THE PREMISES' ELECTRICAL SUPPLY. IN THE EVENT OF POWER SUPPLY FAILURE, AN EMERGENCY ELECTRICAL SYSTEM SHALL AUTOMATICALLY ILLUMINATE THE EGRESS SYSTEM. CBC 1006.3

PROVIDE AN ACCESSIBLE MEANS OF EGRESS PER CBC SEC. 1007

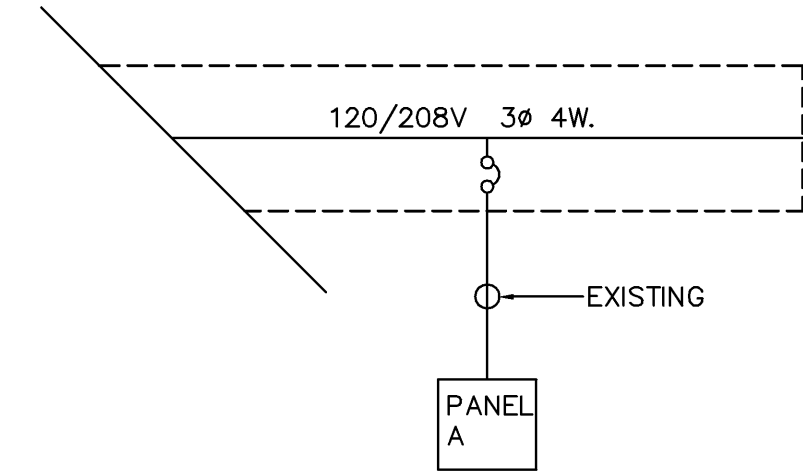
EXISTING SHOW WINDOW RECEPTACLE AND CIRCUIT.

ALL RECEPTACLES IN KITCHEN AND PREP AREA TO HAVE G.F.C.I. PROTECTION.

DAYLIGHTING AREA SHALL HAVE SEPERATE LIGHTING CONTROLS.

NOTE: WIRING METHODS

NONRESIDENTIAL PROJECTS SHALL BE WIRED WITH AC-90, EMT, FLEX OR EQUAL PROTECTION

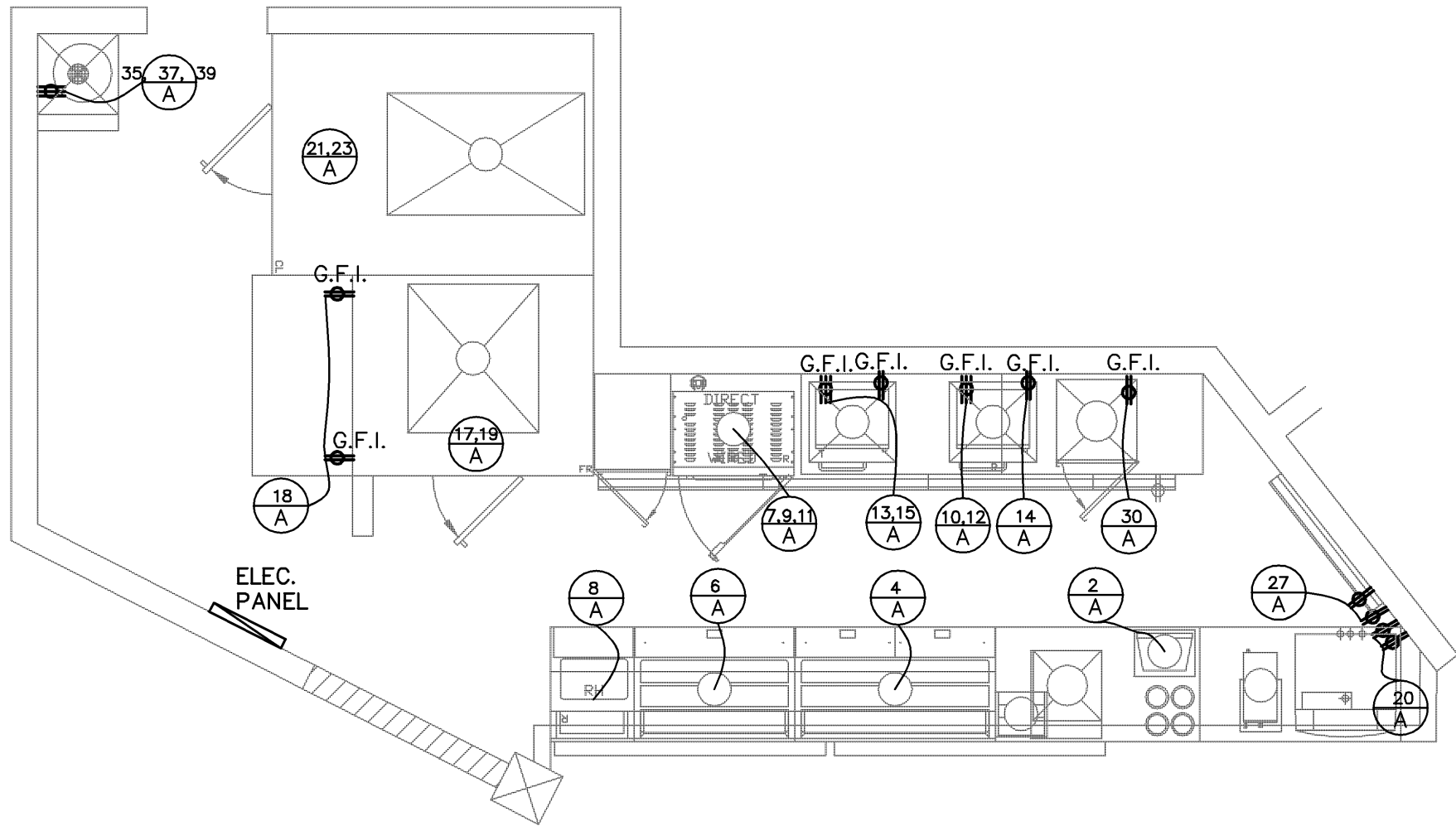


SINGLE LINE DIAGRAM

ALL ITEMS ARE EXISTING

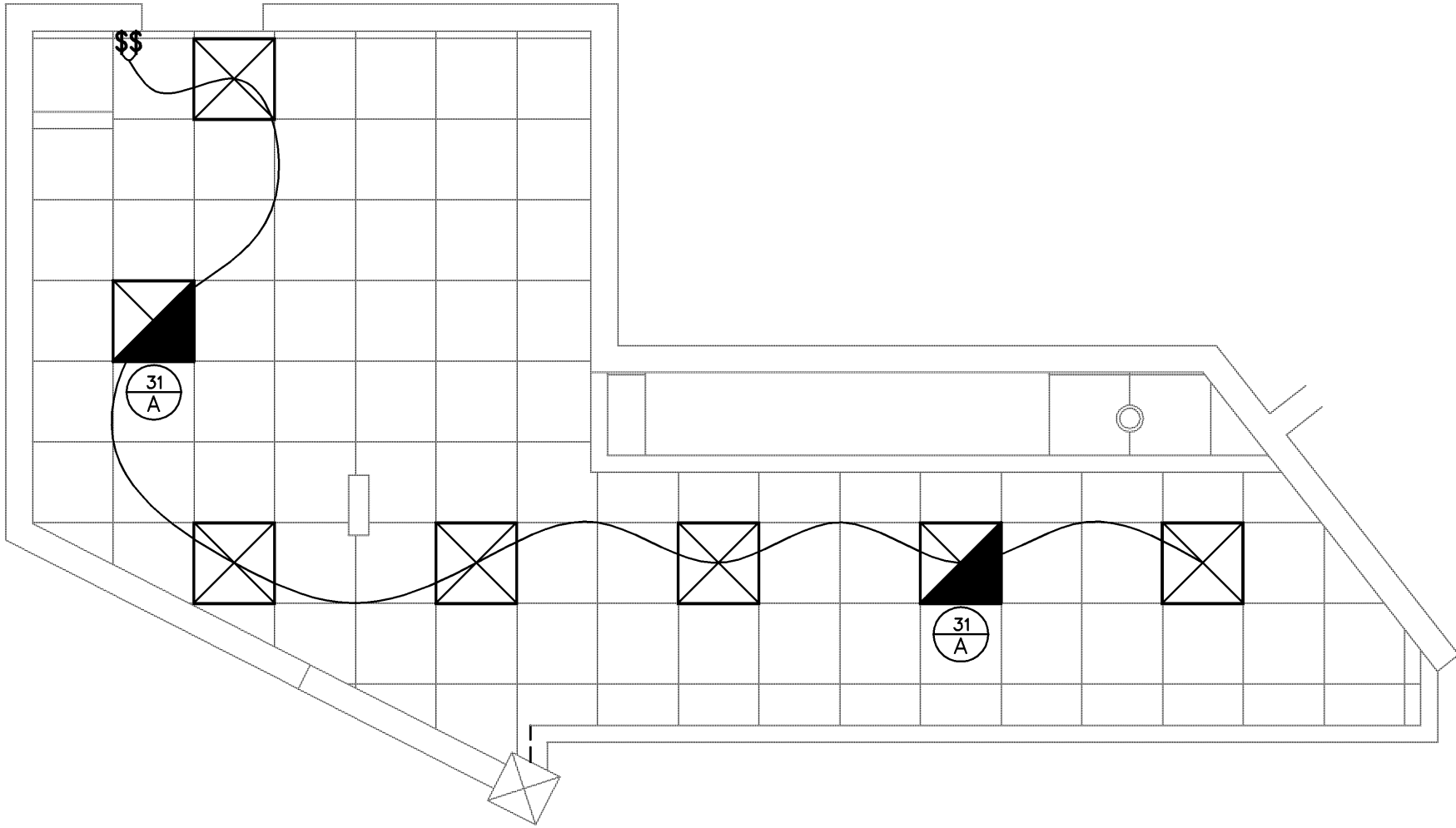
FIXTURE SCHEDULE

	2X2 ACRYLIC FLOURESCENT LIGHT 11-T5 60 WATTS
--	---



ELECTRICAL PLAN

SCALE: 1/4" = 1'-0"



ELECTRICAL LIGHTING PLAN

SCALE: 1/4" = 1'-0"

P.E.  
INCORPORATED  
PASQUINI  
ENGINEERING  
903 H Street Suite 300  
Bakersfield, Ca. 93304  
Telephone: (661)-328-9600  
Fax: (661)-328-9030

NO.	DATE

SUBWAY

950 CAMARILLO CENTER DR.  
CAMARILLO, CA 93010

THESE PLANS ARE NOT FOR CONSTRUCTION UNLESS A "WET STAMP & SIGNATURE" FROM BOTH THE ENGINEER OF RECORD AND A APPROVAL STAMP WITH A "WET STAMP & SIGNATURE" FROM THE LOCAL GOVERNING AGENCY ARE PRESENT.

DWG. BY	J.P.
CHK'D BY	
DATE	10/4/10
JOB NO.	6233
FILE NO.	623322

EXP. 12/31/10

SHEET

E2

PRINTED: 10/28/2010