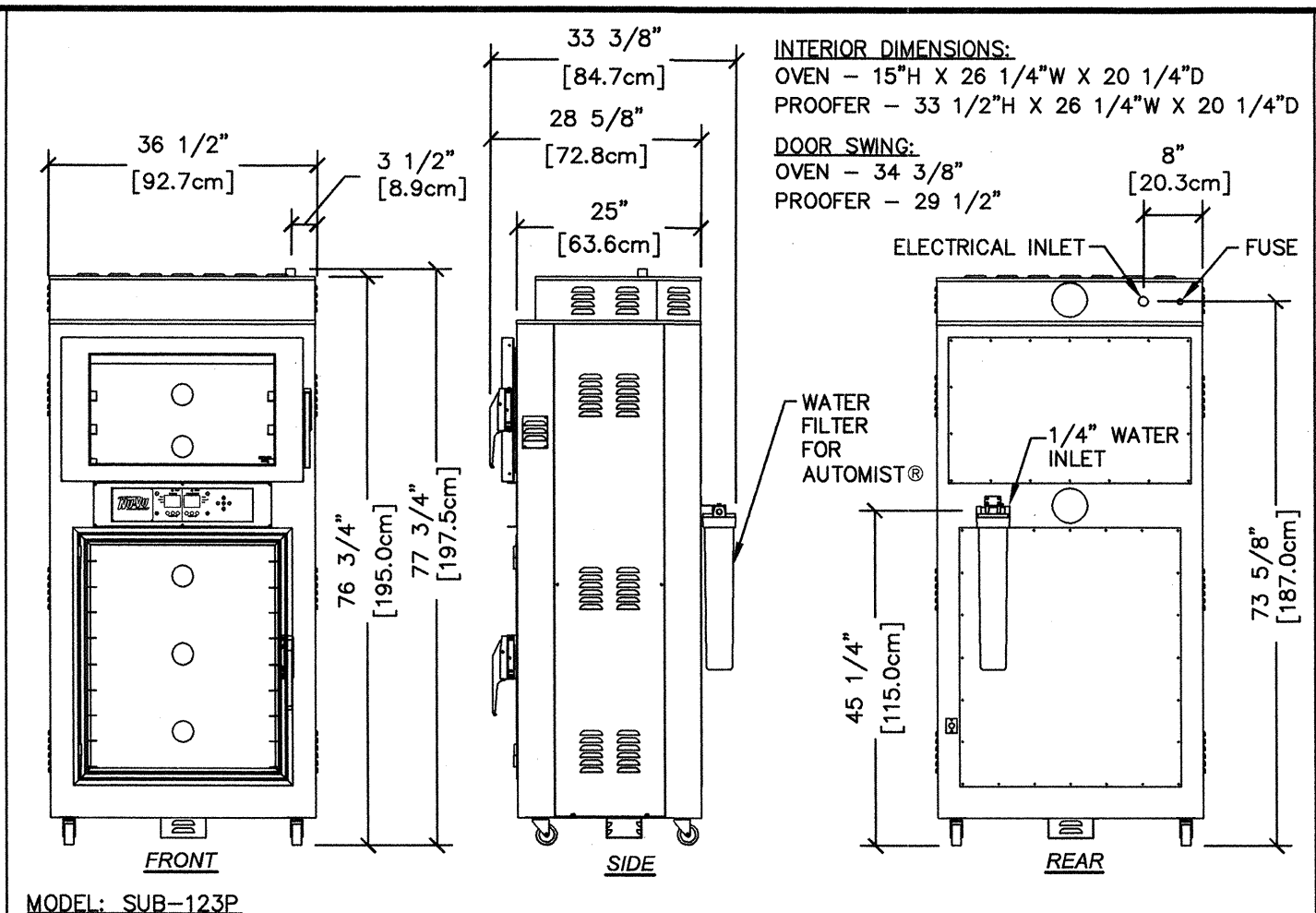


MODEL: TSC-6/18  
1/4" WATERLINE IS REQUIRED FOR PROOFER. MINIMUM WATER PRESSURE SPECIFICATIONS FOR THE 1/4" WATER CONNECTION IS 30 psi.

FIELD WIRING REQUIRED PER LOCAL CODE UNIT IS SHIPPED FROM FACTORY TO BE HARDWIRED ON SITE. THE TSC-6/18 HAS UL, CSA, ANSI, CE & WEEE LISTINGS.

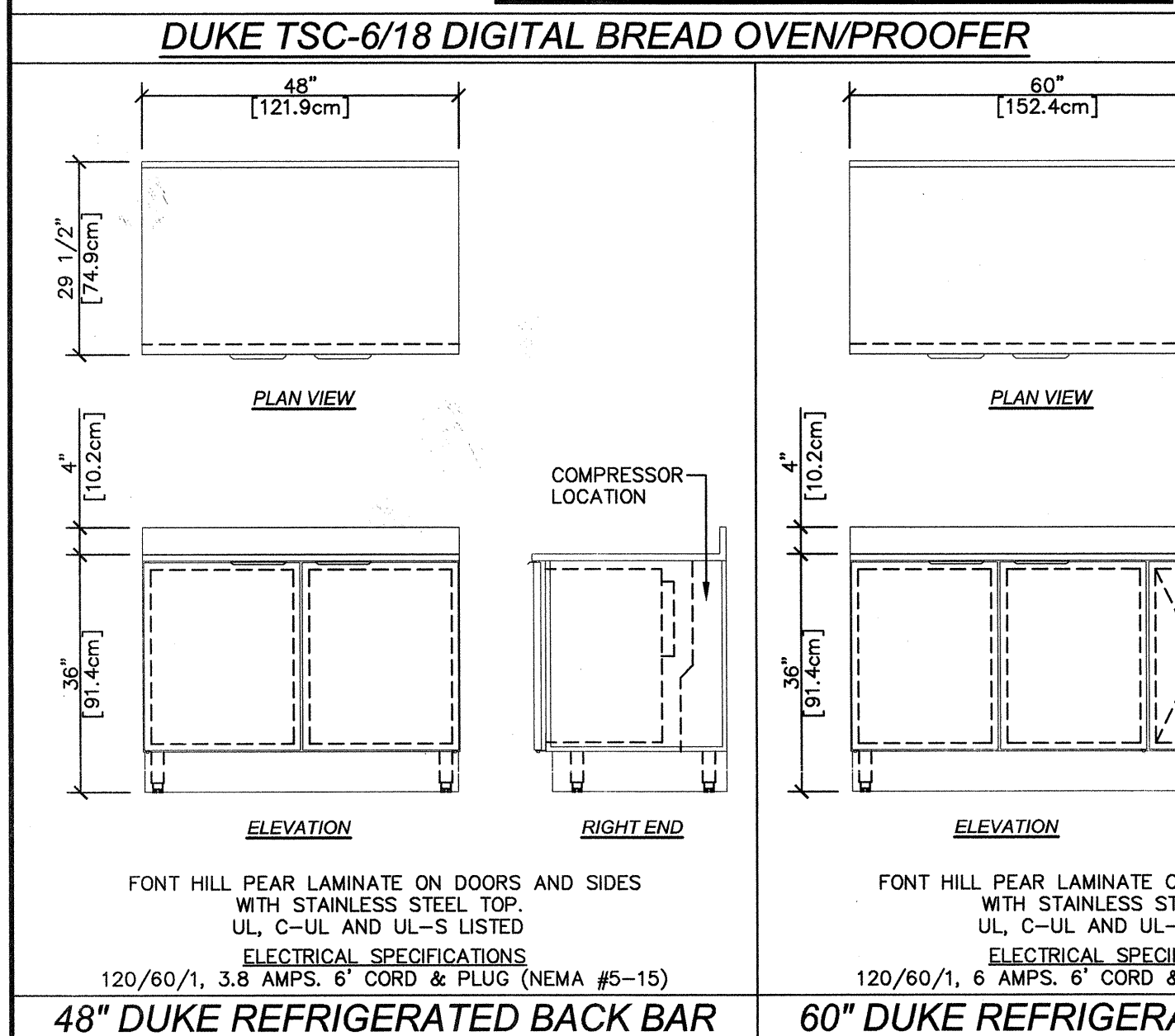
LINE RATING-ELECTRICAL SPECIFICATIONS						
VOLTAGE	FREQUENCY	PHASE	WATTS	AMPS	SHIP. WT.	
208	60	SINGLE	6650	32	650 LBS.	
208	60	3P	6650	32.1	650 LBS.	
240	50 & 60	SINGLE	7200	30	650 LBS.	
240	60	3P	7200	30.1	650 LBS.	
380-415	50	3N	7200	30.2	650 LBS.	



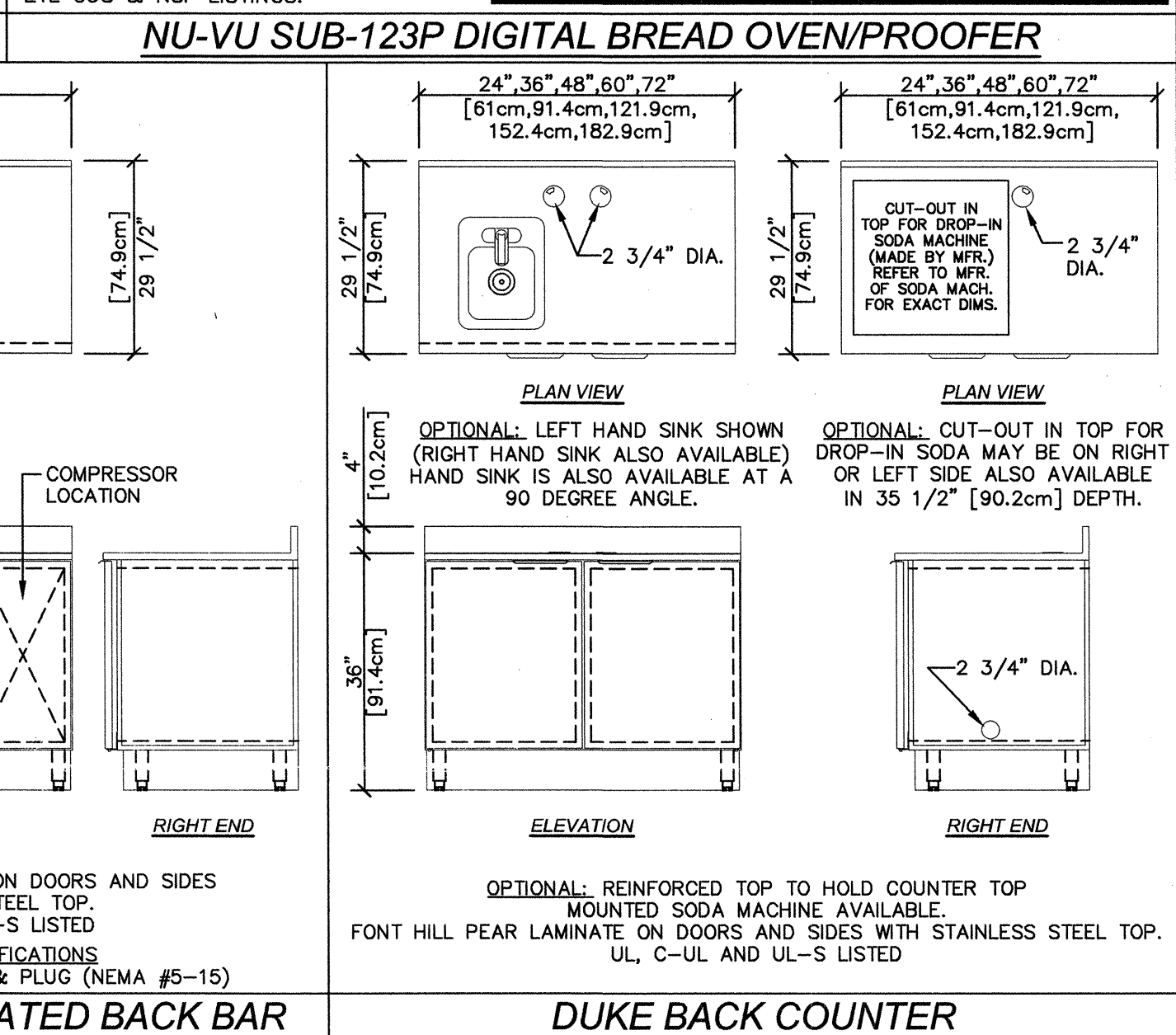
MODEL: SUB-123P  
1/4" WATERLINE IS REQUIRED FOR PROOFER. MINIMUM WATER PRESSURE SPECIFICATIONS FOR THE 1/4" WATER CONNECTION IS 30 psi.

WATTAGE:  
OVEN: 4000 - PROOFER: 1200  
FIELD WIRING REQUIRED PER LOCAL CODE UNIT IS SHIPPED FROM FACTORY TO BE HARDWIRED ON SITE. THE SUB-123P HAS ETL, CUS & NSF LISTINGS.

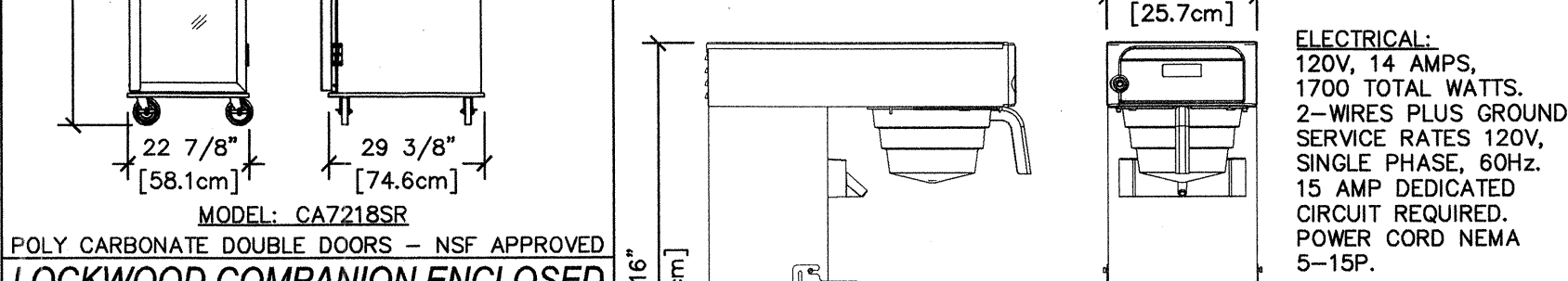
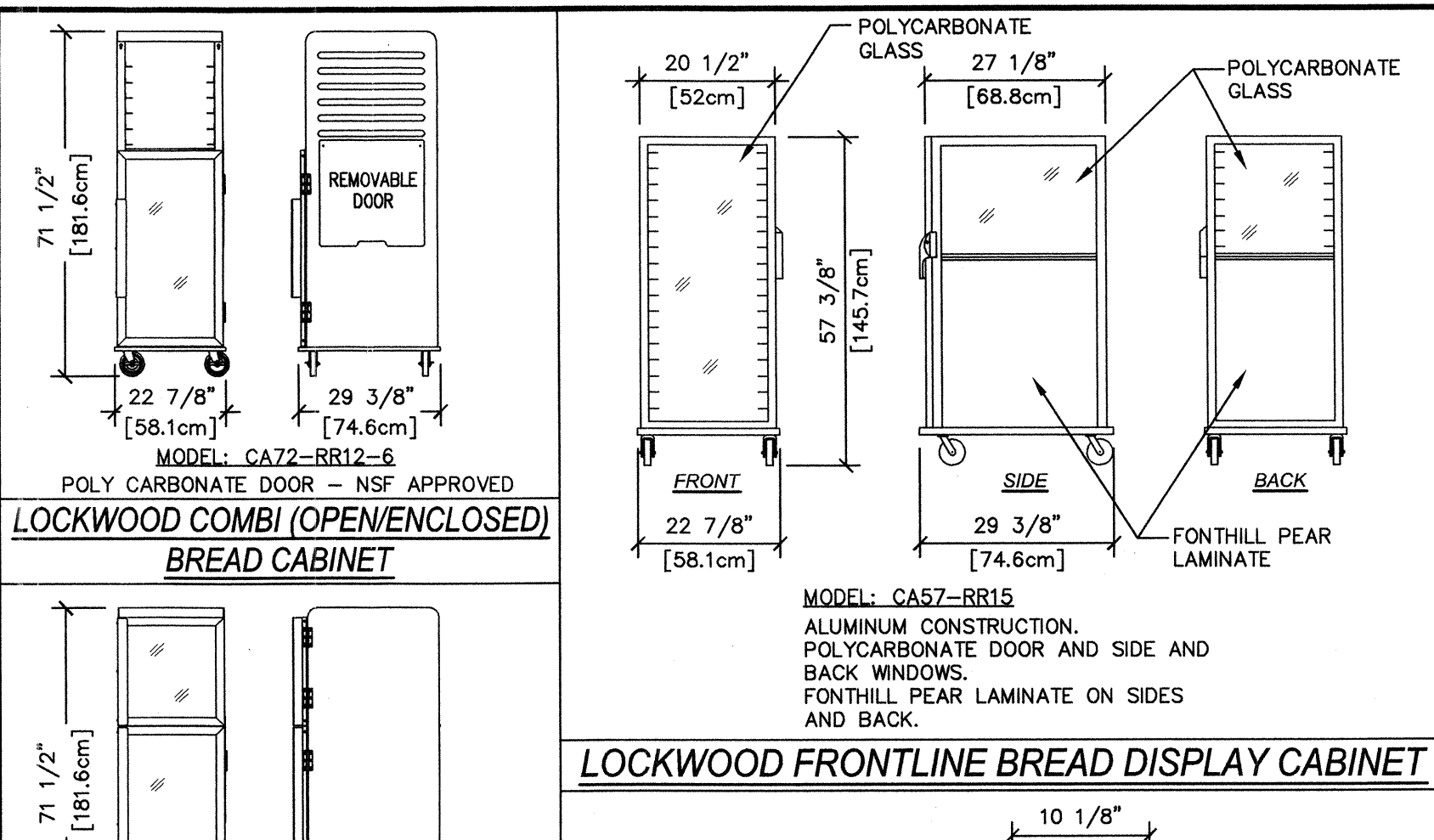
ELECTRICAL SPECIFICATIONS						
VOLTAGE	PHASE	AMPS	KILOWATTS	NO. WIRES	SHIP. WT.	
120/208	1	30	5.135	4	570 LBS.	
120/240	1	27	5.135	4	570 LBS.	
120/208	3	20	5.135	5	570 LBS.	
120/240	3	17	5.135	5	570 LBS.	



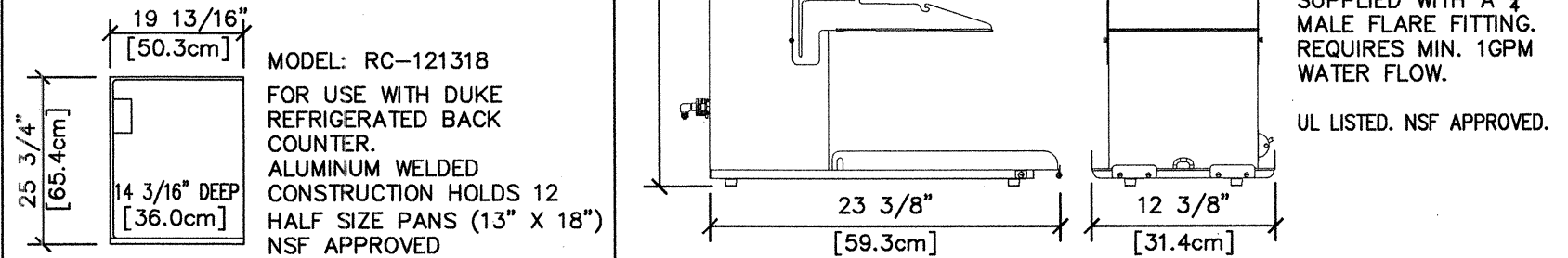
DUKE TSC-6/18 DIGITAL BREAD OVEN/PROOFER



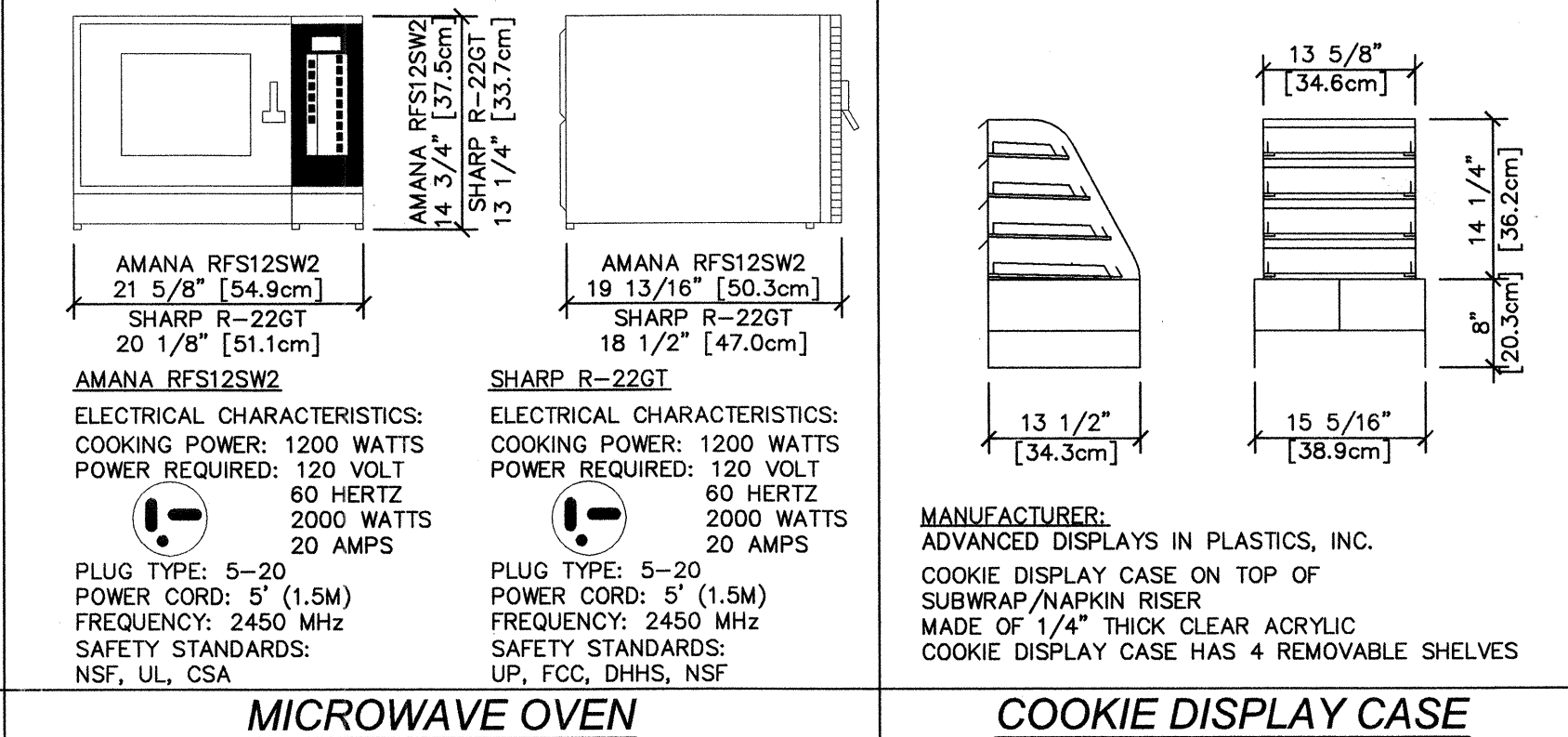
NU-VU SUB-123P DIGITAL BREAD OVEN/PROOFER



LOCKWOOD COMBI (OPEN/ENCLOSED) BREAD CABINET

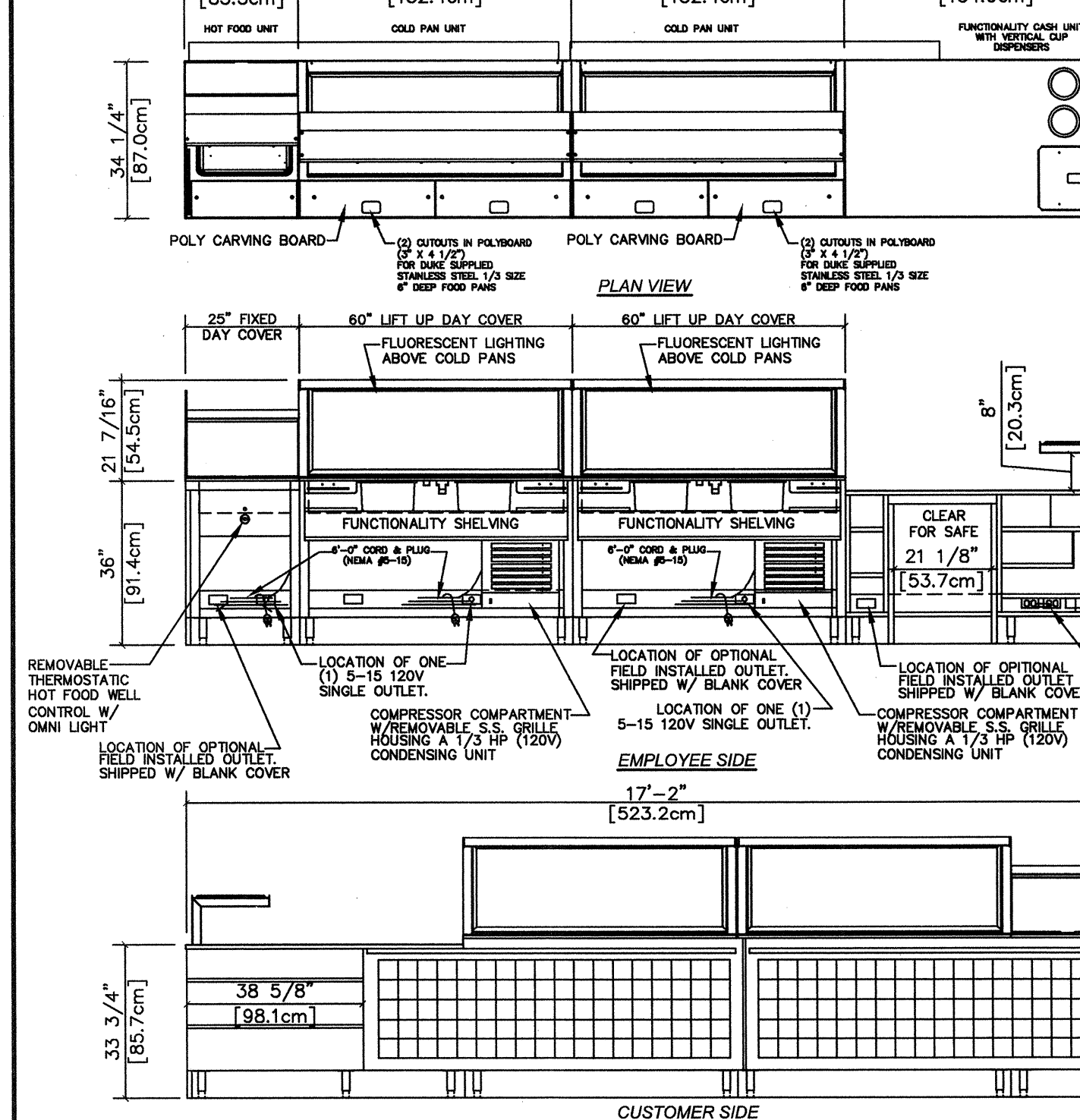


LOCKWOOD COMPANION ENCLOSED BREAD CABINET

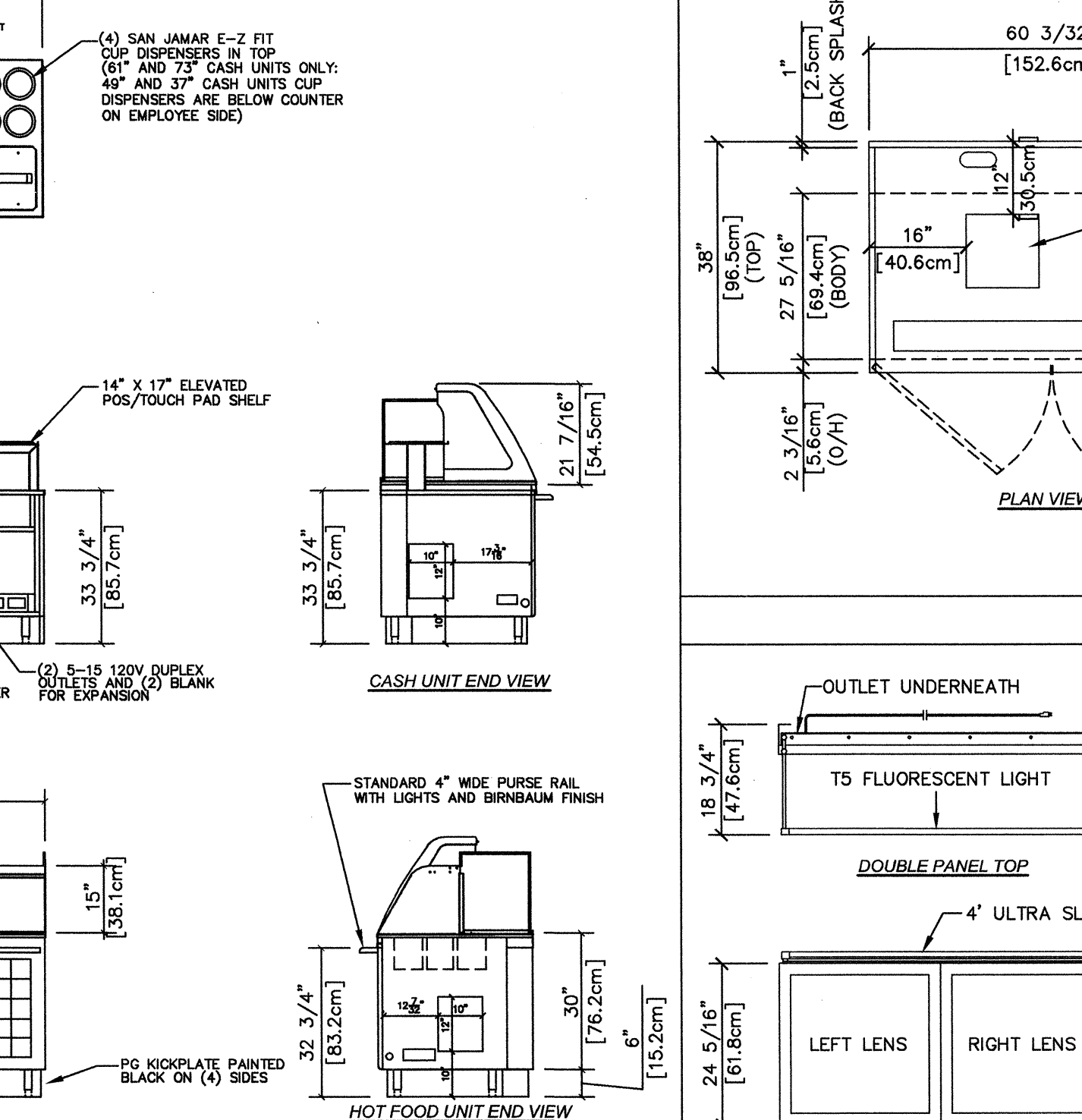


DUKE RETARDER CABINET

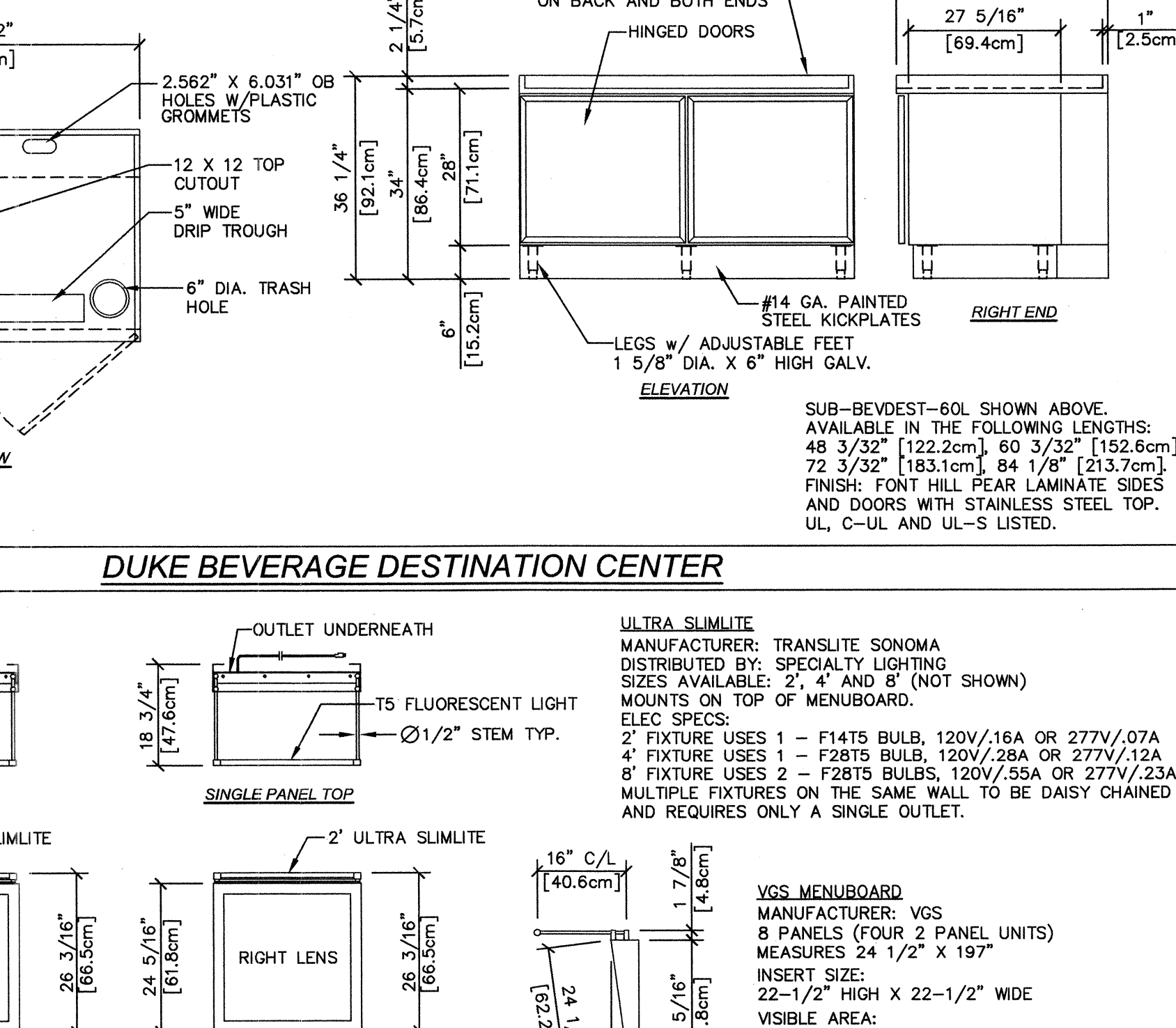
BUNN INFUSION ITCB BREWER



48" DUKE REFRIGERATED BACK BAR

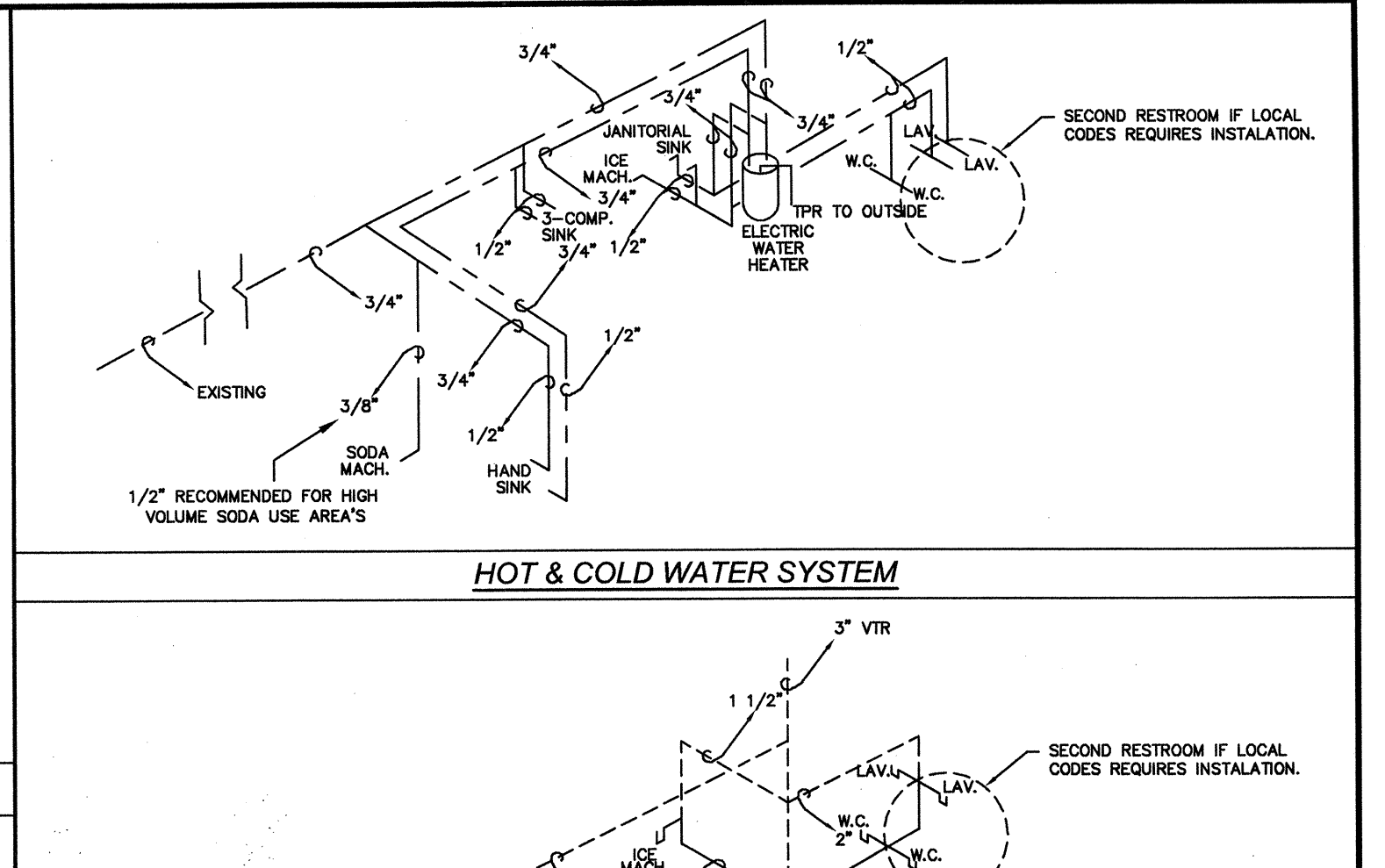


60" DUKE REFRIGERATED BACK BAR

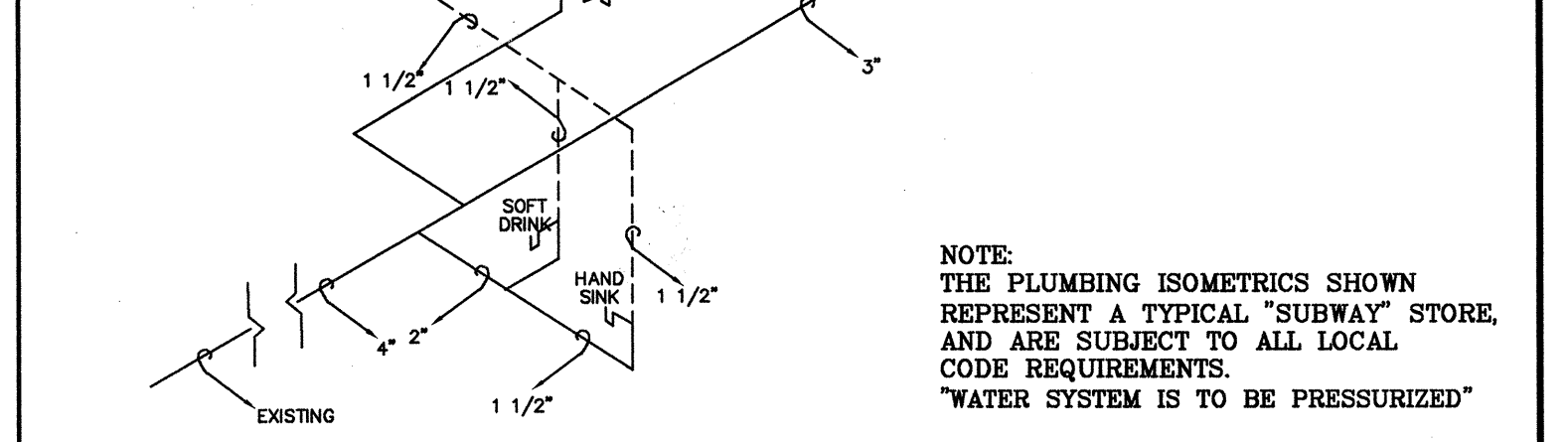


MICROWAVE OVEN

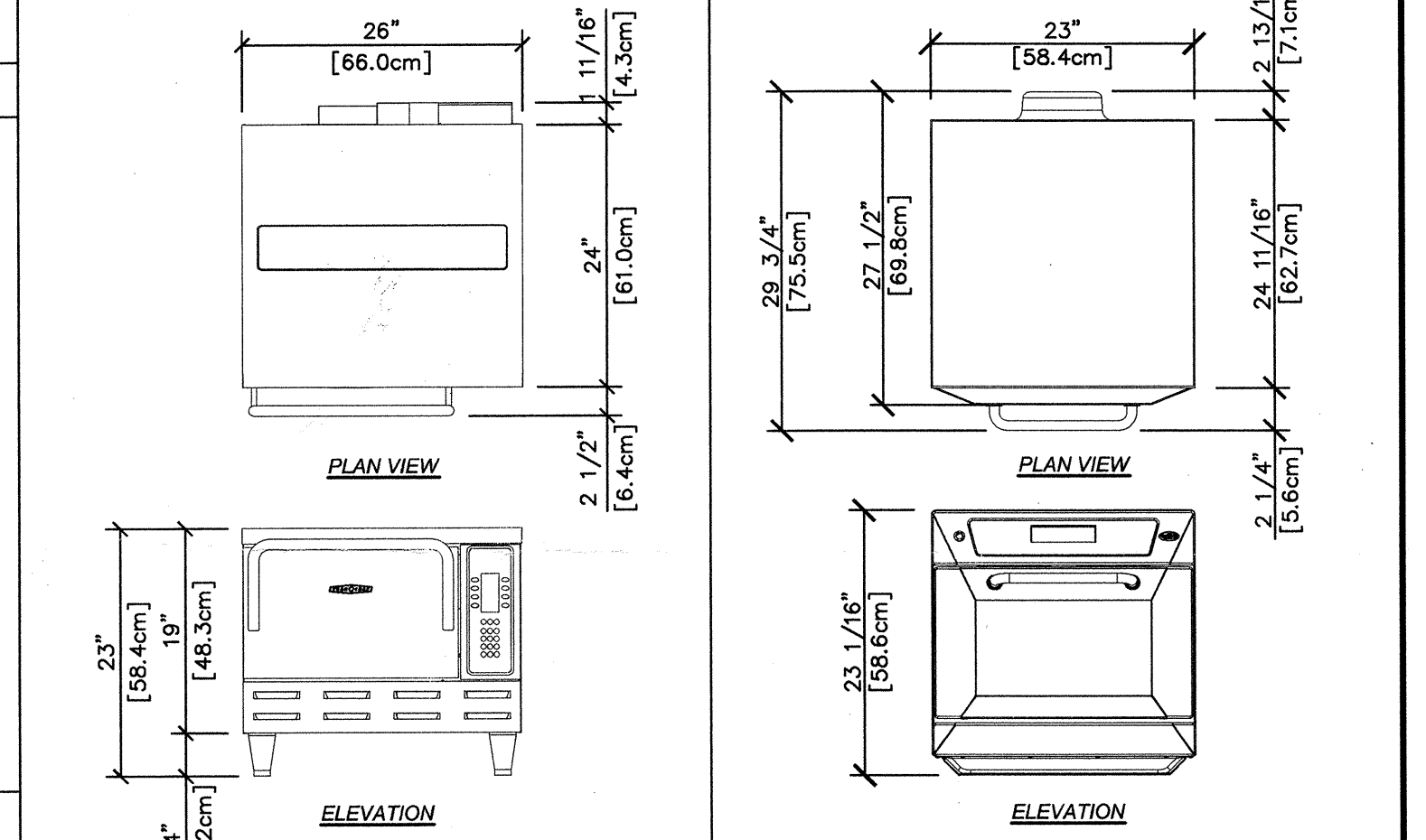
COOKIE DISPLAY CASE



HOT & COLD WATER SYSTEM

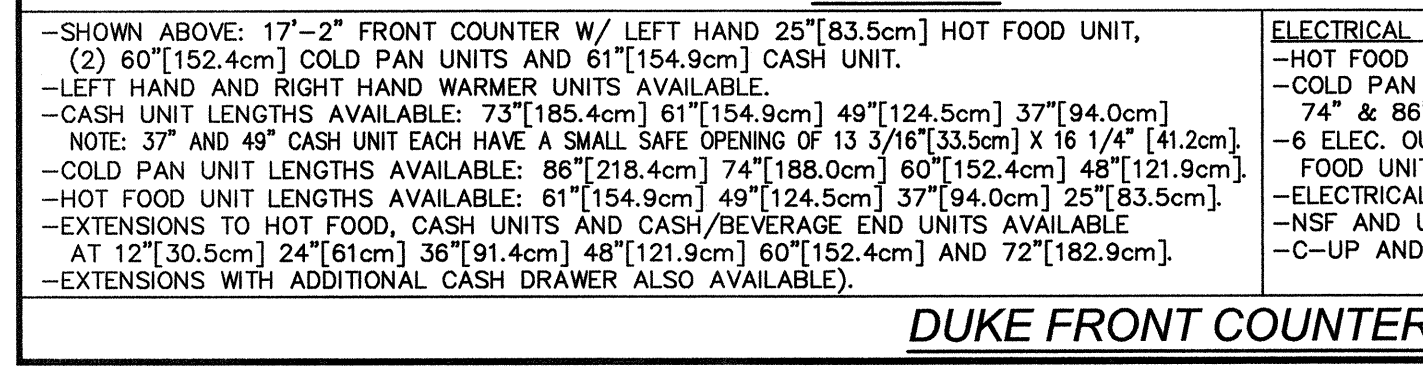


DRAINAGE & VENT SYSTEM

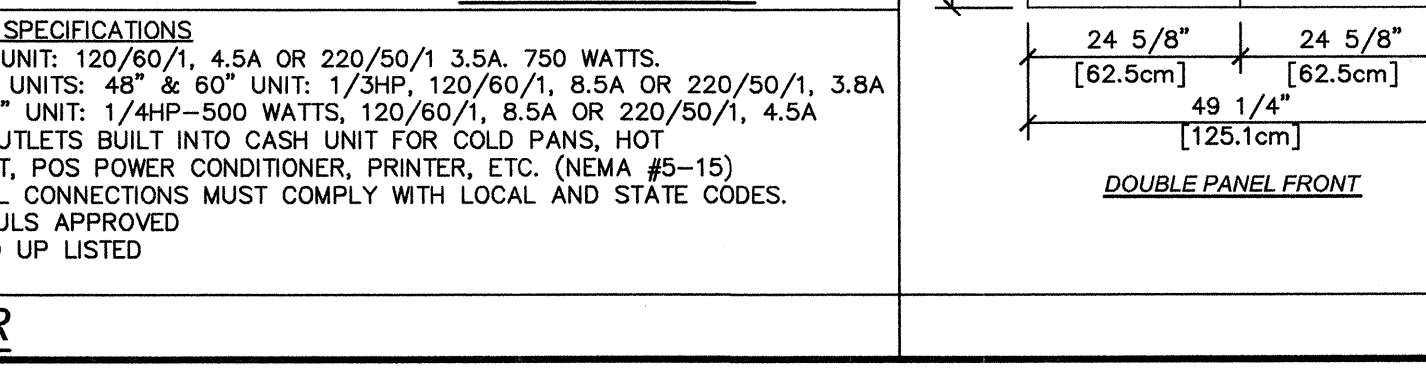


TORNADO 2 MICROWAVE/CONVECTION OVEN

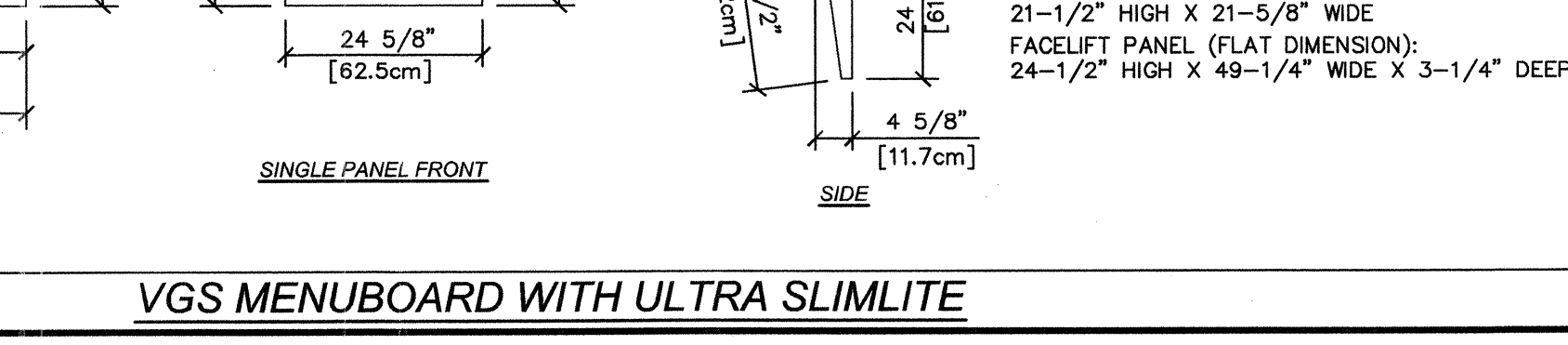
402S VERSION 3 MICROWAVE/CONVECTION OVEN



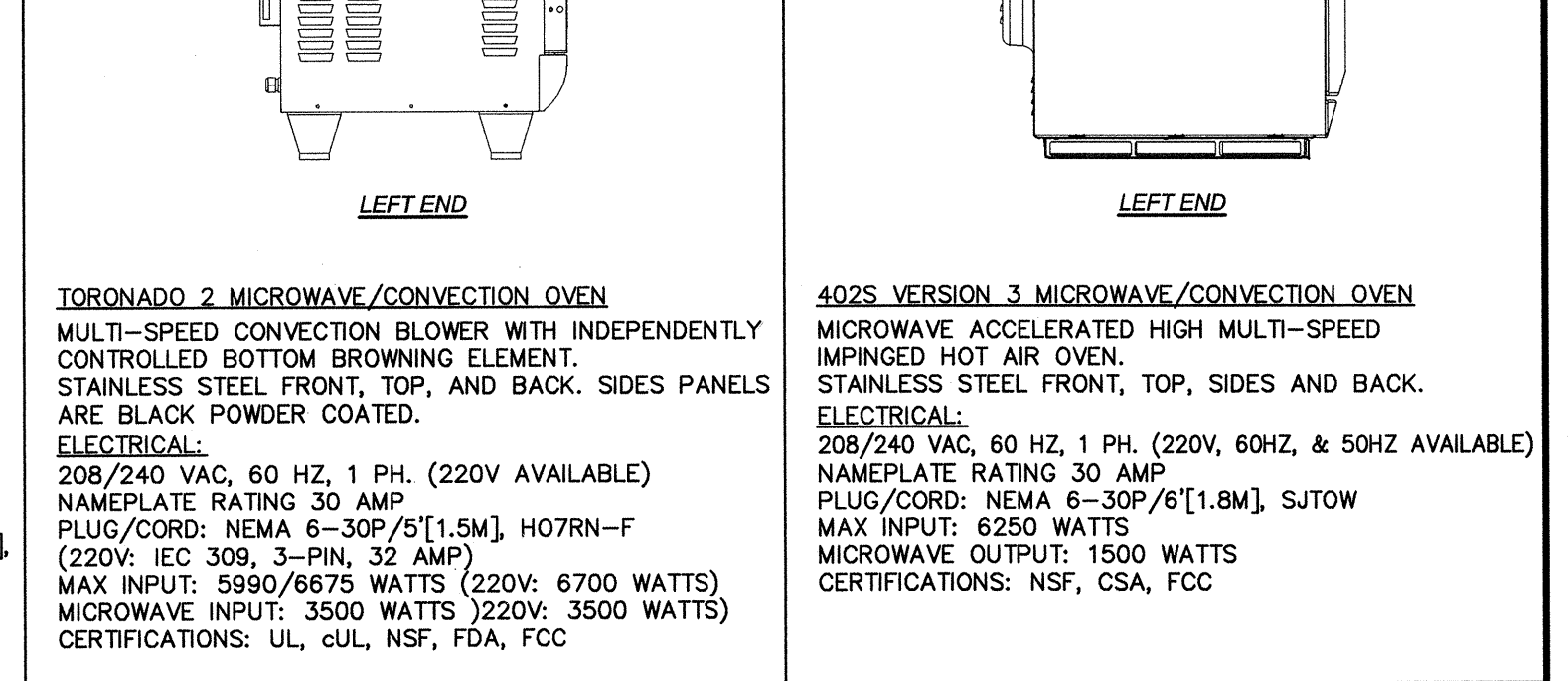
DUKE FRONT COUNTER



DUKE FRONT COUNTER

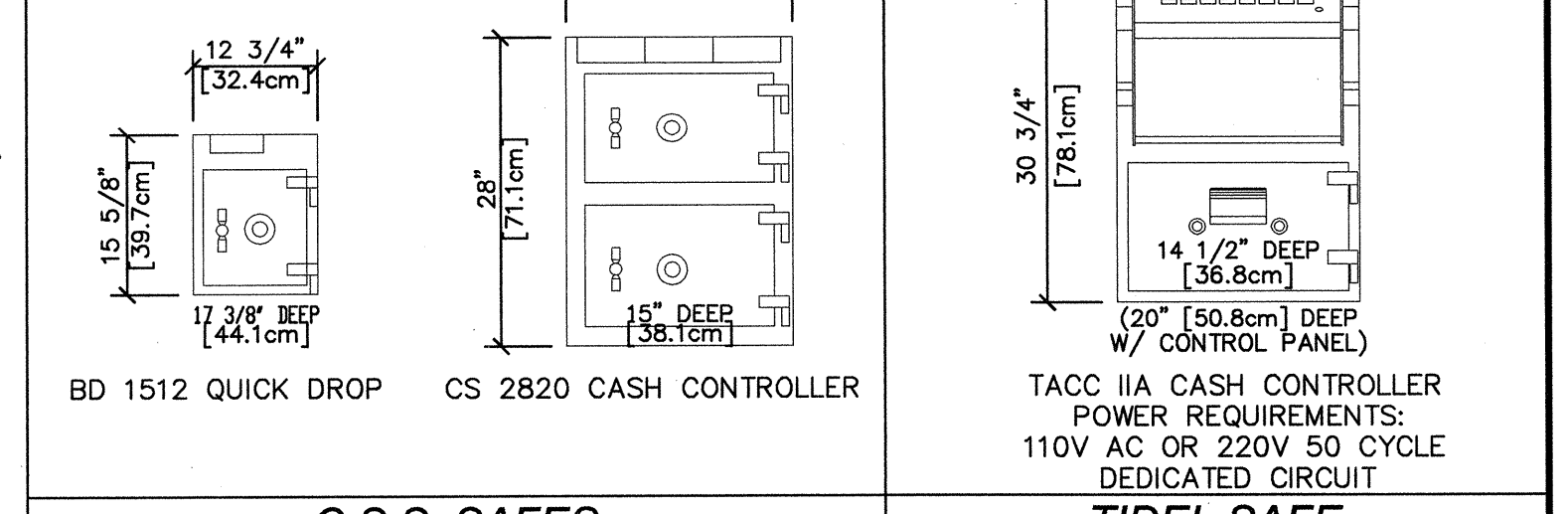


VGS MENUBOARD WITH ULTRA SLIMLITE



TURBOCHEF RAPID COOK OVEN

MERRYCHEF RAPID COOK OVEN



C.S.S. SAFES

TIDEL SAFE

NOTE: THESE DRAWINGS REPRESENT TYPICAL EQUIPMENT PURCHASED THROUGH DOCTOR'S ASSOCIATES INC. AND DOES NOT REPRESENT ANY EQUIPMENT PURCHASED LOCALLY BY THE FRANCHISEE/OWNER. OWNERS OF STORES OUTSIDE THE UNITED STATES AND CANADA MAY NEED ALTERNATE ELECTRICAL REQUIREMENTS. CONTACT YOUR DAI COORDINATOR OR THE MANUFACTURER FOR THE MODIFIED ELECTRICAL SPECIFICATIONS.

STORE MUST BE CONSTRUCTED AS DESIGNED IN THESE FLOOR PLANS SUBJECT TO FEDERAL, STATE AND LOCAL LAWS. RECIPIENT IS RESPONSIBLE FOR ENSURING COMPLIANCE WITH ALL LAWS. IF MODIFICATIONS ARE NECESSARY, PLEASE CONTACT THE FWH STORE DESIGN DEPARTMENT FOR WRITTEN APPROVAL OF THE REQUIRED CHANGES.

THIS DRAWING IS FURNISHED BY FWH ON BEHALF OF DOCTORS ASSOCIATES INC. (DAI) DBA SUBWAY. RECIPIENT MUST DETESTIFY IF THIS DRAWING MUST BE SUBMITTED TO A LICENSED ARCHITECT OR SIMILAR PROFESSIONAL UNDER FEDERAL, STATE OR LOCAL LAW. ANY CHANGES MUST BE APPROVED BY DAI.

DO NOT SCALE DRAWING. WRITTEN DIMENSIONS TAKE PRECEDENCE OVER SCALED DIMENSIONS AND SHALL BE VERIFIED IN THE FIELD BY THE GENERAL CONTRACTOR AND/OR FRANCHISEE/OWNER. ANY DISCREPANCY IN DIMENSIONS SHALL BE BROUGHT TO THE IMMEDIATE ATTENTION OF DAI AREA DEVELOPMENT AGENT OR DESIGNATED FIELD REPRESENTATIVE.

THE GENERAL CONTRACTOR AND EACH SUB-CONTRACTOR SHALL MAKE HIS OWN INSPECTIONS AND MEASUREMENTS. DAI SHALL NOT BE HELD RESPONSIBLE FOR THE ACCURACY OF DIMENSIONS AND FOR ERRORS AND OMISSIONS IN THE DRAWINGS IF WRITTEN CONFIRMATION HAD NOT BEEN RECEIVED BY THE FWH STORE DESIGN DEPARTMENT.

THIS DRAWING AND THE INFORMATIONAL CONTENT HEREOF IS THE CONFIDENTIAL PROPERTY OF DAI AND IS PROVIDED SOLELY FOR THE USE OF AUTHORIZED FRANCHISEES. THEIR AGENTS AND CONTRACTORS. RECIPIENT AGREES NOT TO REPRODUCE, COPY, USE OR TRANSMIT THIS DRAWING AND/OR ITS INFORMATIONAL CONTENT, IN WHOLE OR IN PART, OR TO ALLOW SUCH ACTION BY OTHERS, FOR ANY PURPOSE, EXCEPT WITH THE WRITTEN PERMISSION OF DAI OR FWH ACTING ON BEHALF OF DAI. RECIPIENT FURTHER AGREES TO SURRENDER THIS DRAWING AND ANY PERMITTED COPIES HEREOF UPON DEMAND.

**WORLD HEADQUARTERS**  
(203) 877-4281  
(800) 888-4848  
325 BIC DRIVE  
MILFORD, CT 06461

**TUSCANY II DECOR BACK-UP SHEET**

REVISION:	BY:	DATE:
ADDED DUKE DIGITAL BREAD OVEN/PROOFER	PMR	2/2/02
UPDATED ELECTRICAL FRONT COUNTER INFO	PMR	4/15/03
ADDED BREAK RACK OPTIONS	PMR	5/1/03
ADDED BUNN TEA & COFFEE BREWER	PMR	6-29-03

DATE:	10-31-08
DESIGNED BY:	PATRICK ROSE
DRAWN BY:	PMR
REVIEWED BY:	PMR

SCALE: NOT TO SCALE

SHEET #:  
**4 of 4**