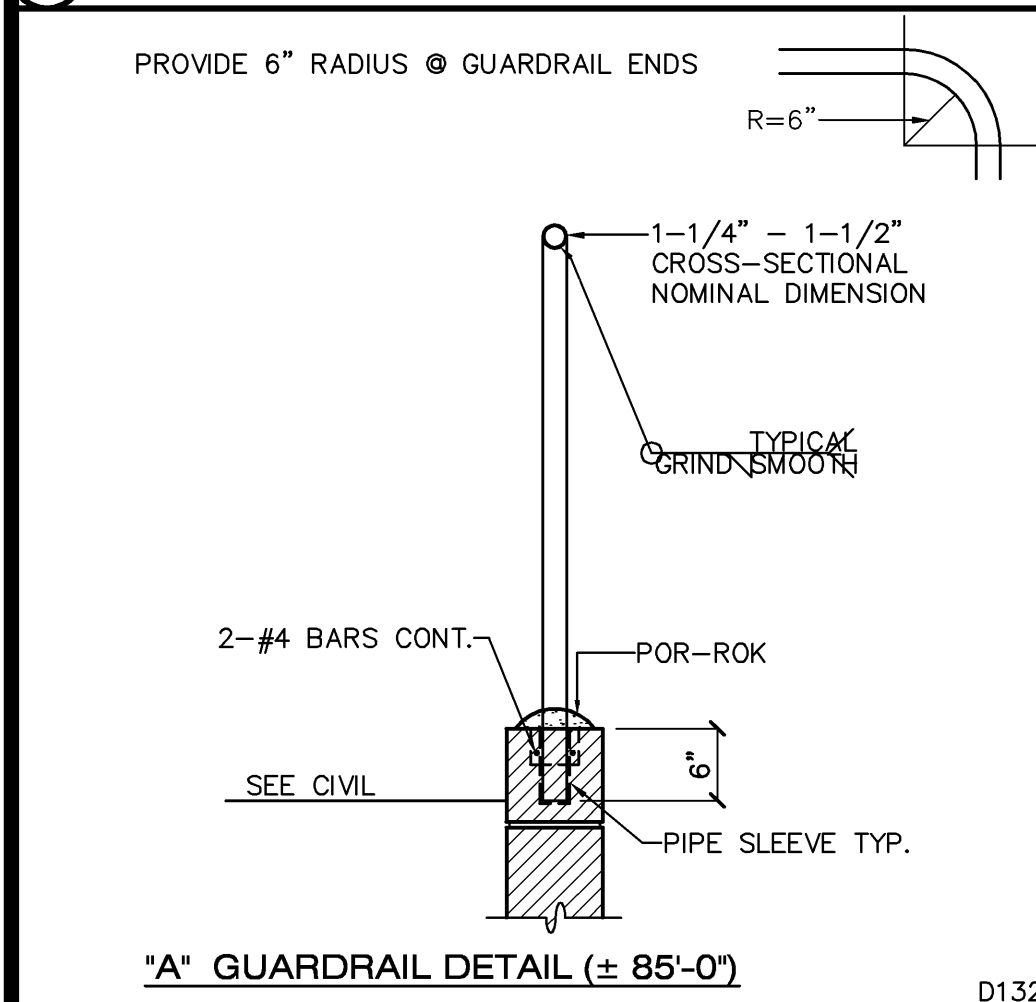
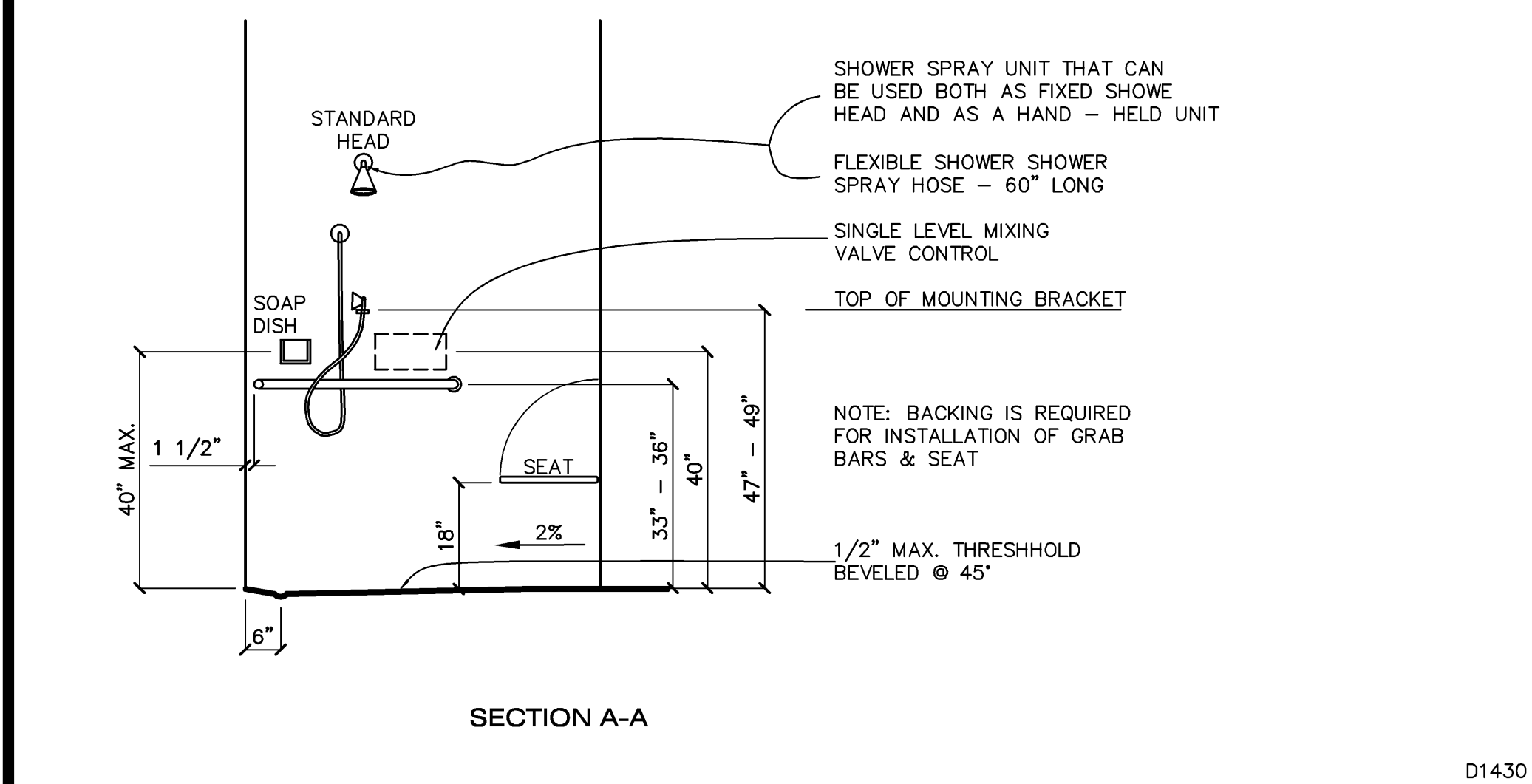
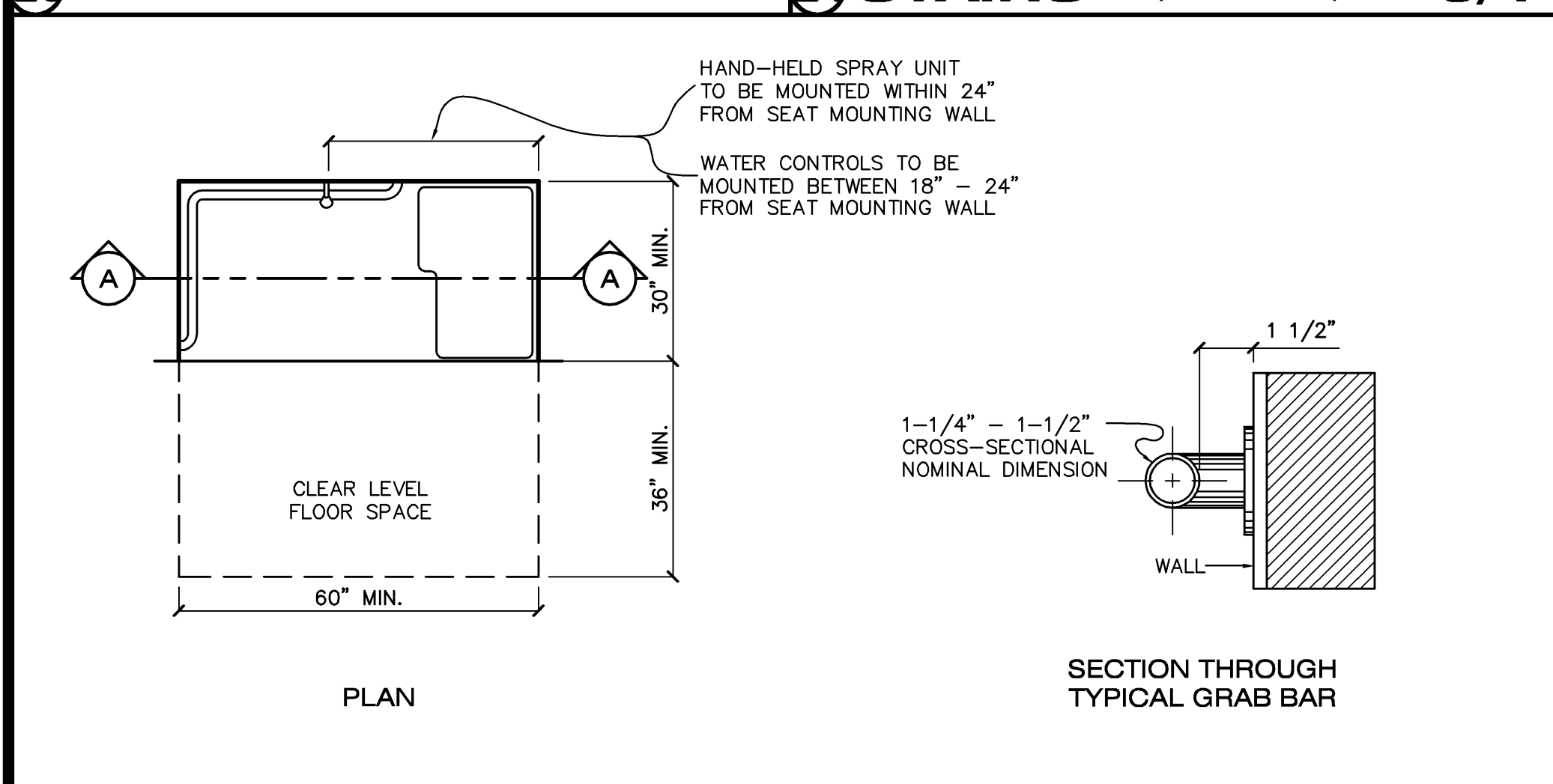


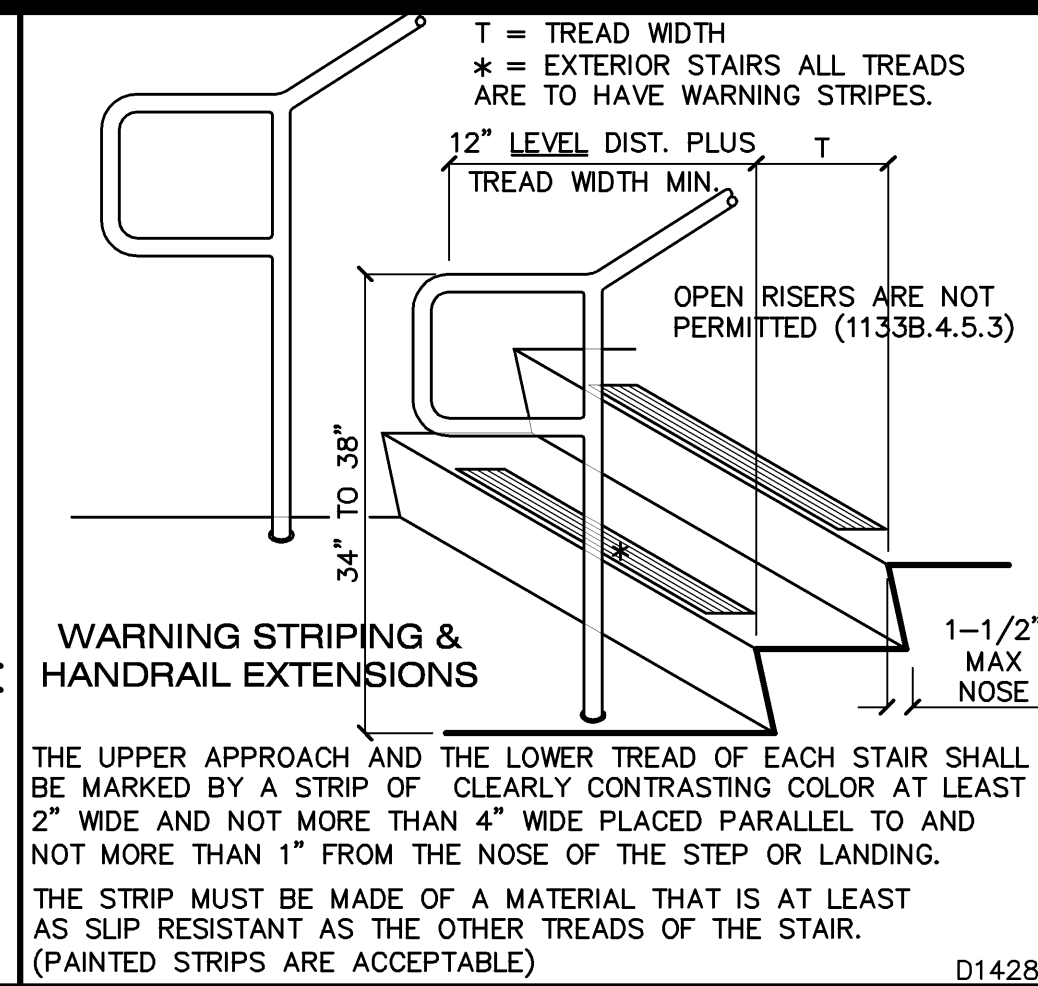
25 RAMP DETAIL 3/8"



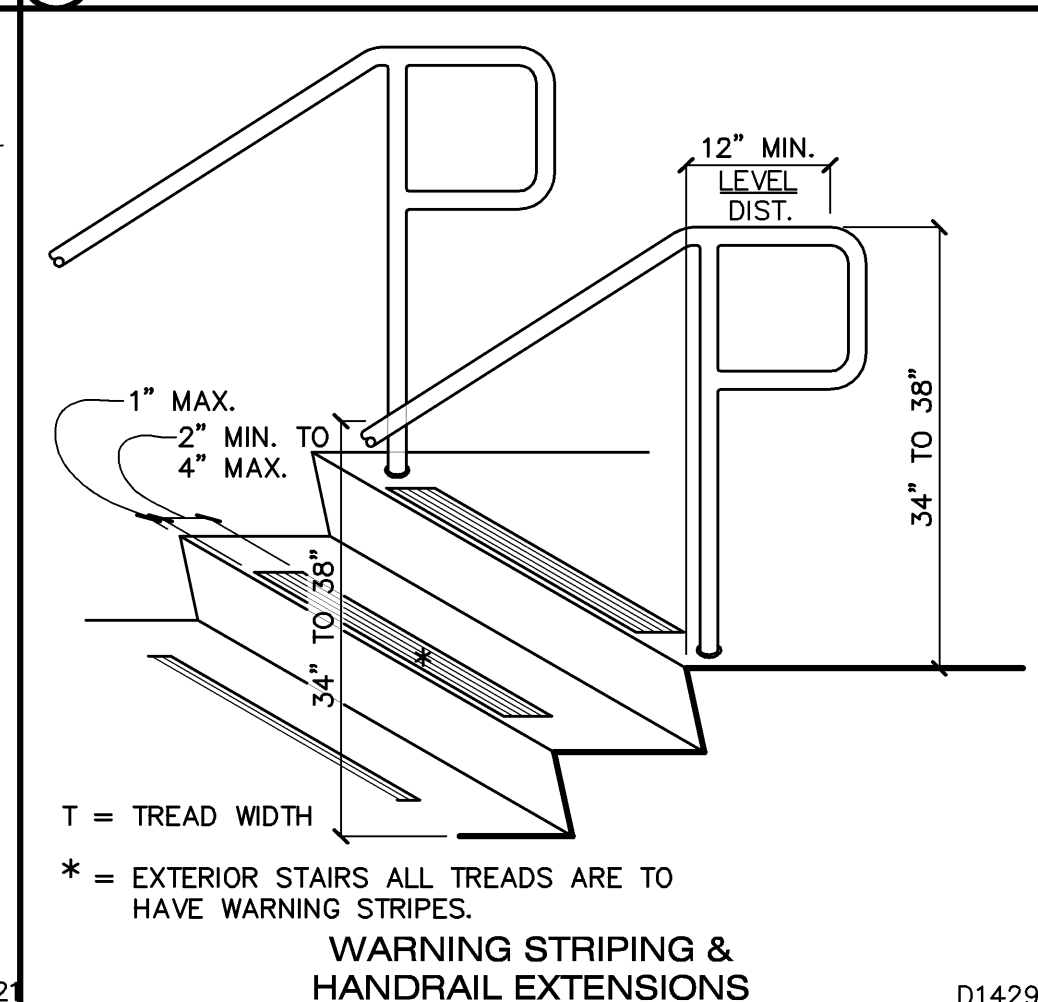
26 GUARDRAIL DETAIL 3/4"



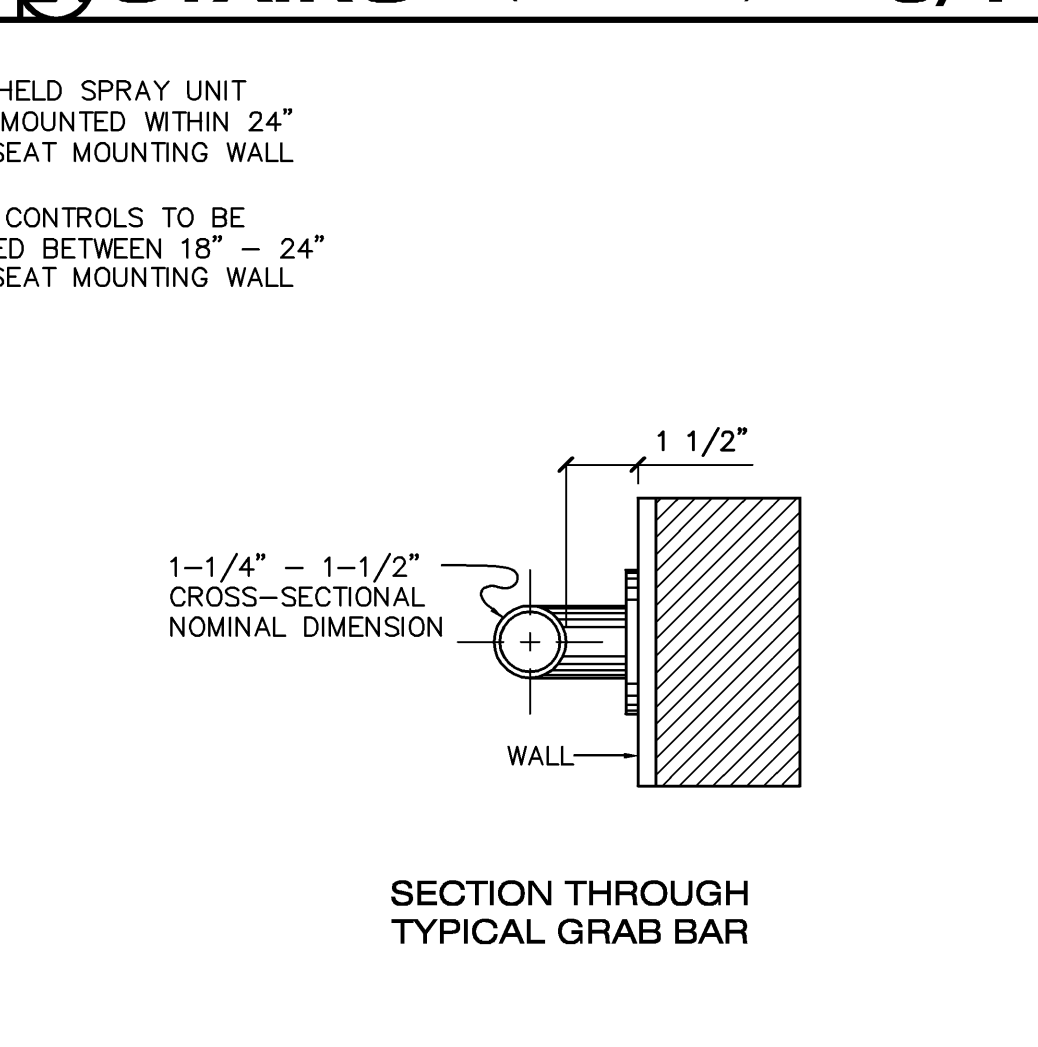
27 SINGLE STALL HANDICAPPED SHOWER 1/2"



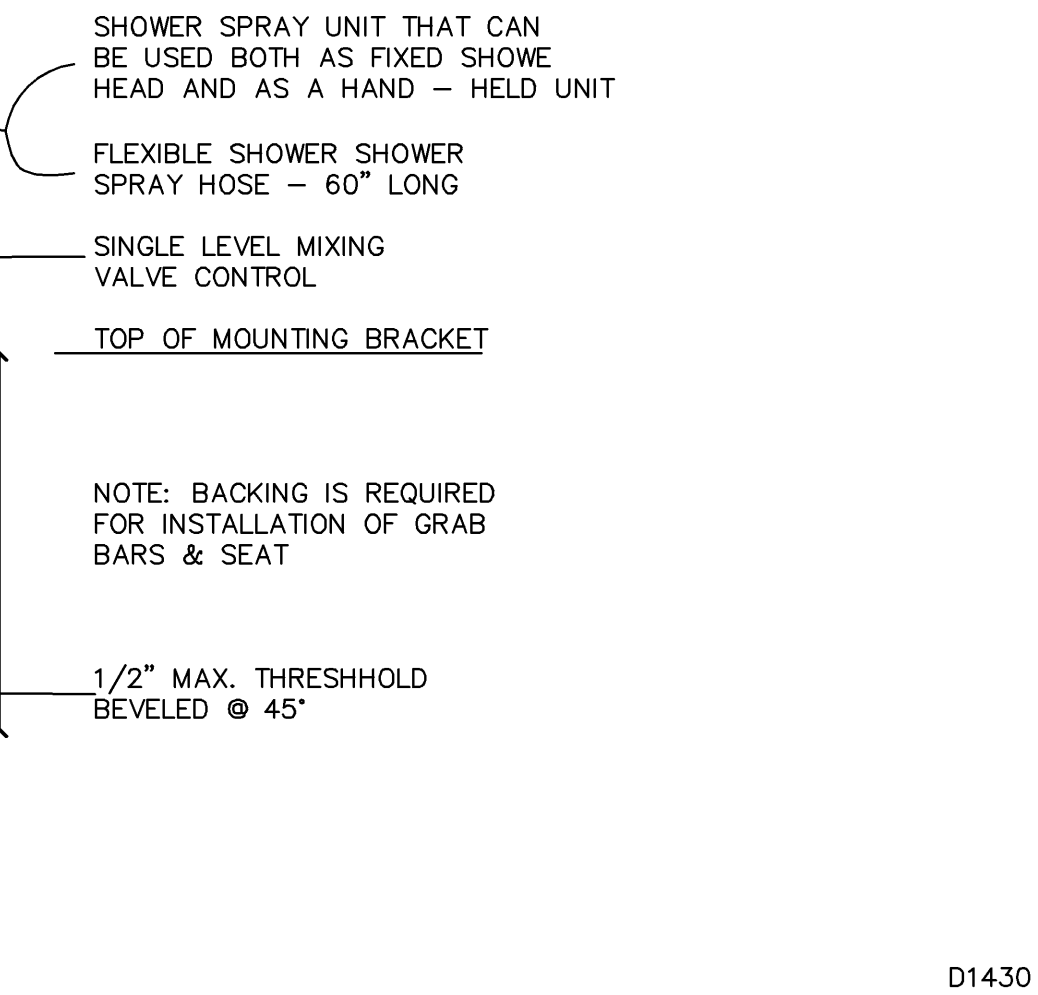
29 STAIRS (BOTTOM OF RUN) 3/4"



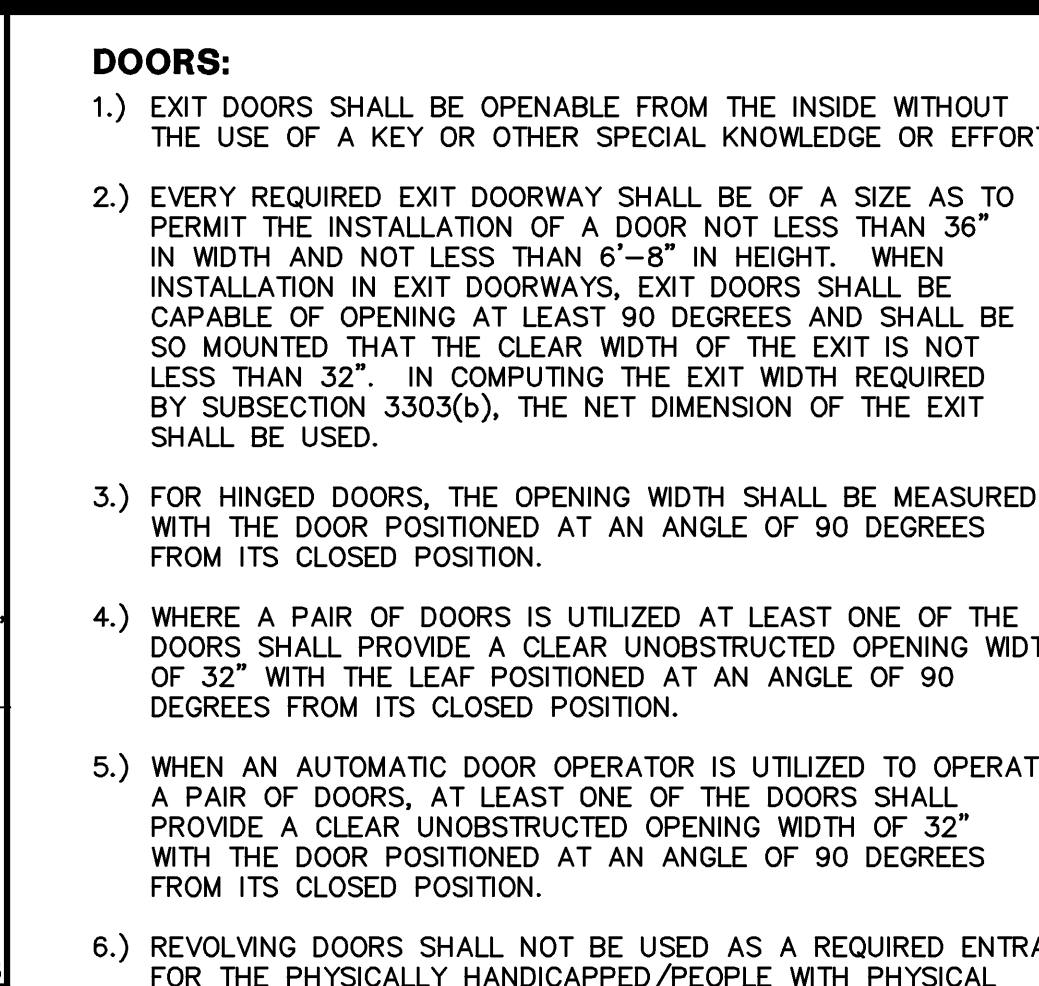
30 STAIRS (TOP OF RUN) 3/4"



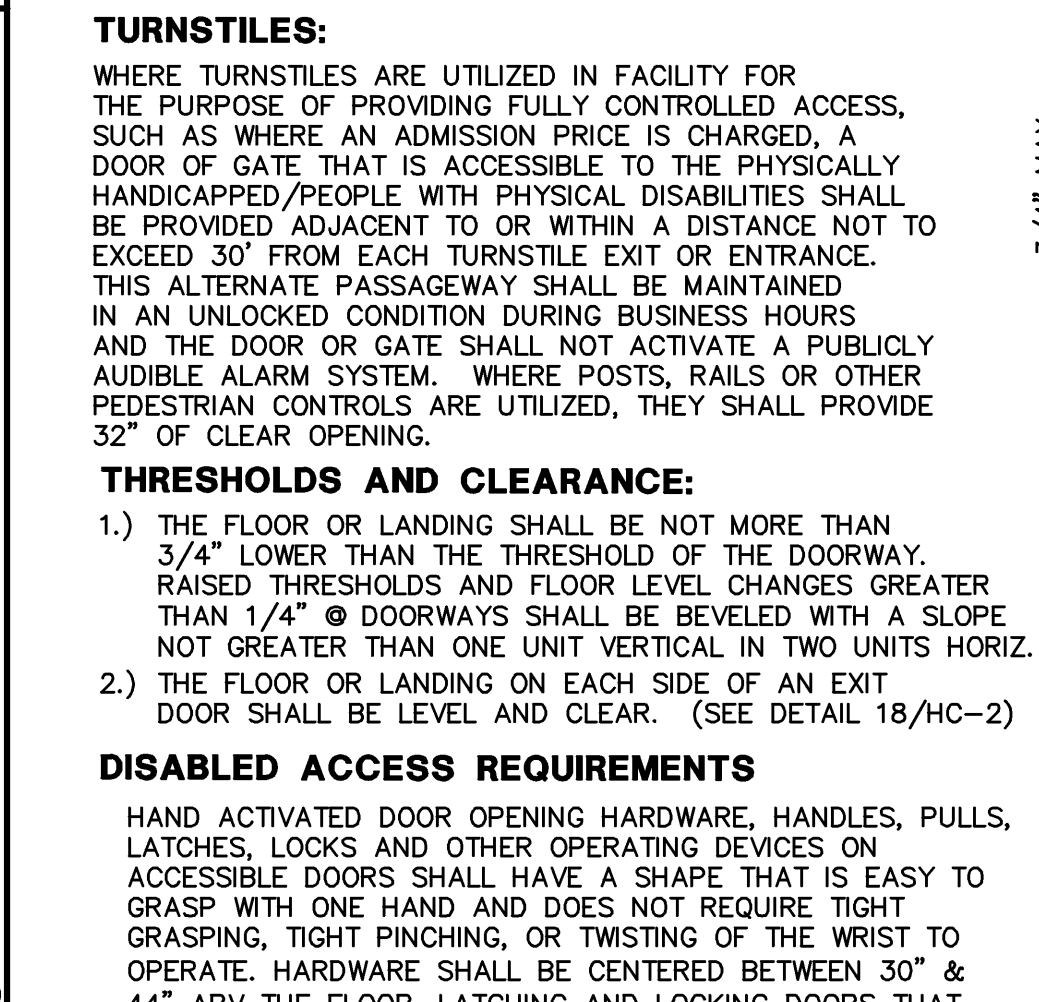
31 DOOR CONSTRUCTION, THRESHOLD, HARDWARE & CLOSERS



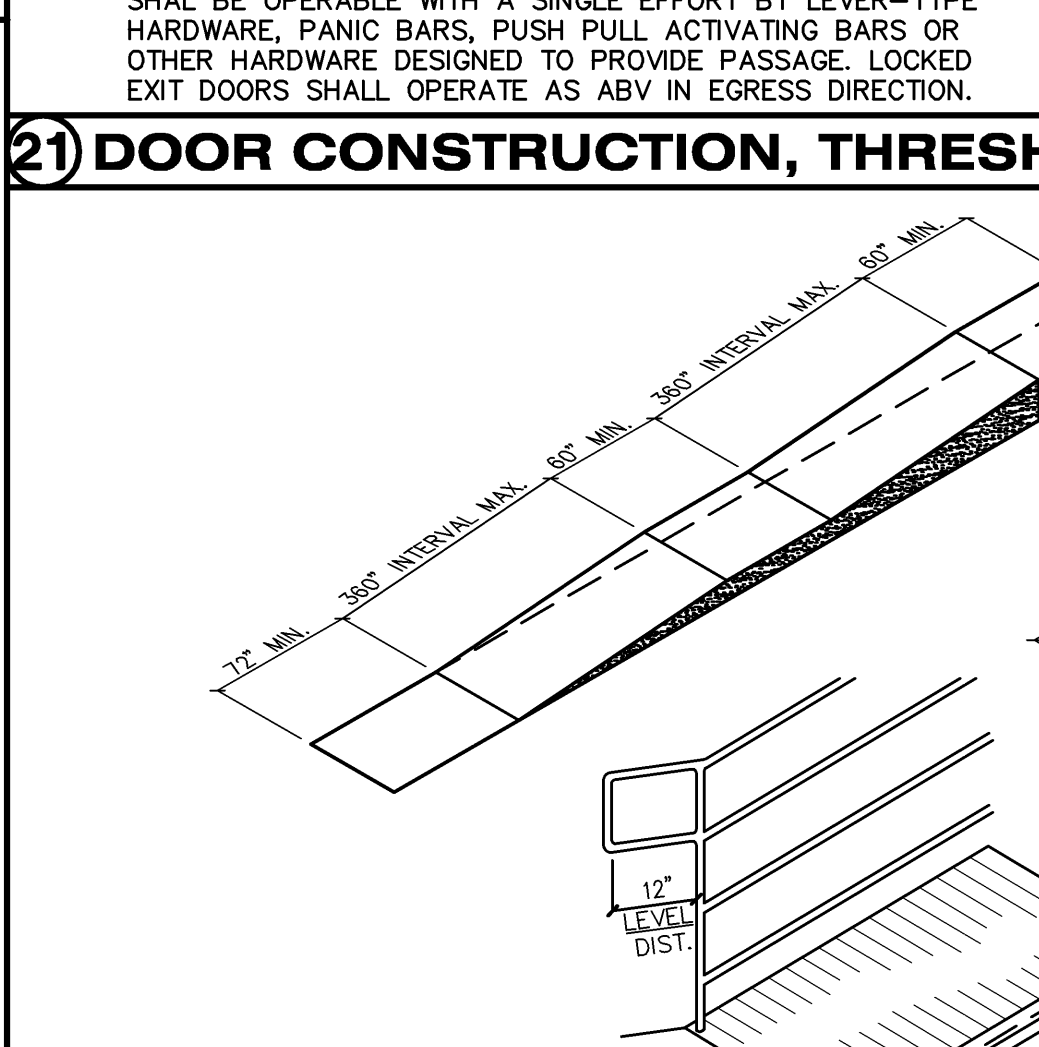
32 RAMP NOTES



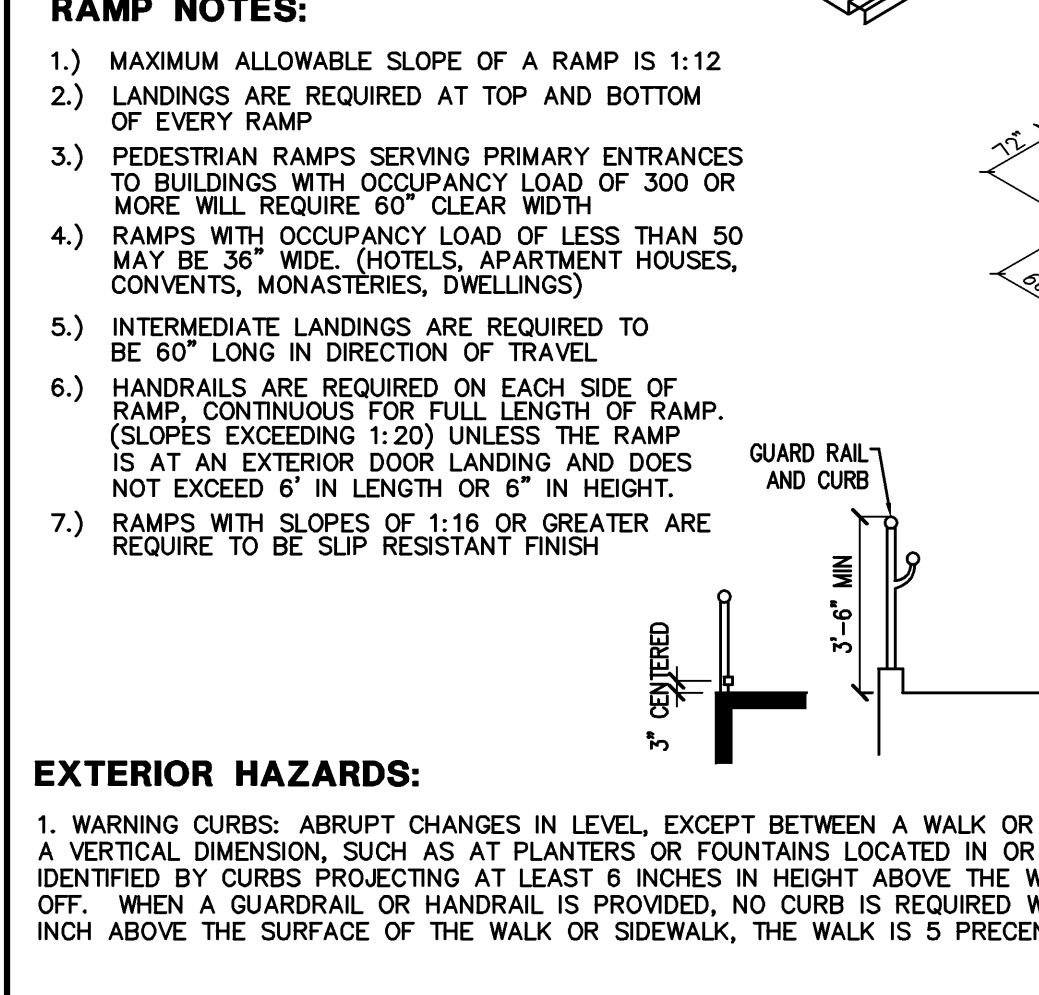
33 DOORS



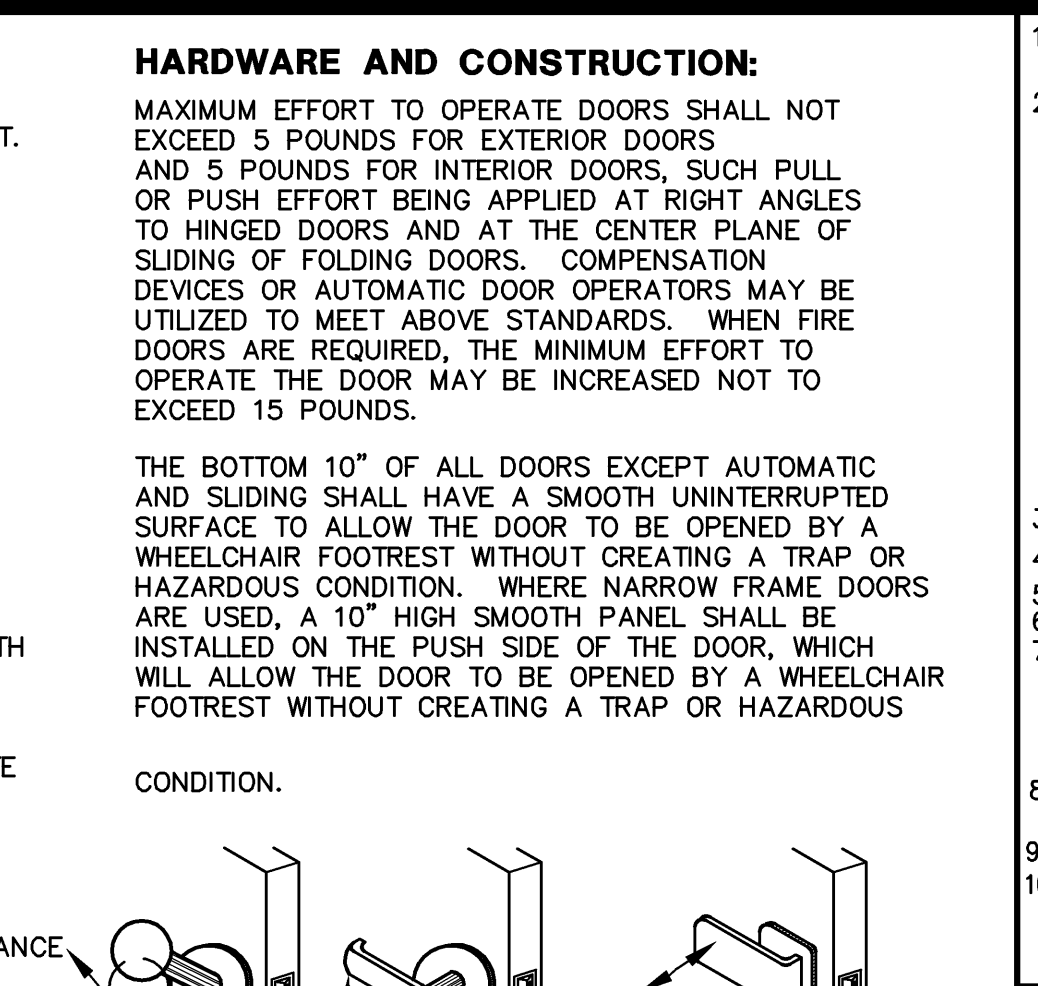
34 TURNSTILES



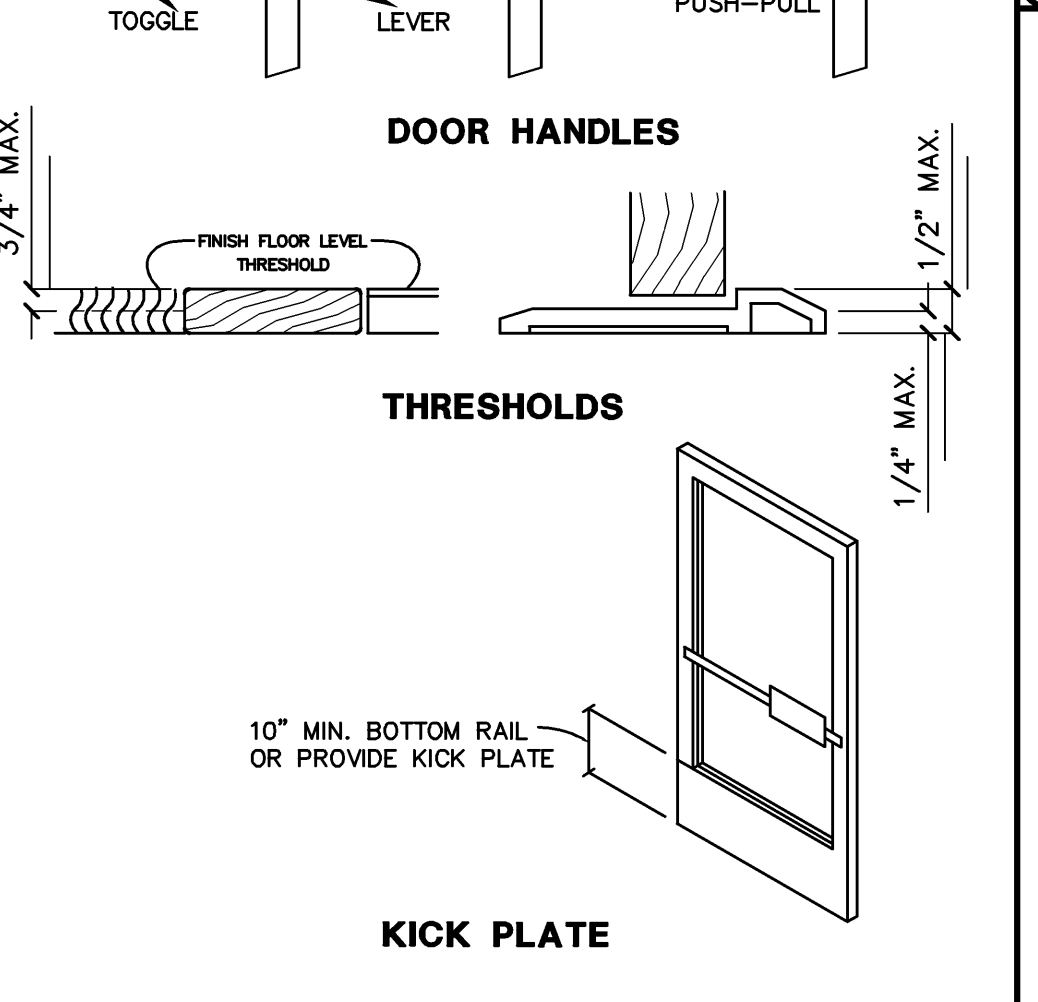
35 DISABLED ACCESS REQUIREMENTS



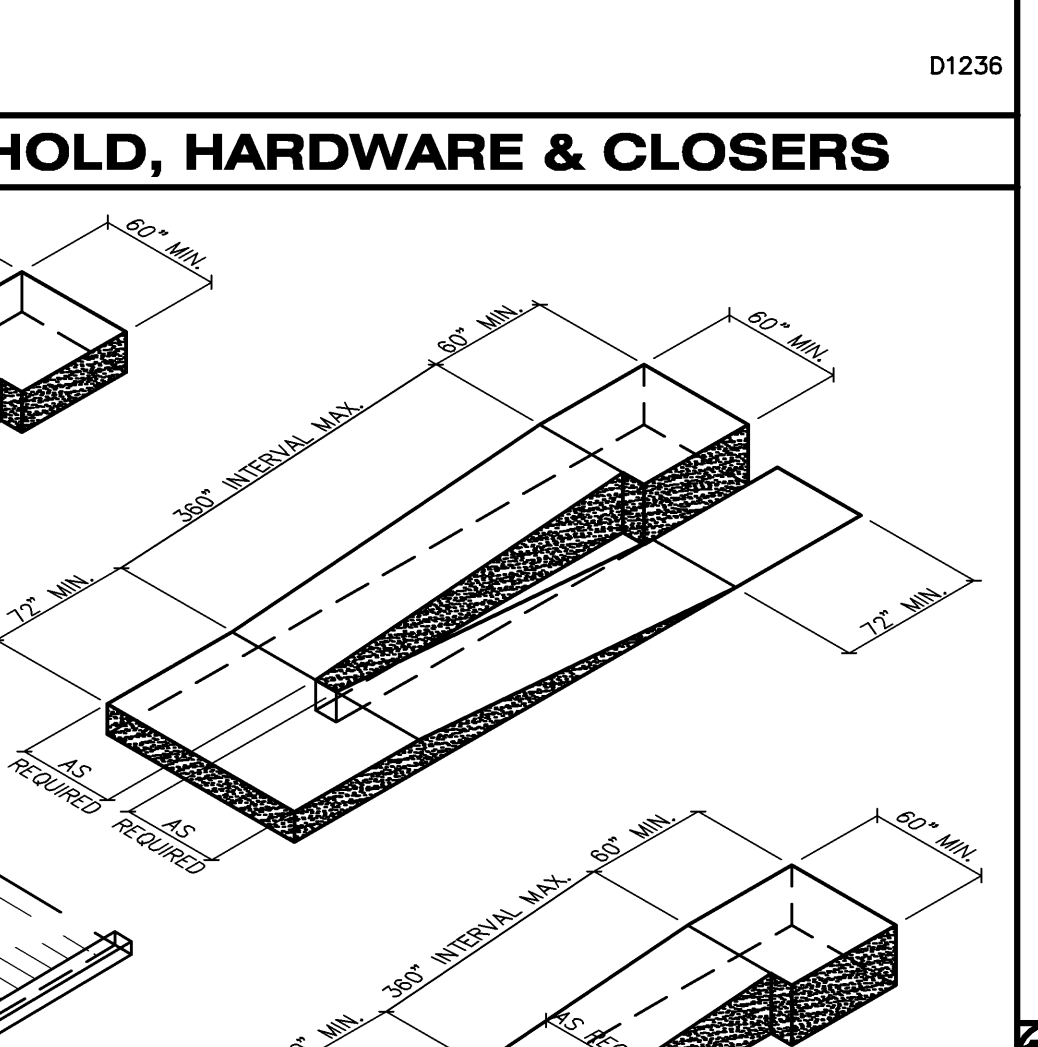
36 EXTERIOR HAZARDS



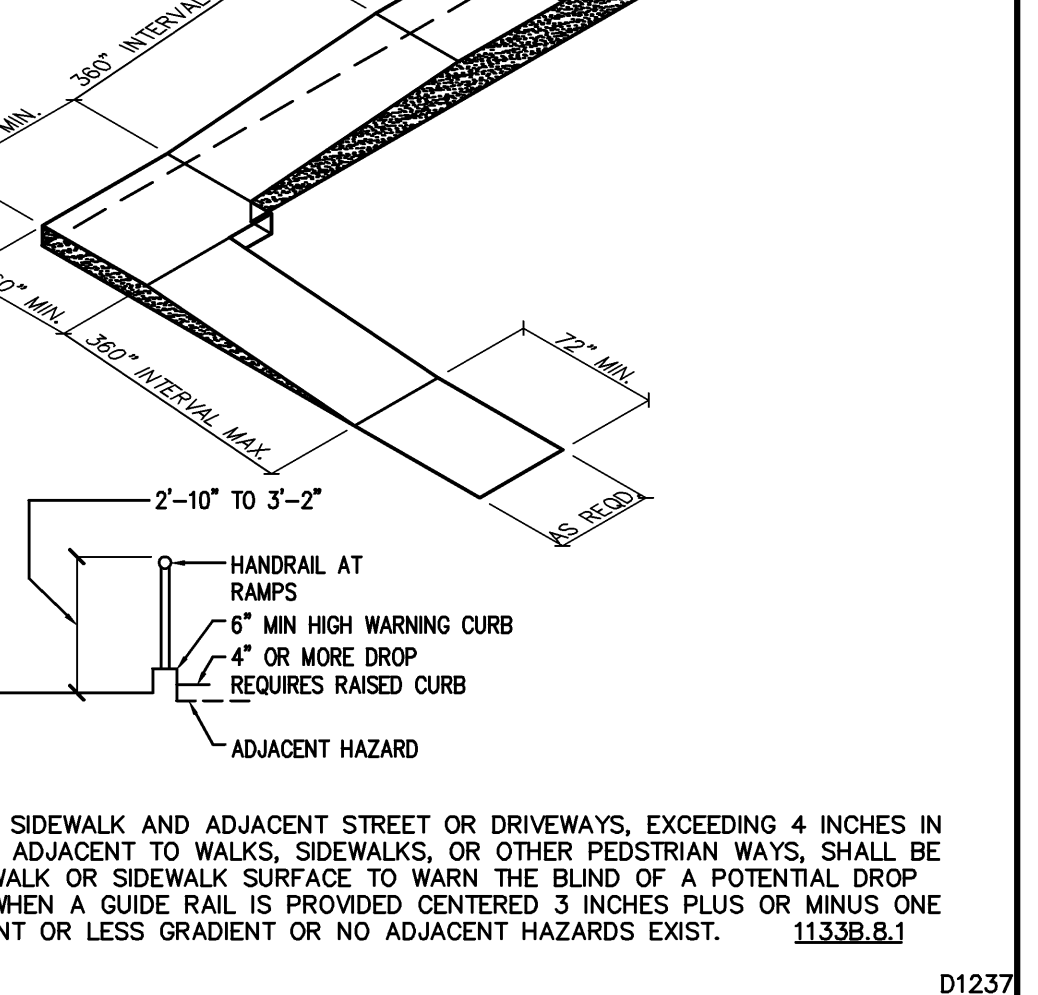
37 HARDWARE AND CONSTRUCTION



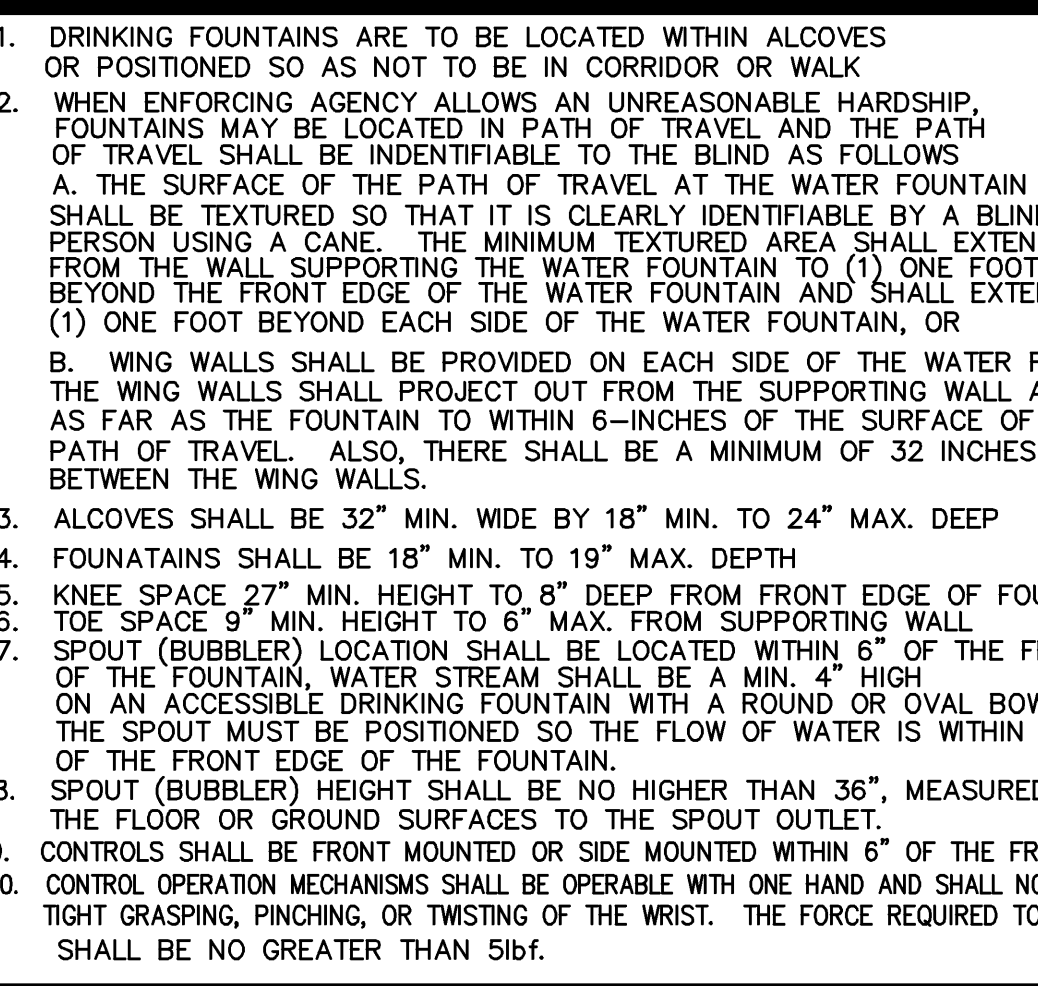
38 DOOR HANDLES



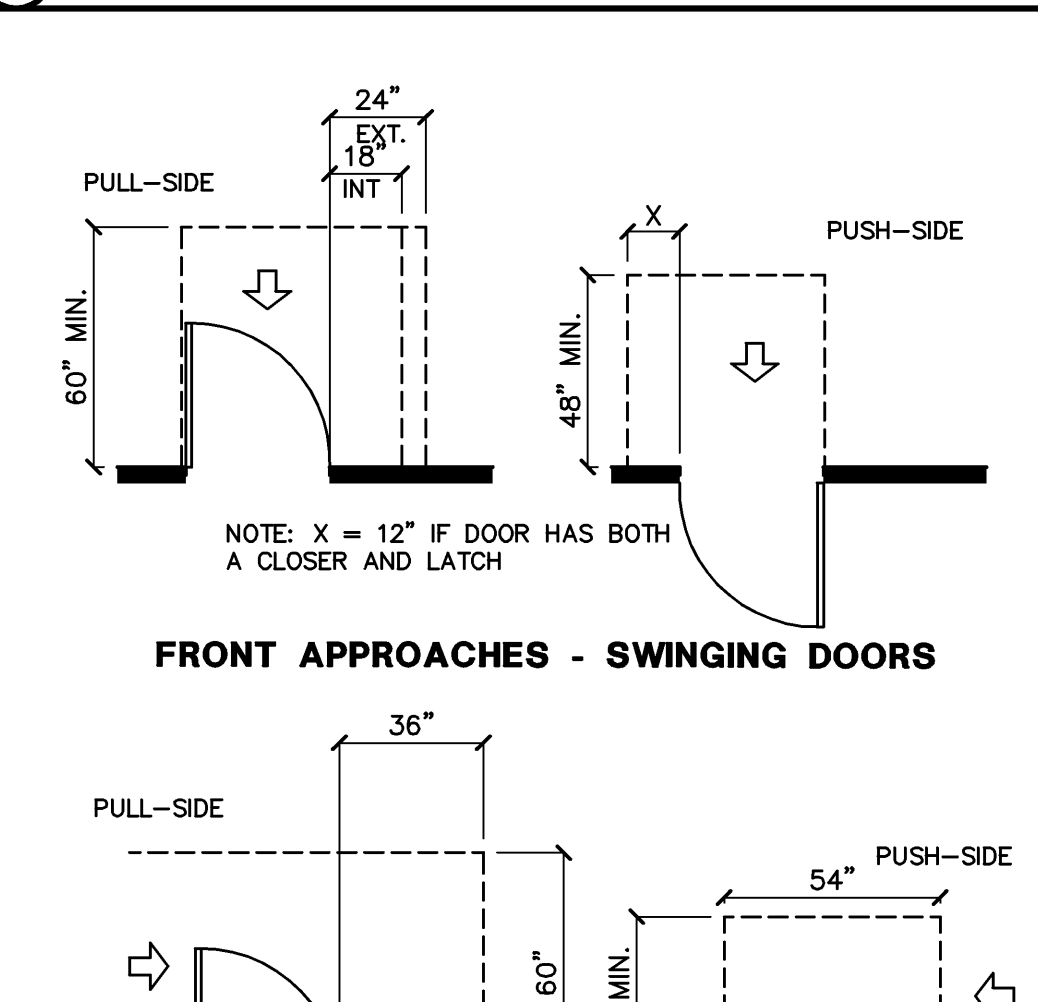
39 THRESHOLDS



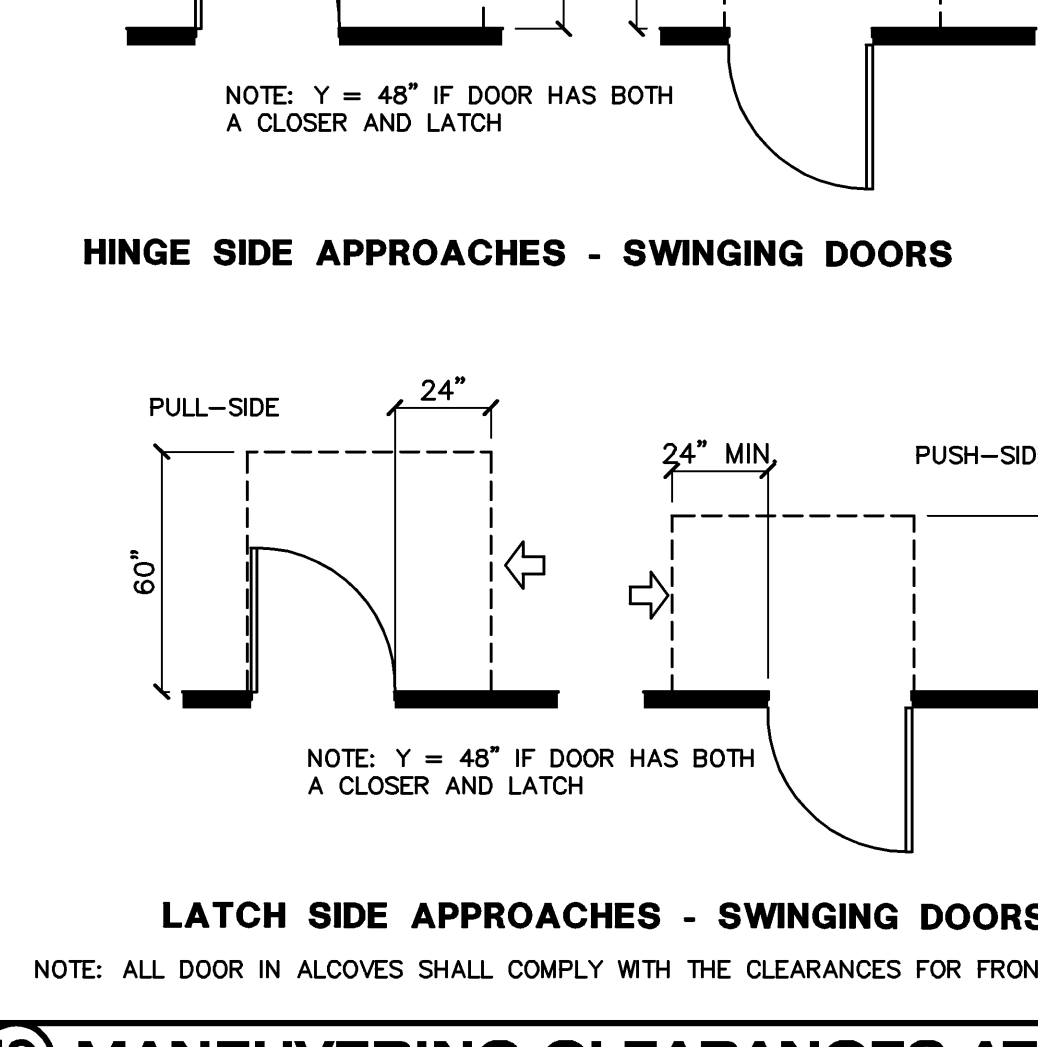
40 KICK PLATE



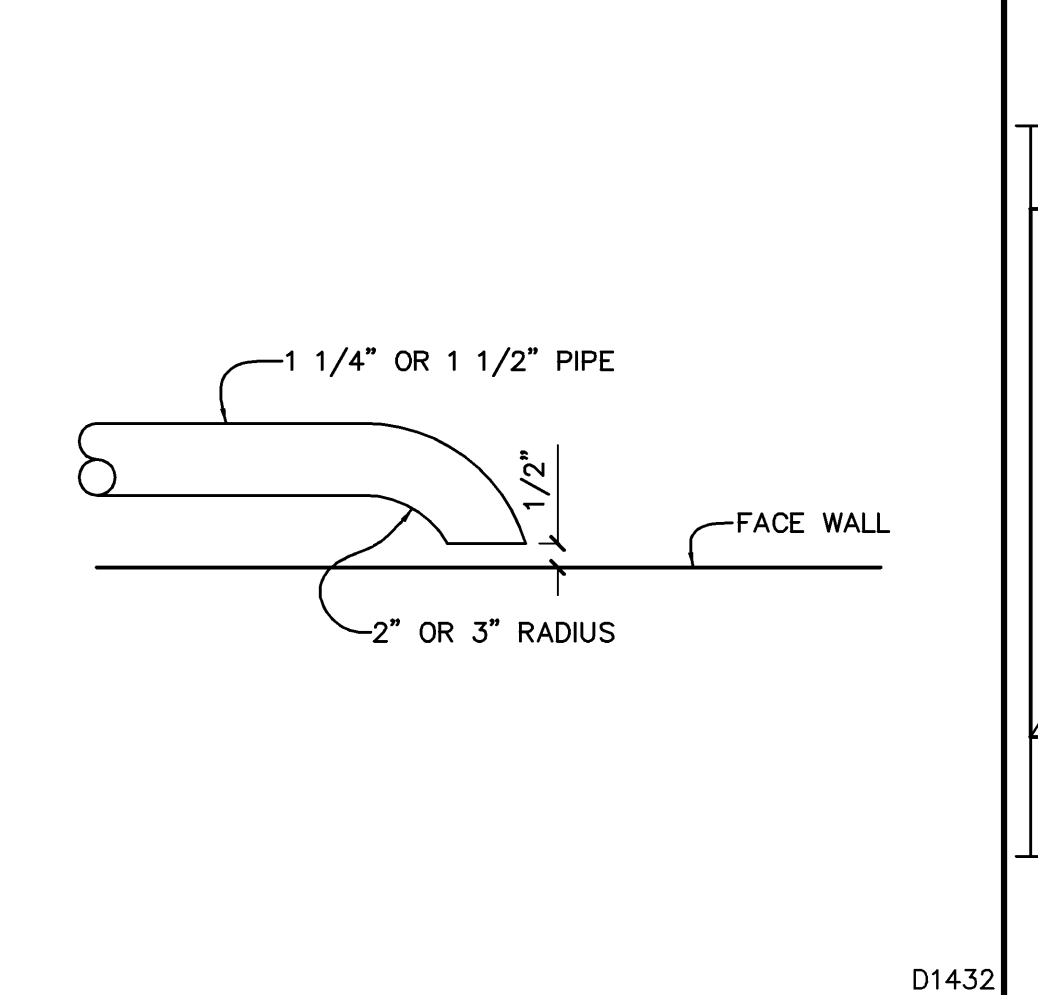
41 DRINKING FOUNTAINS AND WATER COOLERS 1/4"



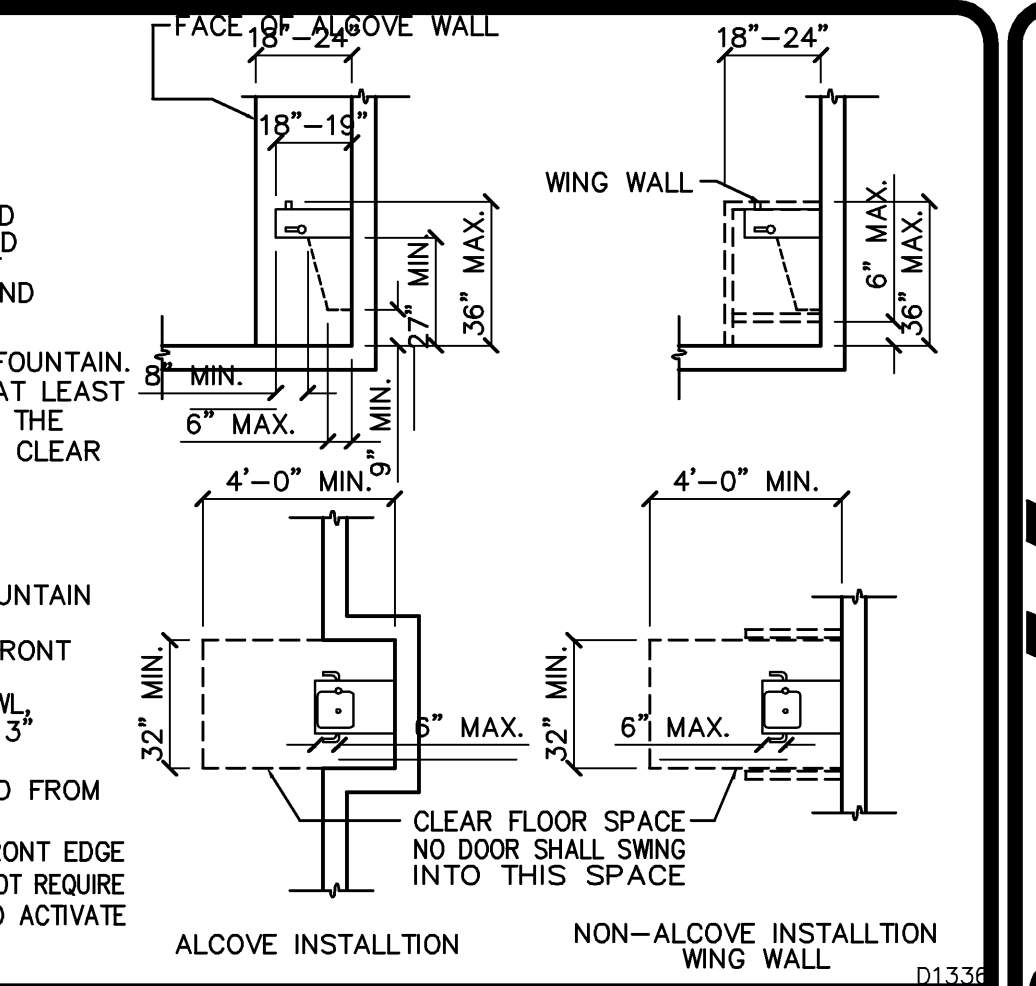
42 FRONT APPROACHES - SWINGING DOORS



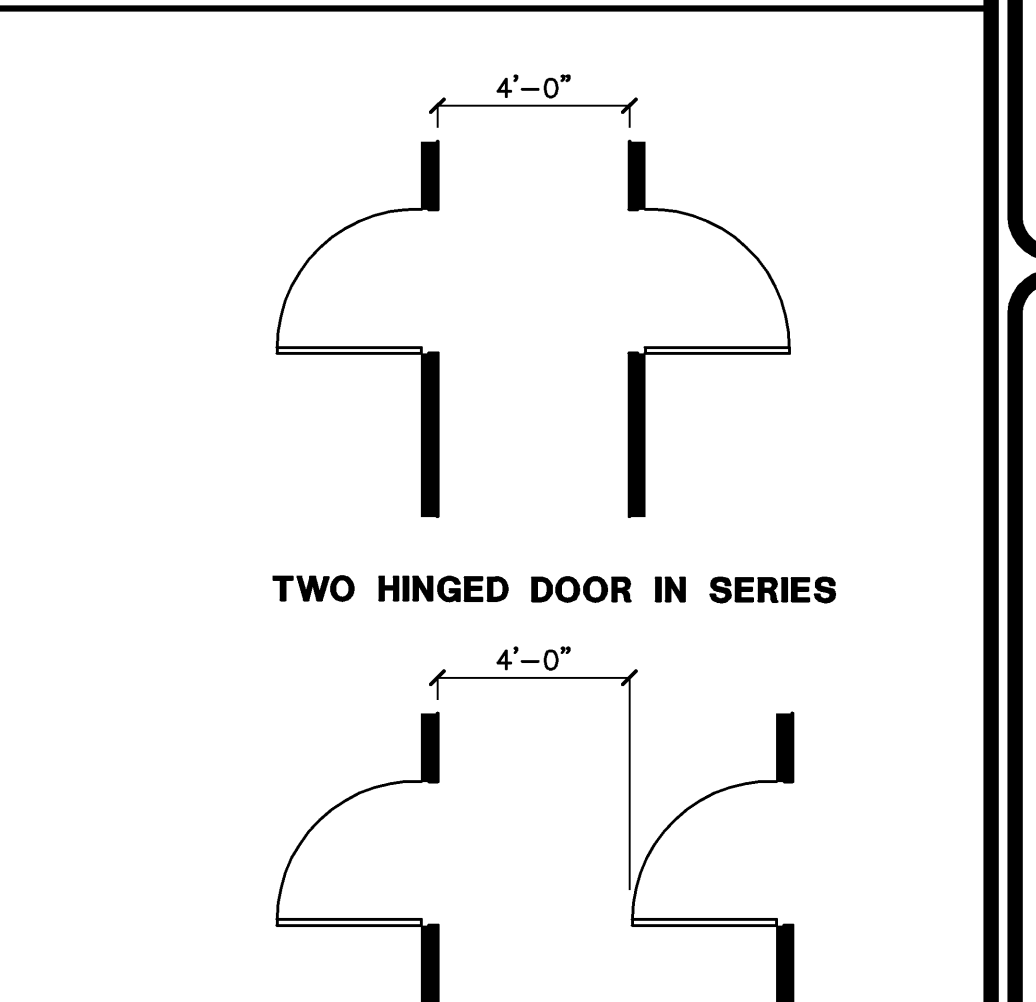
43 HINGE SIDE APPROACHES - SWINGING DOORS



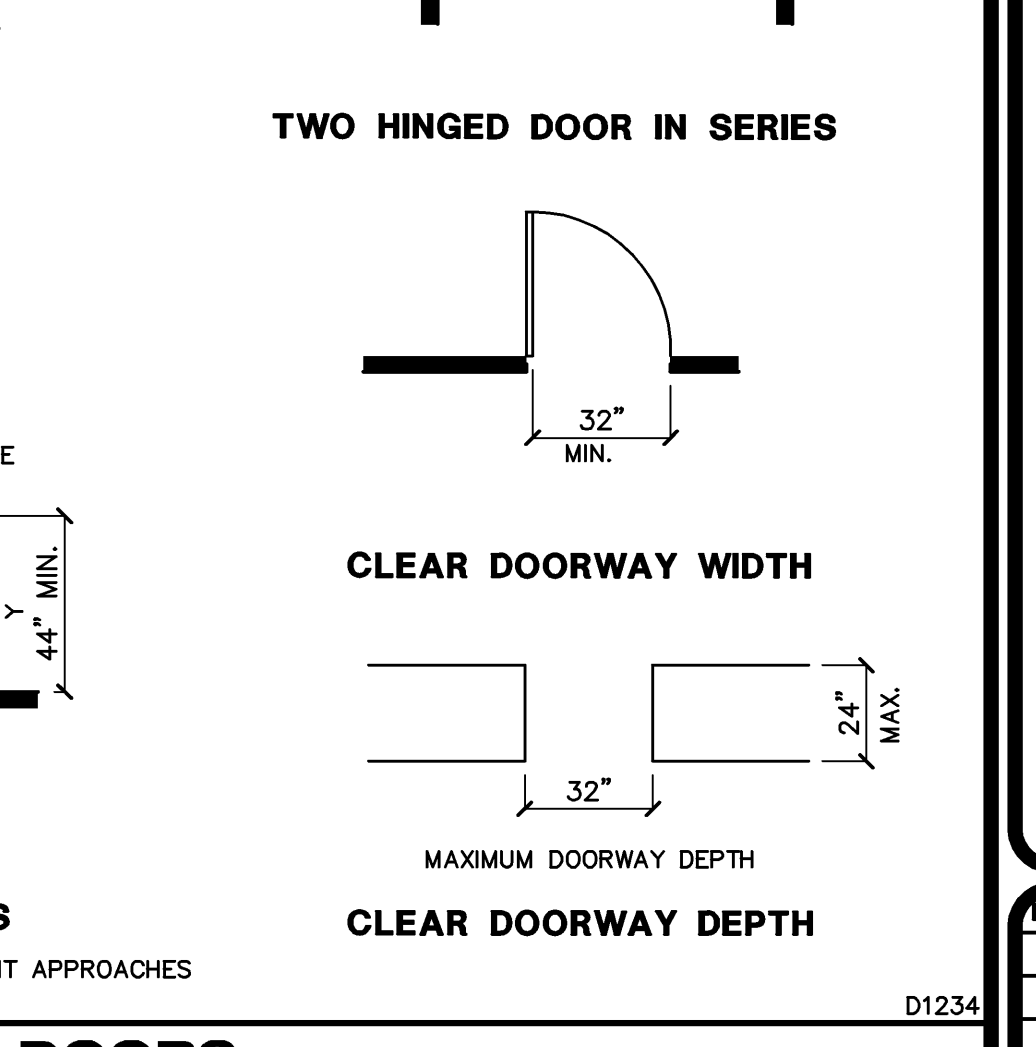
44 LATCH SIDE APPROACHES - SWINGING DOORS



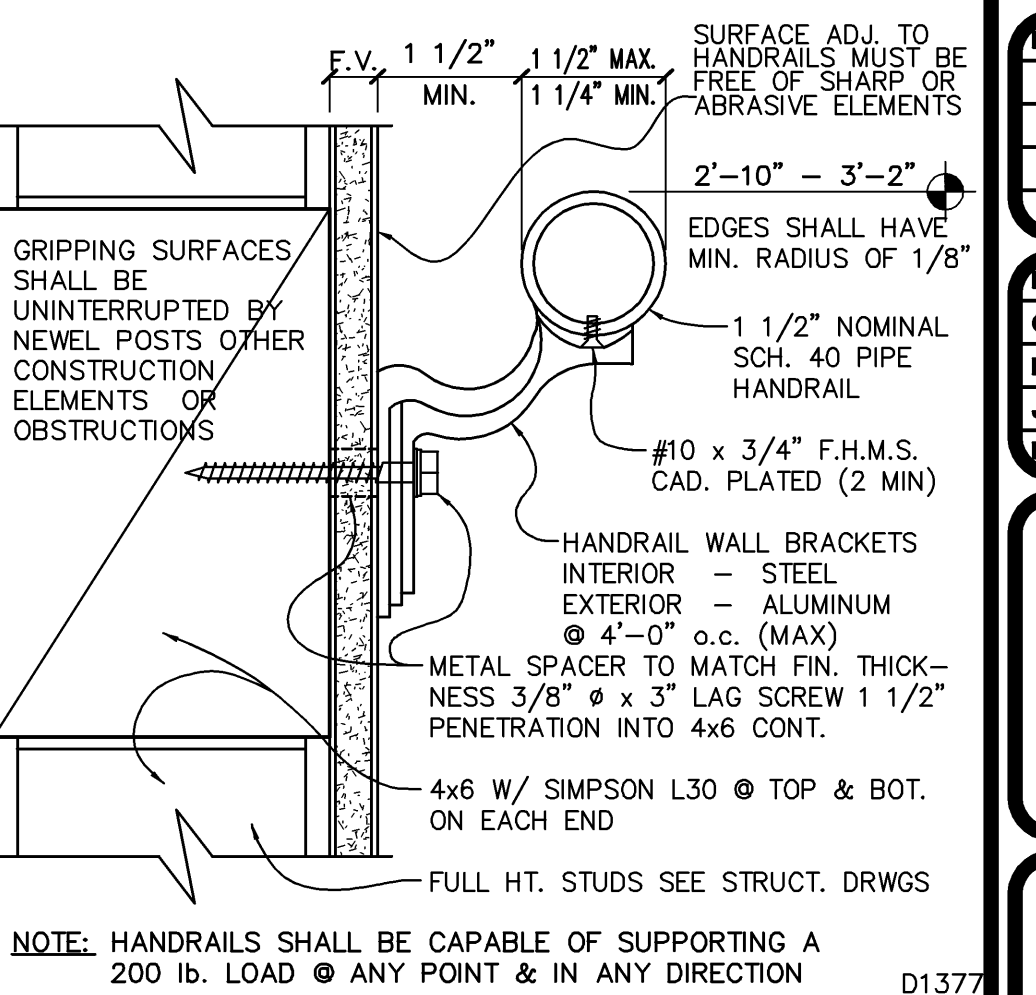
45 TWO HINGED DOOR IN SERIES



46 TWO HINGED DOOR IN SERIES

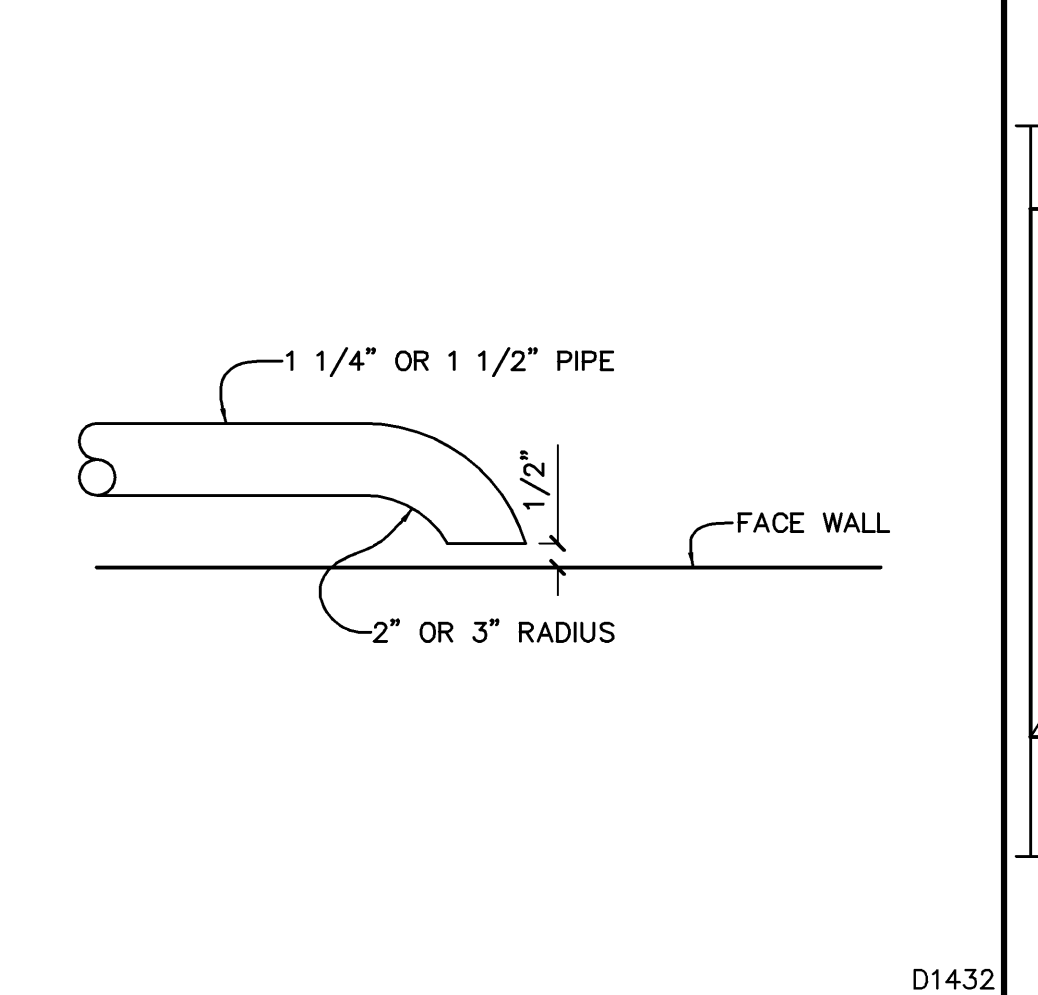


47 CLEAR DOORWAY WIDTH

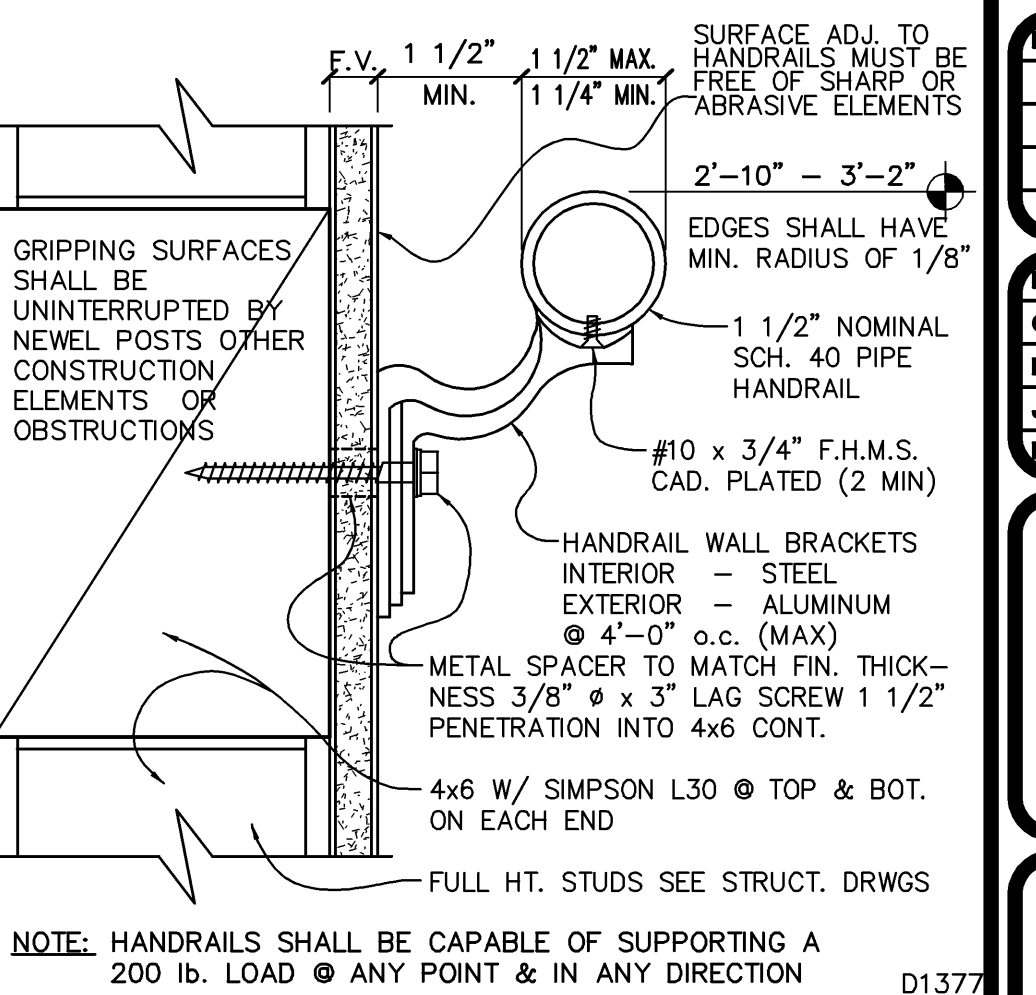


48 CLEAR DOORWAY DEPTH

18) MANEUVERING CLEARANCES AT DOORS



49 MANEUVERING CLEARANCES AT DOORS



50 HANDRAIL TURN IN @ END

Pasquini Engineering
 Marc A. Pasquini Civil Engineer
 Telephone: (661) 328-9600
 Fax: (661) 328-9030
 903 "H" Street, Suite 300
 Bakersfield, CA 93304

DATE	ISSUED

DATE	MARK	ISSUED

DWG. BY	CHK'D BY	DATE	JOB NO.	FILE NO.
		4/28/09		HC-2

SHEET	HC-2	SHEET
-------	------	-------