

EQUIPMENT SCHEDULE

AC 01	EXISTING 5 TON GAS HEAT & ELECTRIC COOL, 83,000 BTUH GAS INPUT 208v, 1P, 34 FLA 1100 lbs. W/ ROOF CURB 12 SEER W/ SMOKE DETECTOR IN SUPPLY AIR DUCT
AC 02	EXISTING 5 TON GAS HEAT & ELECTRIC COOL, 83,000 BTUH GAS INPUT 208v, 1P, 34 FLA 1100 lbs. W/ ROOF CURB 12 SEER W/ SMOKE DETECTOR IN SUPPLY AIR DUCT
EF 01	COOL # 500 CFM EXHAUST FAN, W/ 500 CFM AT .5 SP INTERLOCK W/ LIGHT 120V, 1P

ALL EXHAUST FANS TO HAVE VARIABLE SPEED CONTROLLERS MOUNTED IN DOME

MANDATORY NOTES

- ALL DUCTWORK TO BE FLEX
- ALL DUCT ON ROOF TO BE LINED W/ 1" LINER. ALL DIMENSIONS SHOWN ARE NET INSIDE OF DUCTS
- DUCT WORK IN ATTIC TO BE WRAPPED W/ HIGH PRESSURE DUCT SEALANT AND WRAPPED W/ 2" FOIL FACED FIBER GLASS.
- ALL SA & RA DUCT DROPS TO BE 24 GA.
- AIR BALANCE TO BE PERFORMED AT END OF PROJECT
- SEE ARCHITECTURAL PLANS FOR EXACT UNIT LOCATION / ORIENTATION
- ALL GRILLES TO BE ANEMOSTAT RMD-FP & GC50 WITH A NC RATING NOT TO EXCEED 25 NC (DO NOT USE OBD'S)
- ALL UNITS TO OPERATE (1) HOUR BEFORE OPENING & CONTINUOUSLY DURING OCCUPIED MODE.

- ① HONEYWELL T7350 STAT W/ LOCKING COVER & RA SENSOR TO PROGRAM FAN TO OPERATE (1) HOUR BEFORE OCCUPIED MODE & RUN CONTINUOUSLY DURING BUSINESS HOURS
- Ⓡ SMOKE DETECTOR MANUAL RESET CONTROLLER TYPICAL PER AC UNIT MOUNT ADJACENT TO STAT.

"THE INTENT OF THE DRAWINGS AND SPECIFICATIONS IS TO CONSTRUCT THIS PROJECT IN ACCORDANCE WITH TITLE 24, CALIFORNIA ADMINISTRATIVE CODE. SHOULD ANY CONDITIONS DEVELOP NOT COVERED BY THE CONTRACT DOCUMENTS WHEREIN THE FINISHED WORK WILL NOT COMPLY WITH SAID TITLE 24, CALIFORNIA ADMINISTRATIVE CODE, A CHANGE ORDER DETAILING SPECIFICATIONS REQUIRED WORK SHALL BE SUBMITTED TO AND APPROVED BY OSHRD BEFORE PROCEEDING WITH THE WORK"

AIR CONDITIONING SPECIFICATION

- PROVIDE COMPLETE AIR CONDITIONING SYSTEMS INCLUDING ALL AIR CONDITIONING UNITS, DUCTWORK, INSULATION AND CONTROLS.
- ALL SYSTEMS TO BE IN ACCORDANCE WITH GOVERNING CODES AND ORDINANCES AND APPROVED BY GOVERNING INSPECTION AGENCIES. OBTAIN ALL PERMITS AND PAY ALL FEES.
- DUCTWORK TO BE FABRICATED OF FLEX OR GALV STEEL IN ACCORDANCE WITH THE CALIFORNIA MECHANICAL CODE (OR SMACNA DUCT CONSTRUCTION MANUAL IF PRESSURE CLASS IS DESIGNATED)
- ALL SUPPLY AND RETURN AIR DUCTS SHALL BE LINED FROM UNIT TO A MINIMUM OF 15 FEET AND WITH NOT LESS THAN 3 POUND UNIT COATED GLASS FIBER LINING (SEE DUCT LINING NOTES). (OR AS SHOWN ON PLAN, SEE DUCT LINING NOTES).
- RECTANGULAR DUCTWORK HAS GENERALLY BEEN SHOWN BECAUSE OF SPACE LIMITATIONS WHICH WILL NOT ALLOW THE USE OF ROUND DUCT. EQUIVALENT SIZED ROUND DUCT WILL BE ALLOWED AT CONTRACTORS OPTION IF IT WILL FIT.
- ALL SQUARE OR RECTANGLE DUCT TURNS FROM 45 DEGREES TO 90 DEGREES INCLUDING VANE, LONG RADIOUS ELBOWS MAY ALSO BE USED. ALL DUCT TRANSITIONS TO BE MADE AS SMOOTH AS POSSIBLE WITH PROPORTIONAL SPLITS. NO CAP AND TAP.
- ALL DUCT TRANSVERSE JOINTS TO BE TAPED AIR TIGHT WITH DUCT TAPE.
- ALL GRAVITY VENTS, EXHAUST FANS, AND O.A. INTAKES SHALL BE EQUIPPED WITH BACKDRAFT DAMPERS. (EXCEPT EXHAUST DUCTS FROM CLASS 1 GREASE HOODS.)
- ALL CONCEALED SUPPLY AND RETURN AIR DUCTS NOT LINED SHALL BE WRAPPED WITH 2" = 3/4 POUND GLASS FIBER DUCT WRAP. (R=7 MIN.)
- SYSTEMS TO BE BALANCED FOR PROPER AIR DELIVERY AND DISTRIBUTION OF HEATING AND COOLING.
- PROVIDE ALL CONTROLS, THERMOSTATS, RELAYS AND CONTACTORS NECESSARY FOR PROPER AND UNINTERRUPTED OPERATION OF THE SYSTEMS. THERMOSTATS SHALL BE TITLE 24 APPROVED.
- VERIFY VOLTAGE AND PHASE AVAILABLE ON JOBSITE WITH ELECTRICAL CONTRACTOR PRIOR TO ORDERING EQUIPMENT.
- PLUMBING CONTRACTOR TO MAKE FINAL GAS CONNECTION TO ALL GAS BURNING EQUIPMENT INCLUDING AIR CONDITIONING AND/OR HEATING EQUIPMENT.
- PLUMBING CONTRACTOR TO FURNISH AND INSTALL SCHEDULE 40 GALVANIZED STEEL GAS PIPING AND STRAIGHT AND ELBOW JOINTS TO PLUMBING SYSTEM. TYPE "L" COPPER MAY ALSO BE USED.

MANDATORY NOTES

- ALL DUCT WORK TO BE FLEX.
- ALL DUCT ON ROOF TO BE LINED W/1" LINER.
- ALL DIMENSIONS SHOWN ARE NET INSIDE OF LINING.
- ALL DUCTWORK IN ATTIC SPACES TO BE SEALED WITH HIGH PRESSURE DUCT SEALANT & WRAPPED W/2" FOIL FACED FIBERGLASS
- AIR BALANCE TO BE NEBB CERTIFIED CO.
- SEE ARCHITECTURAL PLANS FOR EXACT UNIT LOCATION/ ORIENTATION.
- ALL GRILLES TO BE ANEMOSTAT RMD-S & GC50 W/A NC RATING NOT TO EXCEED 25 NC (DO NOT USE OBD'S)
- ALL EXIST UNITS TO BE WIRED FOR CONSTANT OPERATION. DURING OCCUPIED MODE

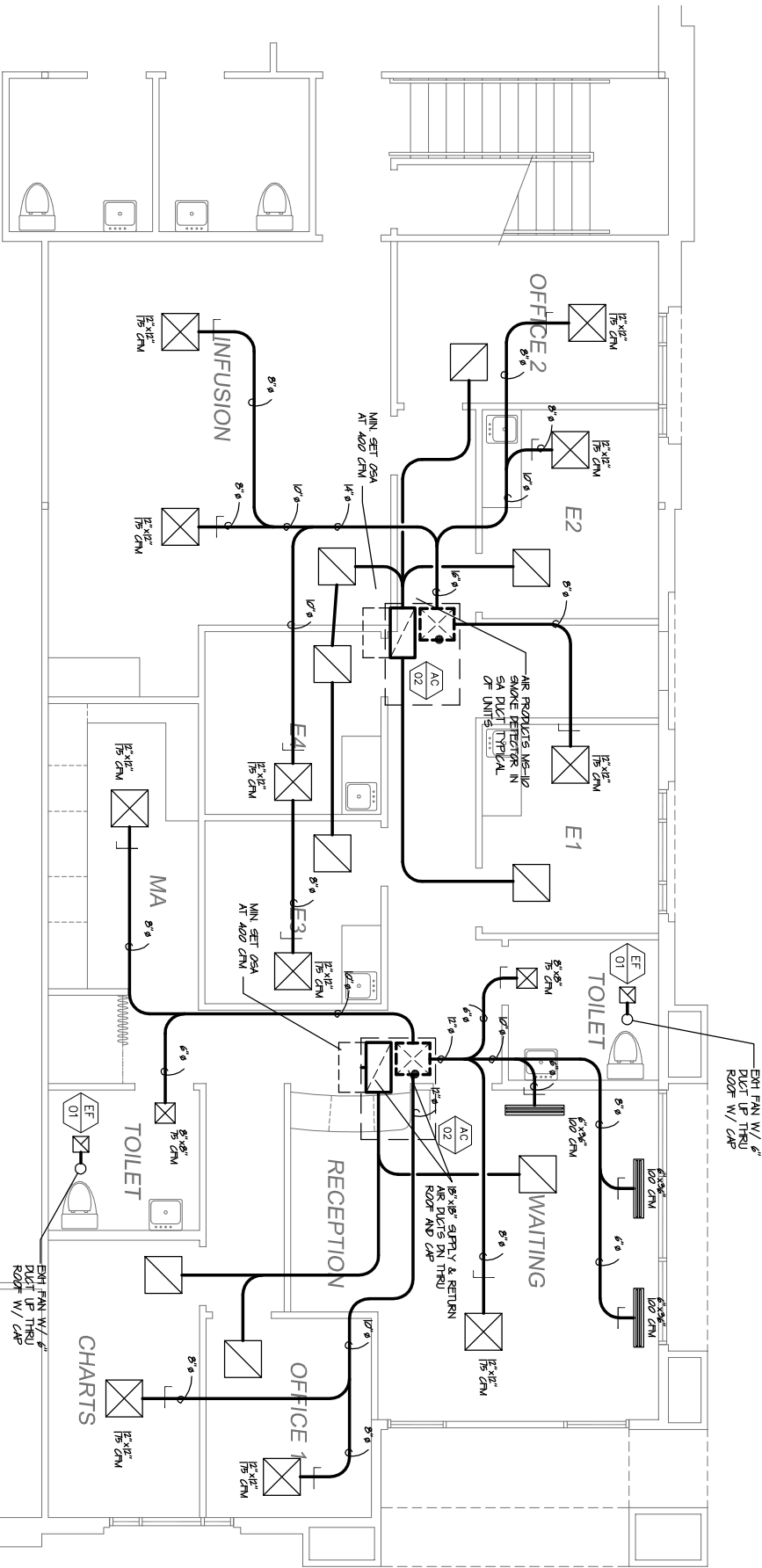
AIR FLOW SHEET

DUCT SIZE	FLOW
6"ø	1200 CFM
8"ø	1600 CFM
10ø	200 CFM
12"ø	400 CFM
14"ø	600 CFM
16ø	800 CFM
18"ø	1000 CFM
20"ø	1600 CFM

AIR FLOW TYP. UNIT

SA	RA	OSA
1200 CFM	1600 CFM	400 CFM

PROVIDE METALLIC COND DRAIN TO AN APPROVED PLUMBING FUTURE OR APPROVED DEDICATED AREA 3/4 MIN. TRAPPED DRAIN FOR AIR COOLING COILS



ENGINEER STAMP

REVISIONS

PROJECT

MEDICAL OFFICE FOR
For DR. SUMEET BHINDER
3933 COFFEE RD. BAKERSFIELD, CA.

DRAWN	RSF
CHECKED	RSF
DATE	6/29/2010
SCALE	1/4"=1'-0"
PROJECT NO.	08-124R
SHEET	

M1

SHEET#

1 HVAC PLAN
1/4" = 1'-0"